

THIS MAP WAS PREPARED FOR ASSESSMENT PURPOSE ONLY.

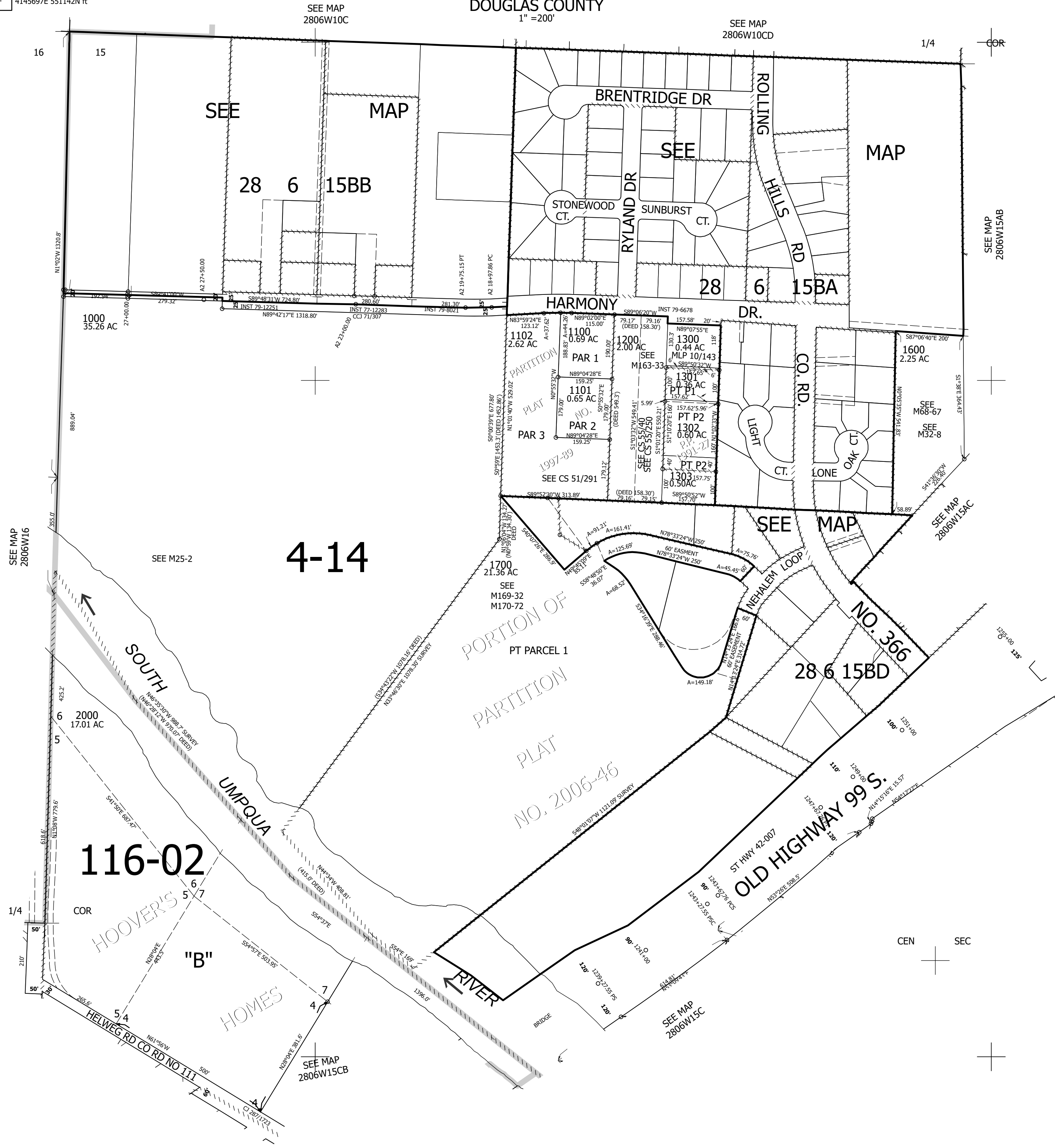
Upper Left:
123°24'24"W 43°8'31"N
4145697E 551142N ft

NW1/4 SEC.15 T.28S. R.06W. W.M.
DOUGLAS COUNTY
1" = 200'

Date Exported 2023-08-15

280615B
& INDEX

CANCELLED NOS:
201 202 203
204 205 206
207 208 209
210 211 212
213 100 200
1501 1502 1503
1400 1500 1304
1701 THRU 1713
1800 THRU 1806
1900 1305 1306
300 THRU 900



SEE MAP 2806W16

SEE MAP 2806W10C

SEE MAP 2806W10CD

SEE MAP 2806W15AB

SEE MAP 2806W15AC

SEE MAP 2806W15C

SEE MAP 2806W15CB

116-02

4-14

HOOVER'S "B"

HOMES

PORTION OF PARTITION PLAT NO. 2006-46

ST HWY 42-007
OLD HIGHWAY 99 S.

280615B
& INDEX

Lower Right:
123°23'29"W 43°7'58"N
4149622E 547665N ft