

THIS MAP WAS PREPARED FOR ASSESSMENT PURPOSE ONLY.

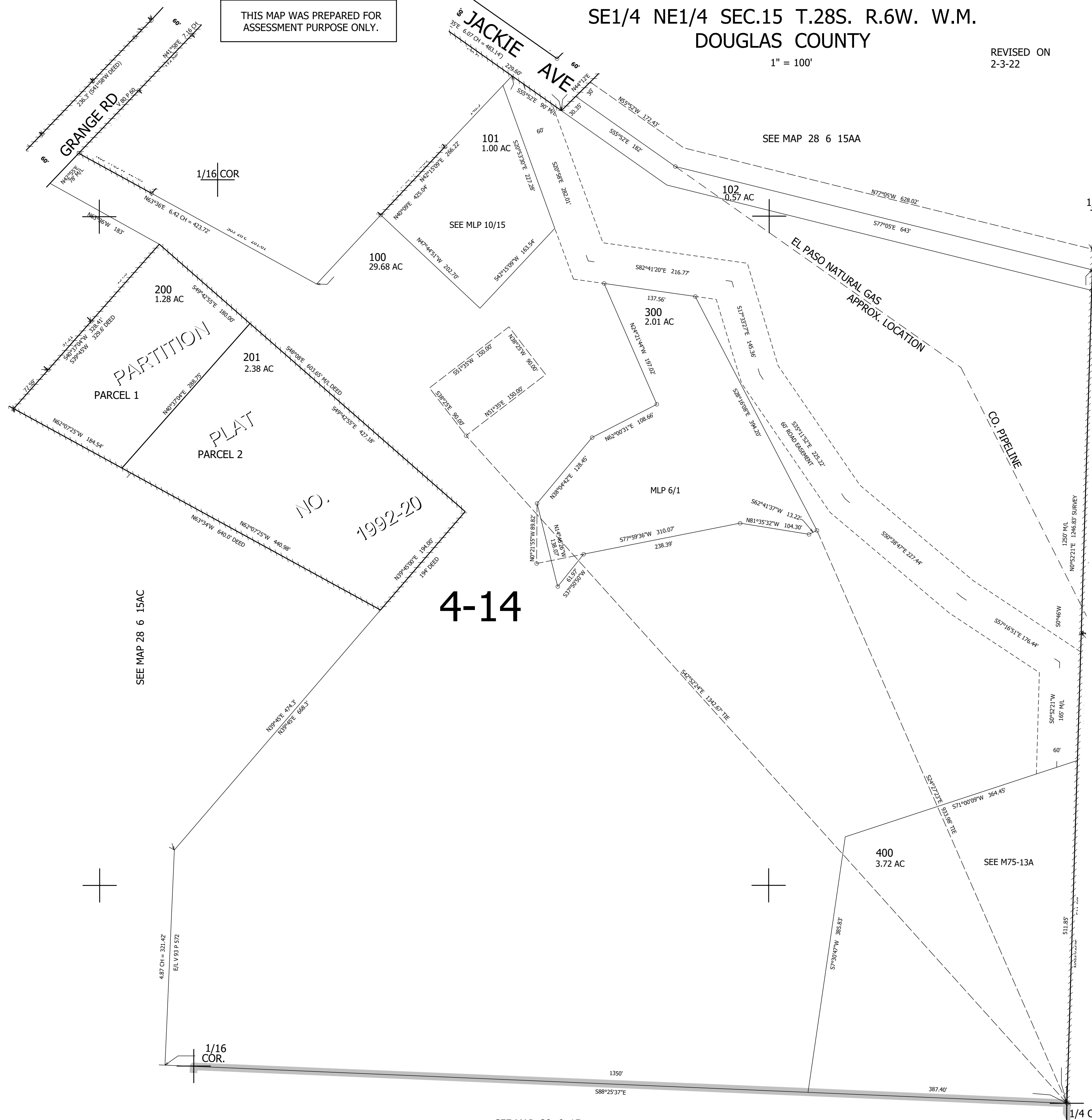
SE1/4 NE1/4 SEC.15 T.28S. R.6W. W.M. DOUGLAS COUNTY

1" = 100'

REVISED ON 2-3-22

28 6 15AD

CANCELLED NO'S



4-14

PARTITION PLAT NO. 1992-20

EL PASO NATURAL GAS APPROX. LOCATION

CO. PIPELINE

SEE MAP 28 6 15AC

SEE MAP 28 6 14BC

SEE M75-13A

SEE MAP 28 6 15

548,500

28 6 15AD

4,150,000