

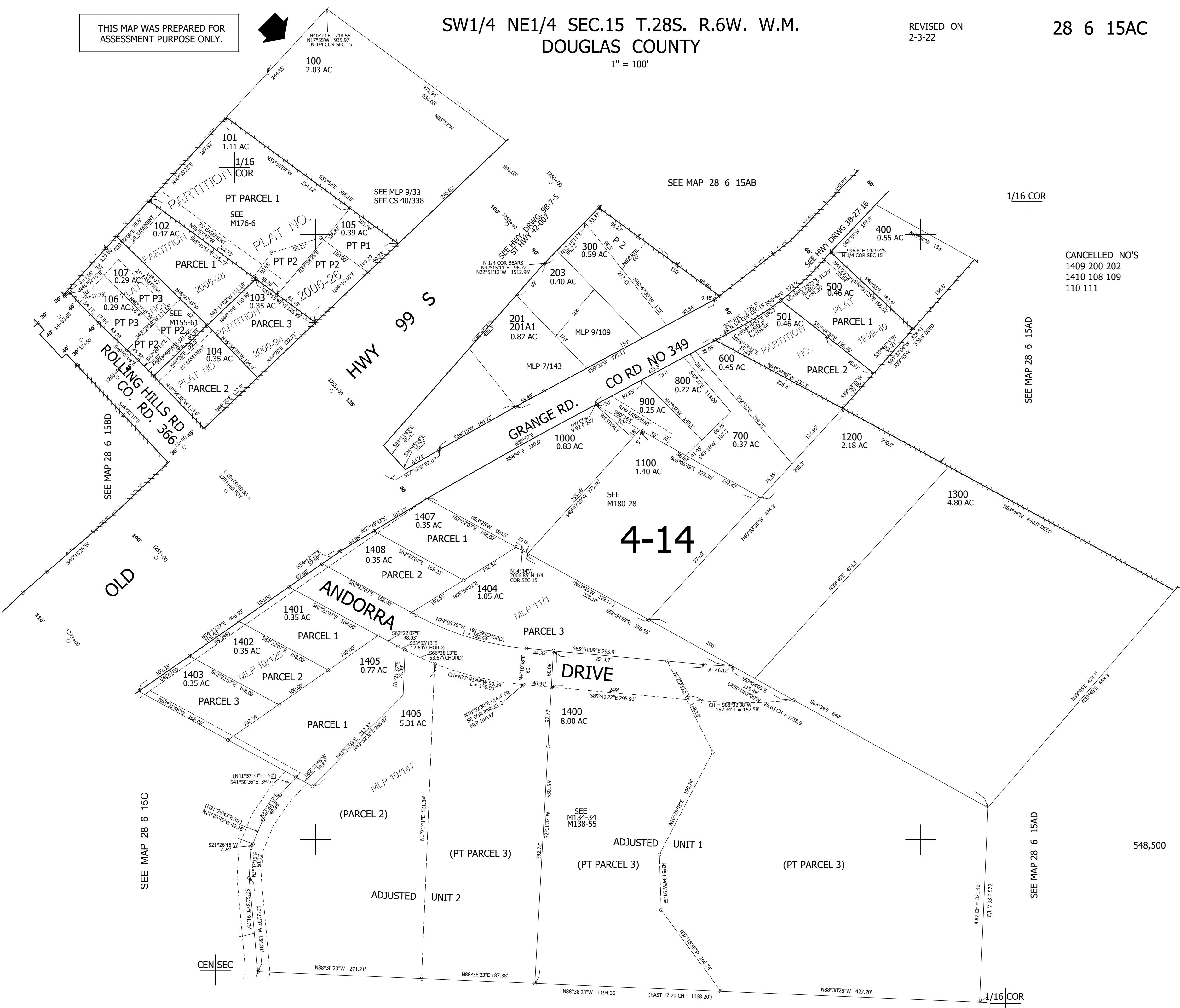
THIS MAP WAS PREPARED FOR ASSESSMENT PURPOSE ONLY.

SW1/4 NE1/4 SEC.15 T.28S. R.6W. W.M. DOUGLAS COUNTY

REVISED ON 2-3-22

28 6 15AC

1" = 100'



1/16 COR

CANCELLED NO'S
1409 200 202
1410 108 109
110 111

SEE MAP 28 6 15AD

4-14

548,500

SEE MAP 28 6 15AD

1/16 COR

SEE MAP 28 6 15

4,150,000

28 6 15AC