

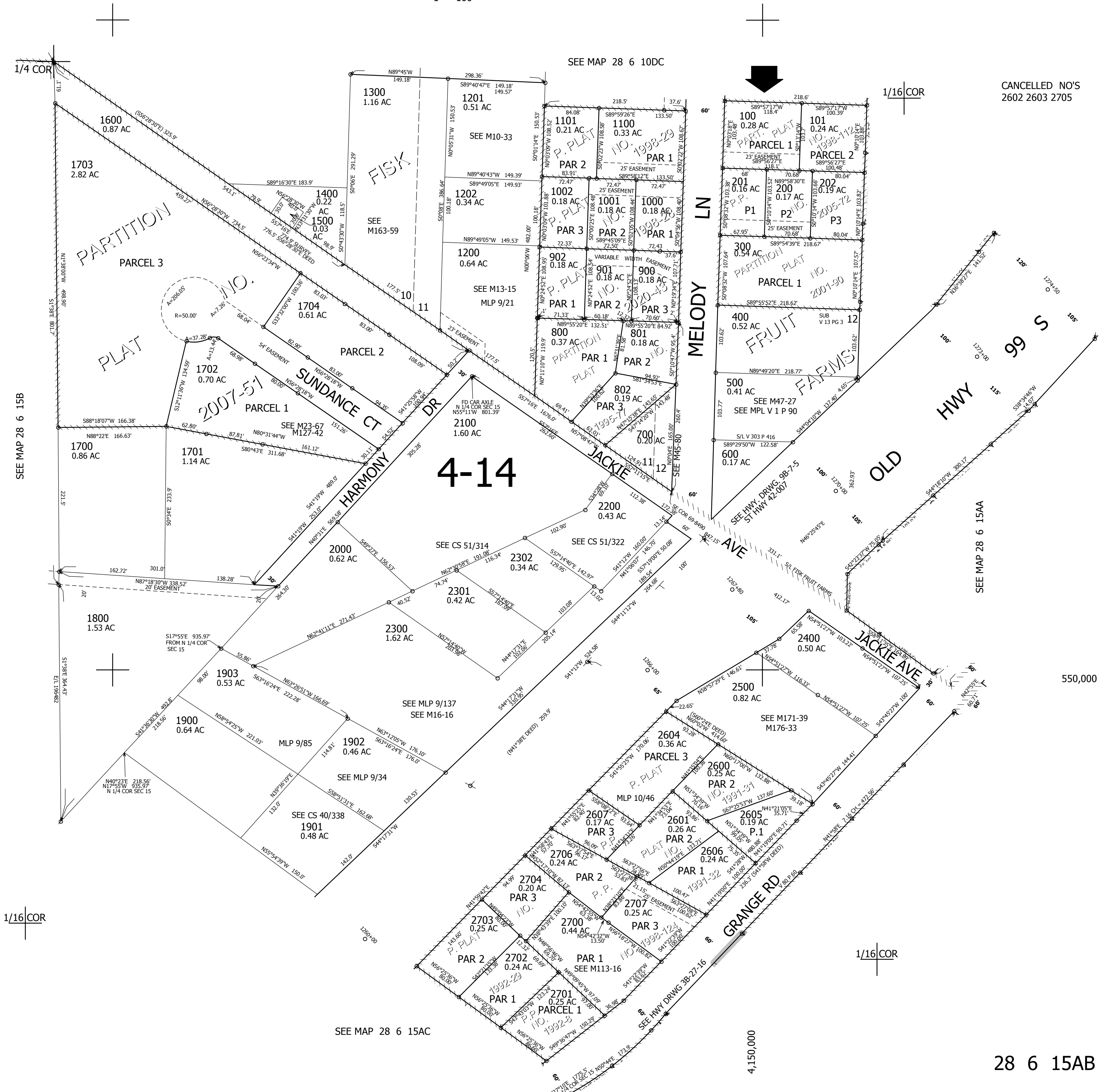
THIS MAP WAS PREPARED FOR ASSESSMENT PURPOSE ONLY.

NW1/4 NE1/4 SEC.15 T.28S. R.6W. W.M. DOUGLAS COUNTY

1" = 100'

REVISED ON
11-24-20

28 6 15AB



CANCELLED NO'S
2602 2603 2705

550,000

4,150,000

28 6 15AB