

THIS MAP WAS PREPARED FOR ASSESSMENT PURPOSE ONLY.

Upper Left:  
123°23'30"W 43°8'32"N  
4149719E 551095N ft

NE1/4 NE1/4 SEC.15 T.28S. R.06W. W.M.  
DOUGLAS COUNTY

Date Exported 2025-08-11

280615AA

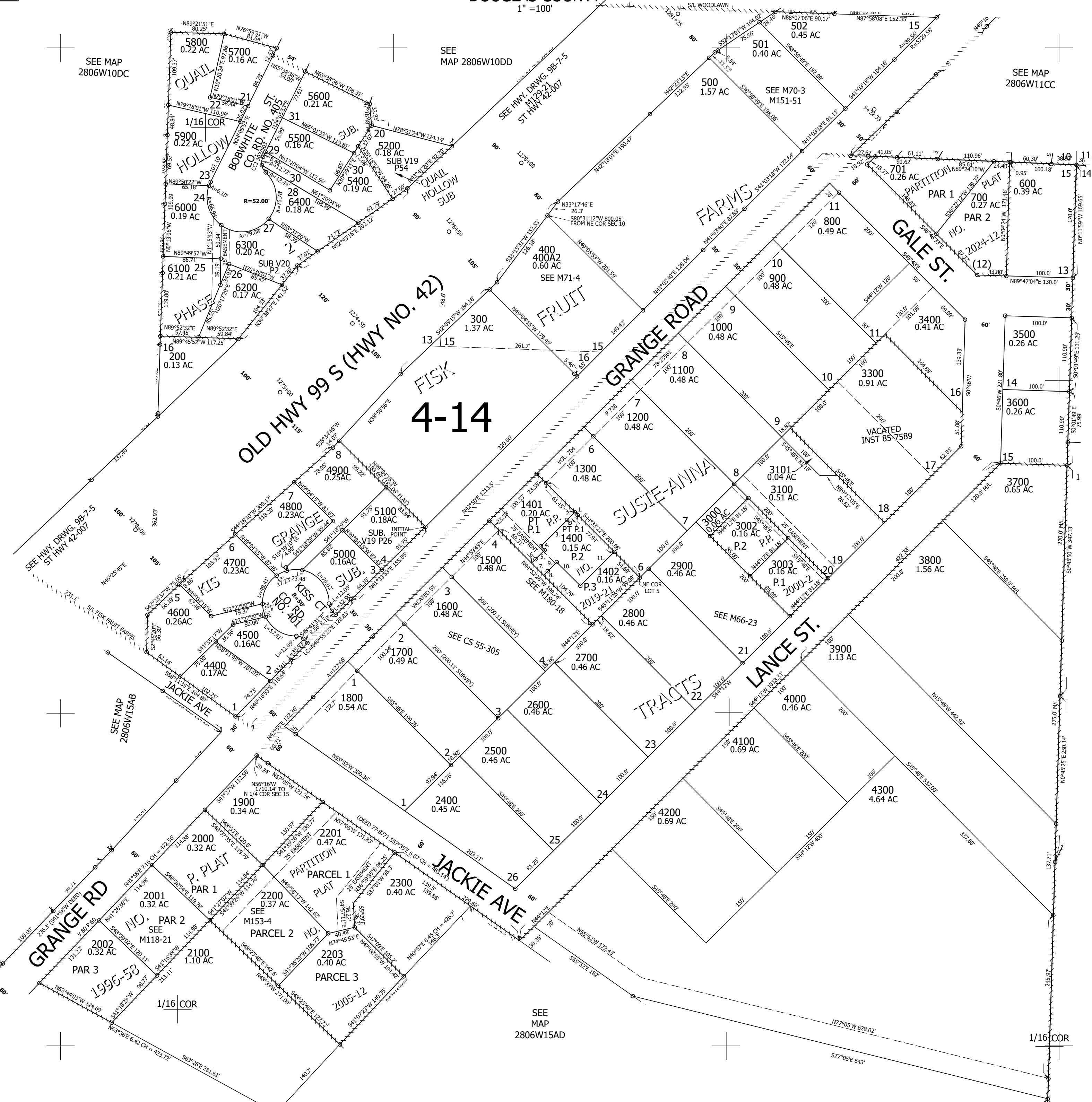
- PARCEL 1400
1. N44°33'22"W 6.00'
  2. S45°11'26"W 16.73'
  3. S45°11'26"W 55.72'
  4. S44°49'31"E 8.20'
  5. S45°11'26"W 19.40'
  6. S45°11'26"W 8.00'
  7. S44°52'26"E 25.64'
  8. N45°11'26"E 8.00'
  9. N45°11'26"E 19.38'
  10. S44°49'31"E 50.10'
  11. N45°11'26"E 72.06'

SEE MAP 2806W10CD

SEE MAP 2806W10DD

SEE MAP 2806W11CC

CANCELLED NOS:  
3200 301 101  
100 5300 3001  
400A1 500A1 502A1  
2202 1403



SEE MAP 2806W14BB

SEE MAP 2806W15AD

280615AA

Lower Right:  
123°23'22"W 43°8'16"N  
4151696E 549374N ft