

THIS MAP WAS PREPARED FOR ASSESSMENT PURPOSE ONLY.

SW1/4 NW1/4 SEC.14 T.28S. R.6W. W.M. DOUGLAS COUNTY

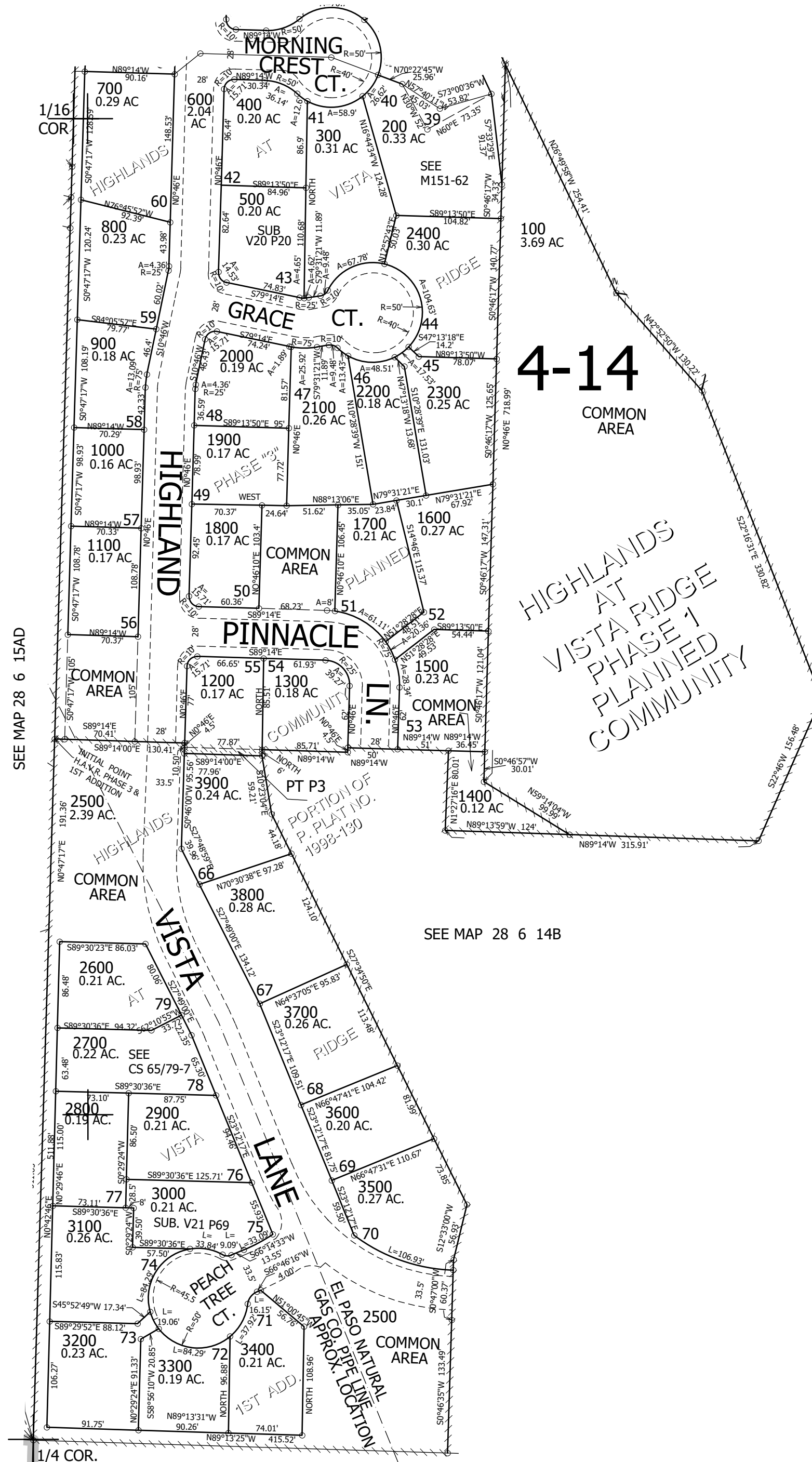
REVISED ON 2-3-22

28 6 14BC

SEE MAP 28 6 14BB

1" = 100'

CANCELLED NO'S

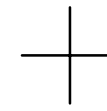


SEE MAP 28 6 15AD

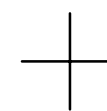
SEE MAP 28 6 14B

SEE MAP 28 6 14B

SEE MAP 28 6 14B



1/16 COR



548,500

1/16 COR

28 6 14BC

4,152,500