

THIS MAP WAS PREPARED FOR ASSESSMENT PURPOSE ONLY.

Upper Left:
123°23'13"W 43°8'33"N
4150924E 551155N ft

NW1/4 SEC.14 T.28S. R.06W. W.M.
DOUGLAS COUNTY
1" = 200'

Date Exported 2026-05-12

CANCELLED NOS:
1900 100 103
504 502 503
501 2900 505
506 1101 201
202 1201 1102

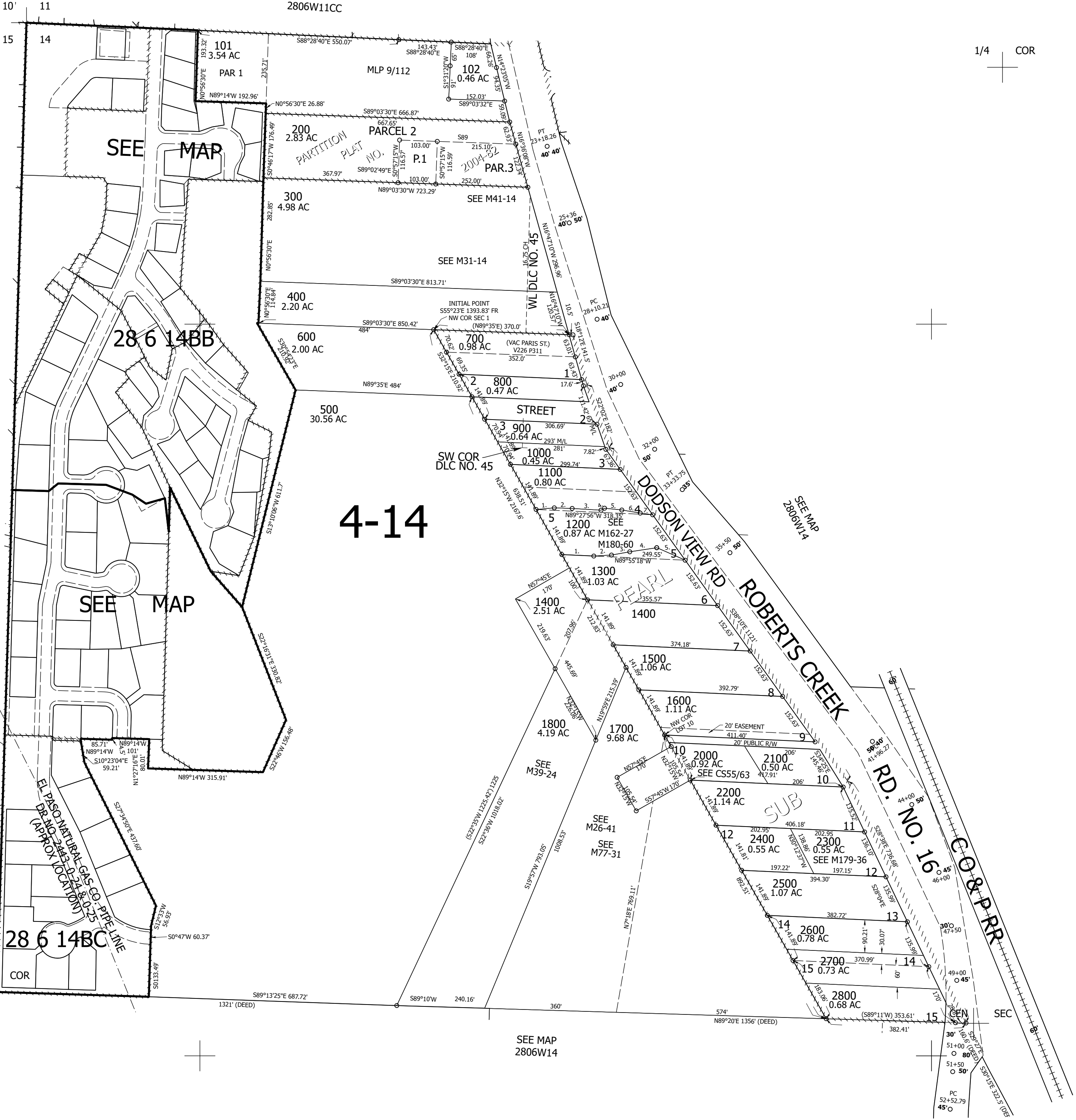
PARCEL 1300
1. S89°55'18"E 87.54'
2. N84°16'28"E 48.40'
3. N77°22'10"E 50.76'
4. N78°47'40"E 74.61'
5. S68°38'21"E 84.47'

PARCEL 1200
1. N83°12'25"E 49.85'
2. N89°40'08"E 48.95'
3. S88°35'15"E 78.95'
4. N58°18'15"E 11.18'
5. S86°09'47"E 47.46'
6. S82°40'21"E 51.53'
7. S84°14'06"E 33.15'

SEE MAP 2806W15AA

SEE MAP 2806W15AD

1/4 COR



10' 11
15 14

SEE MAP 2806W11CC

1/4 COR

4-14

28 6 14BB

28 6 14BC

1/4 COR

SEE MAP 2806W14

EL PASO NATURAL GAS CO. PIPE LINE
DR. NO. 2-483-0-2248-0-25
(APPROX LOCATION)

1/4 COR

Lower Right:
123°22'19"W 43°7'59"N
4154850E 547555N ft