

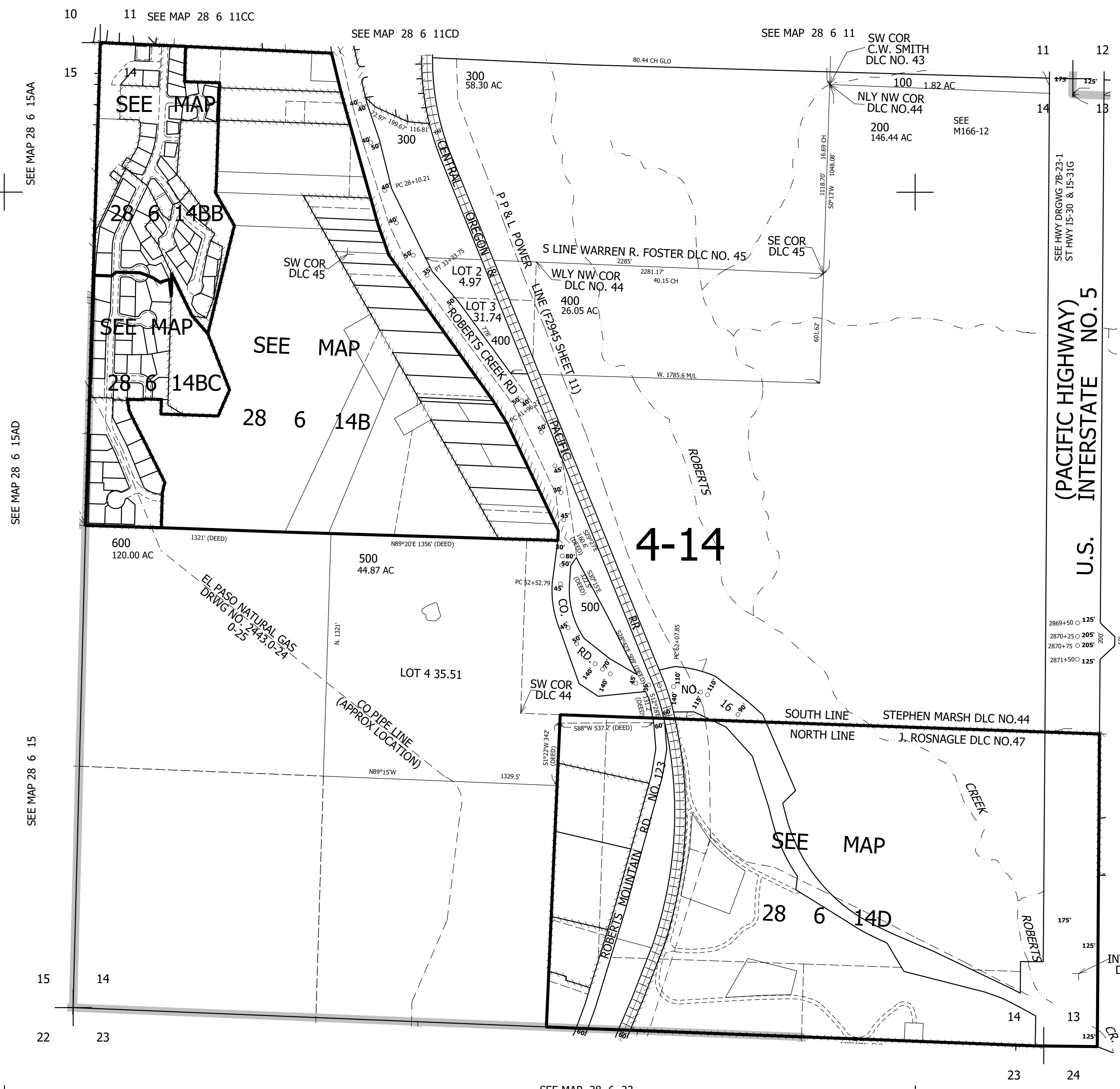
THIS MAP WAS PREPARED FOR ASSESSMENT PURPOSE ONLY.

SEC.14 T.28S. R.6W. W.M. DOUGLAS COUNTY

1" = 400'

REVISED ON 2-3-22

28 6 14 & INDEX



CANCELLED NO'S

550,000

SEE MAP 28 6 13

SEE MAP 28 6 13C

28 6 14 & INDEX

4,156,000