

THIS MAP WAS PREPARED FOR ASSESSMENT PURPOSE ONLY.

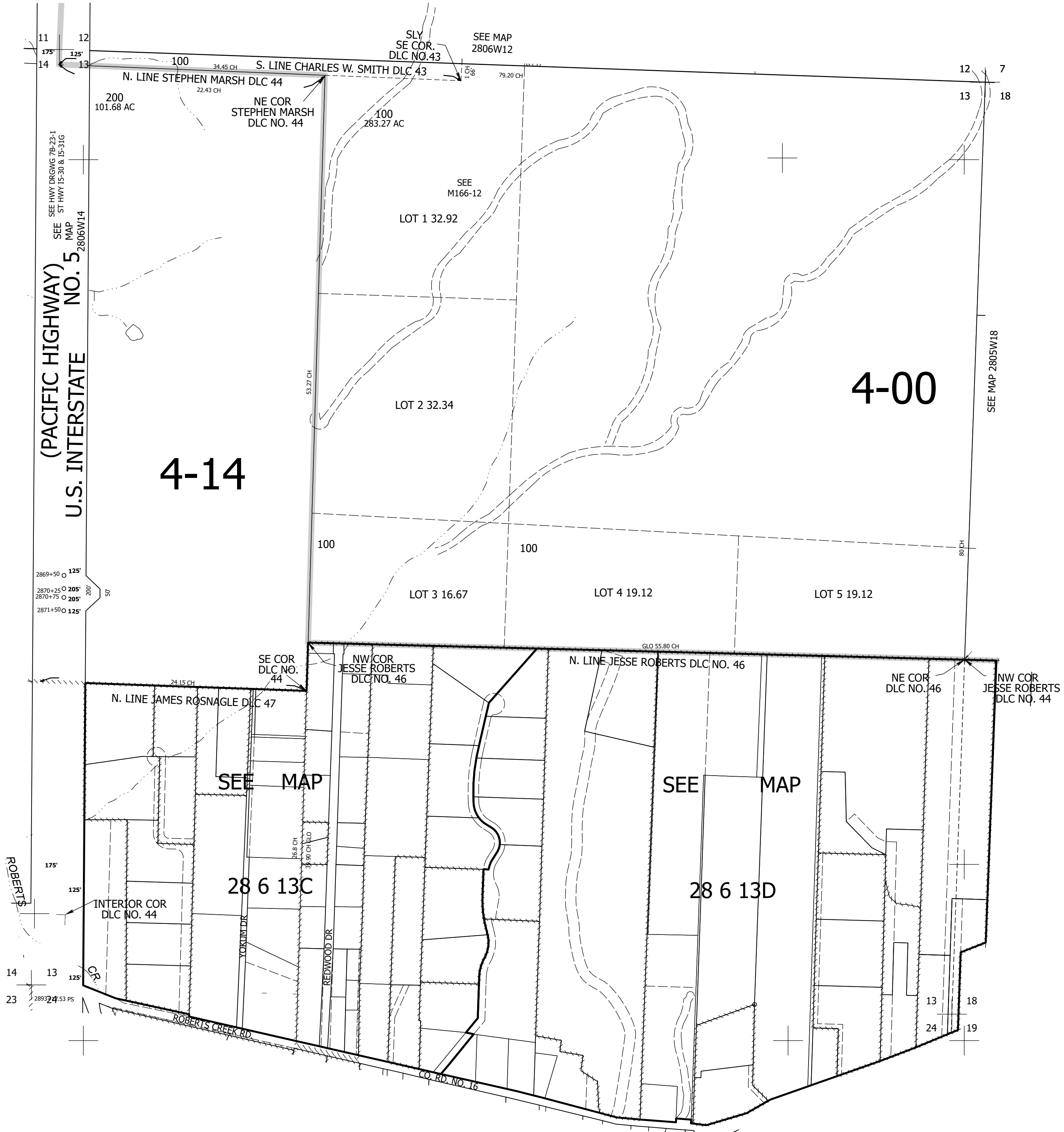
Upper Left:
123°22'10"W 43°8'35"N
4155624E 551149N ft

SEC.13 T.28S. R.06W. W.M.
DOUGLAS COUNTY
1" = 400'

Date Exported 2024-07-02

280613
& INDEX

CANCELLED NOS:



280613
& INDEX

Lower Right:
123°20'21"W 43°7'29"N
4163473E 544194N ft