

THIS MAP WAS PREPARED FOR ASSESSMENT PURPOSE ONLY.

1/16 COR

SE1/4 SW1/4 SEC.11 T.28S. R.6W. W.M. DOUGLAS COUNTY

SEE MAP 28 6 11C

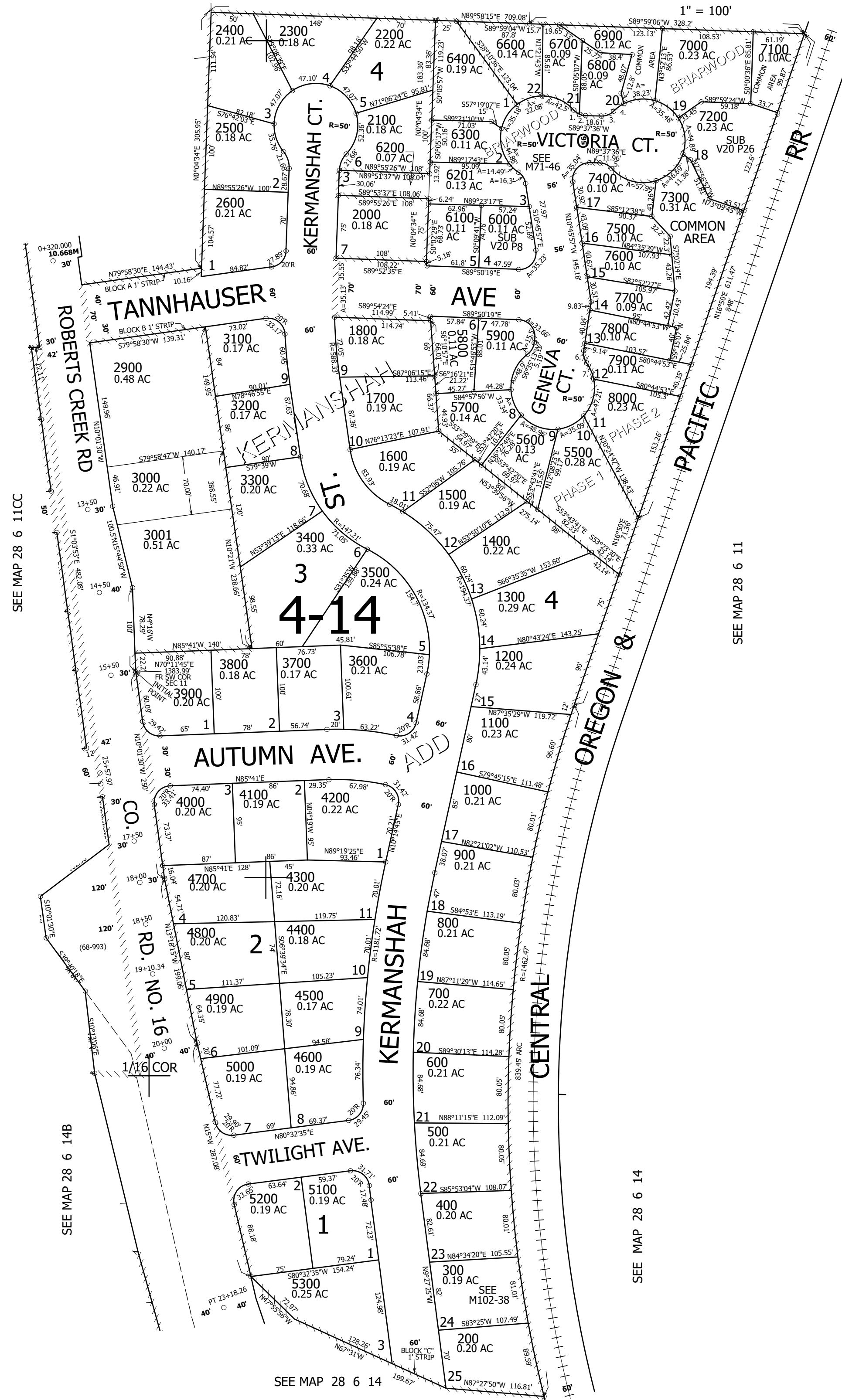
1" = 100'

REVISED ON 2-3-22

28 6 11CD

1/16 COR

CANCELLED NO'S 100 1900 6500 2700 2800 5400



BRIARWOOD PHASE 2

1. A=8.6' R=20'
LC=S55°58'44"E 8.53'
2. A=7.71' R=20'
LC=S79°19'58"E 7.66'
3. A=16.3' R=20'
LC=N66°16'21"E 15.86'
4. A=15.32' R=50'
LC=N51°41'53"E 15.26'
5. A=16.3' R=20'
LC=N67°01'10"W 15.86'
6. A=15.5' R=20'
LC=S15°37'15"E 15.12'
7. A=21.09' R=50'
LC=S25°44'39"E 20.94'

551,000

1/4 COR

4,154,000

28 6 11CD

SEE MAP 28 6 14

SEE MAP 28 6 14

SEE MAP 28 6 11CC

SEE MAP 28 6 11

SEE MAP 28 6 14B