

THIS MAP WAS PREPARED FOR ASSESSMENT PURPOSE ONLY.

Upper Left:
123°23'15"W 43°8'59"N
4150926E 553800N ft

SW1/4 SEC.11 T.28S. R.06W. W.M.
DOUGLAS COUNTY
1" = 200'

Date Exported 2025-09-16

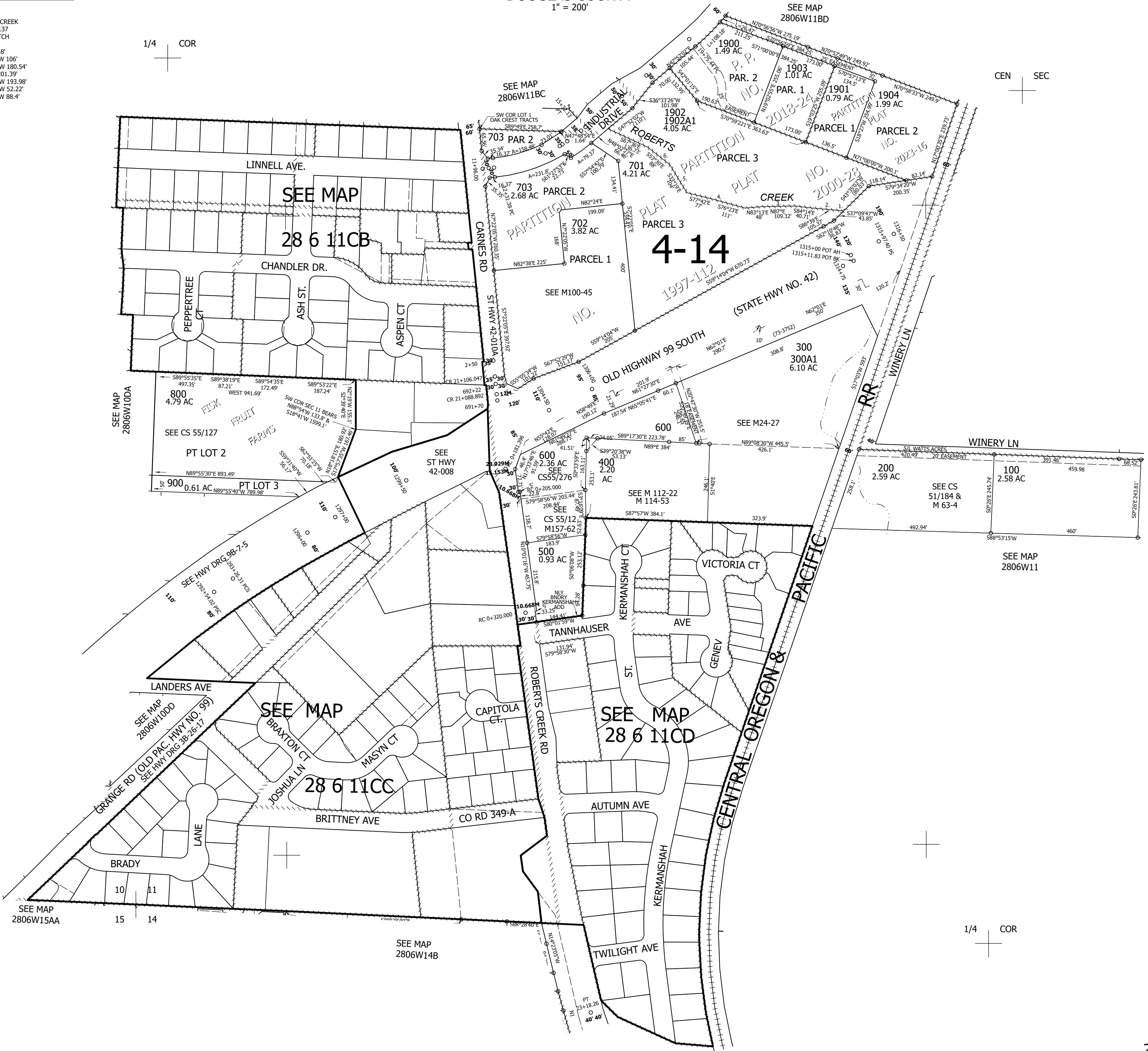
280611C
& INDEX

- PP 2000-28
- C/L ROBERTS CREEK
- PER PP 1998-137
- (DOESN'T MATCH
- PP 1997-112)
- 1. S79°W 38.48'
- 2. S87°13'49"W 106'
- 3. N89°39'32"W 180.54'
- 4. N82°55'W 201.39'
- 5. N38°03'04"W 193.98'
- 6. N53°40'27"W 52.22'
- 7. N85°45'32"W 88.4'

1/4 COR

CEN SEC

- CANCELLED NOS:
- 1500 1304 1702
- 1801 1301 700
- 1101 1300 1099
- 1302 1100 1303
- 1102 1400 401
- 1600 1700 1701
- 1703 1800 1000
- 1002 1001 1200
- 1201 1202 603
- 501 1901A1



1/4 COR

280611C
& INDEX

Lower Right:
123°22'20"W 43°8'25"N
4154853E 550200N ft