

THIS MAP WAS PREPARED FOR ASSESSMENT PURPOSE ONLY.

Upper Left:
123°22'50"W 43°9'13"N
4152765E 555088N ft

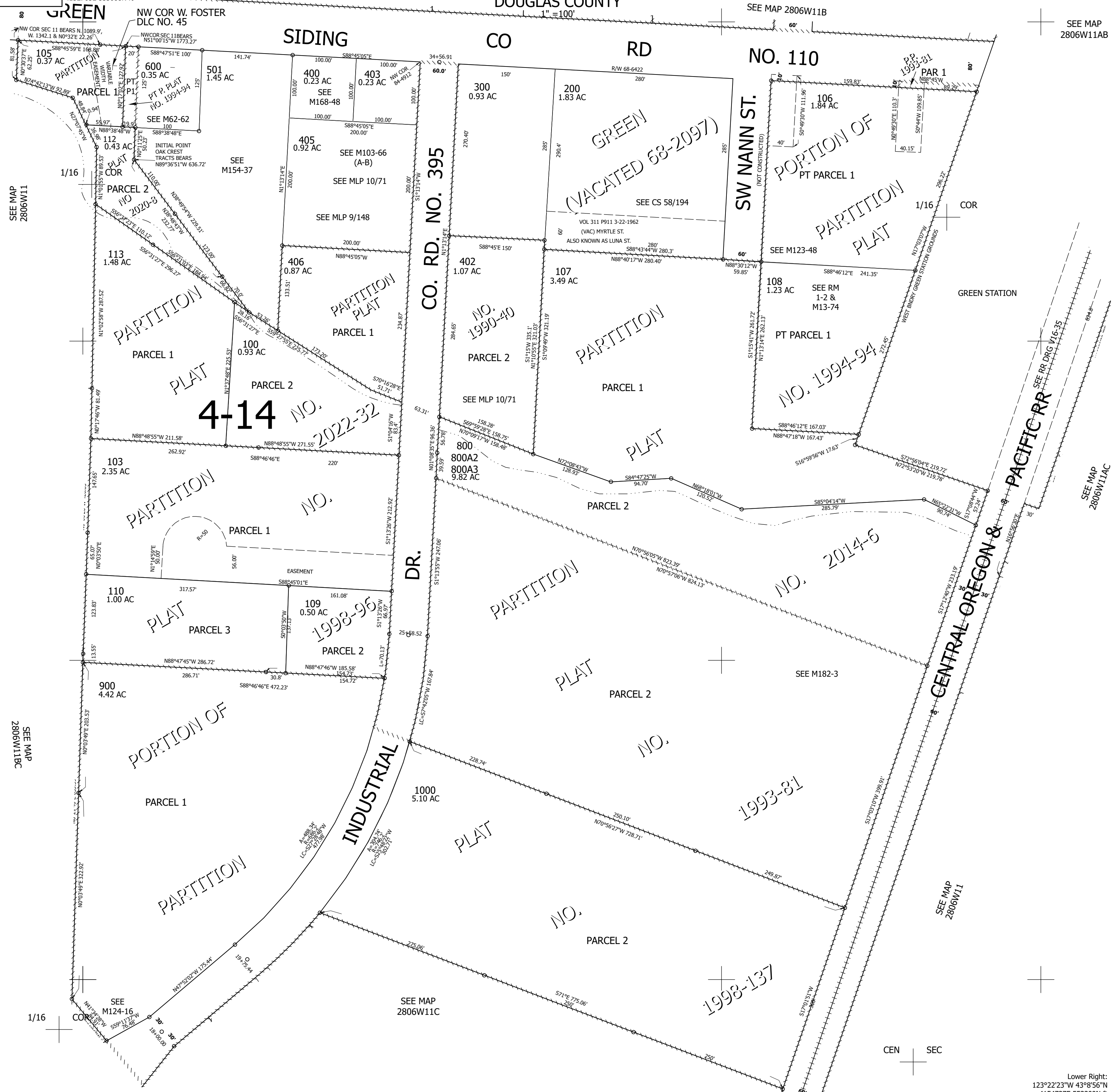
SE1/4 NW1/4 SEC.11 T.28S. R.06W. W.M.
DOUGLAS COUNTY

Date Exported 2024-03-27

280611BD

SEE MAP
2806W11AB

CANCELLED NOS:
700 102 104
404 401 500
101 800A1 111



SEE MAP
2806W11

SEE MAP
2806W11BC

CO. RD. NO. 395

DR.

CENTRAL OREGON & PACIFIC RR

SEE MAP
2806W11AC

SEE MAP
2806W11

SEE MAP
2806W11C

CEN SEC

280611BD

Lower Right:
123°22'23"W 43°8'56"N
4154727E 553309N ft