

THIS MAP WAS PREPARED FOR ASSESSMENT PURPOSE ONLY.

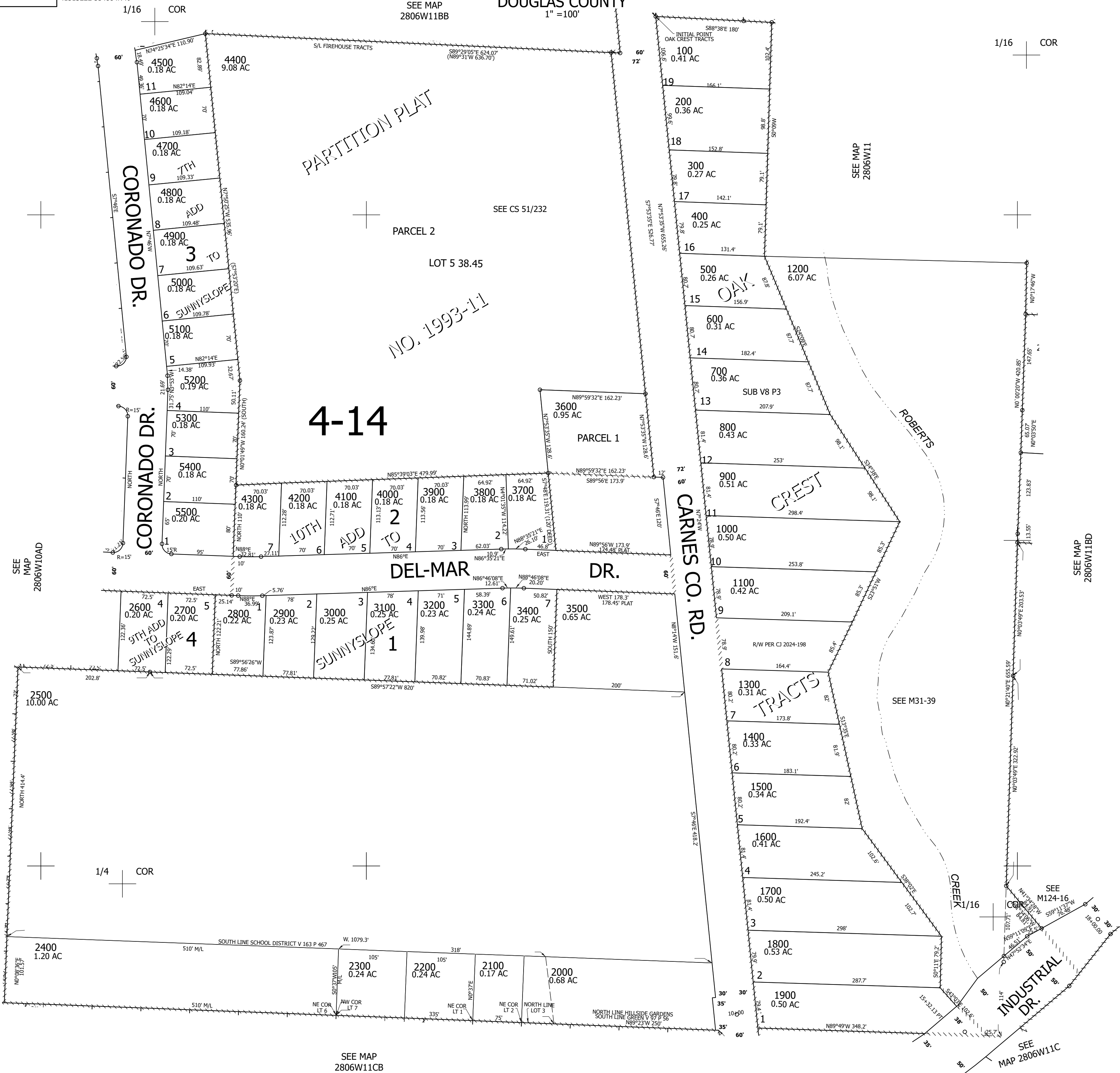
Upper Left:
123°23'10"W 43°9'10"N
4151322E 554884N ft

SW1/4 NW1/4 SEC.11 T.28S. R.06W. W.M.
DOUGLAS COUNTY
1" = 100'

Date Exported 2024-03-06

280611BC

CANCELLED NOS:
4402 1901 4401



1/16 COR

1/16 COR

1/4 COR

SEE MAP
2806W11CB

SEE MAP
2806W11

SEE MAP
2806W11BD

SEE
MAP 2806W11C

280611BC

Lower Right:
123°22'43"W 43°8'53"N
4153284E 553105N ft