

THIS MAP WAS PREPARED FOR ASSESSMENT PURPOSE ONLY.

Upper Left:
123°22'36"W 43°9'26"N
4153908E 556435N ft

NE1/4 SEC.11 T.28S. R.06W. W.M.
DOUGLAS COUNTY
1" = 200'

SEE MAP
2806W02DD

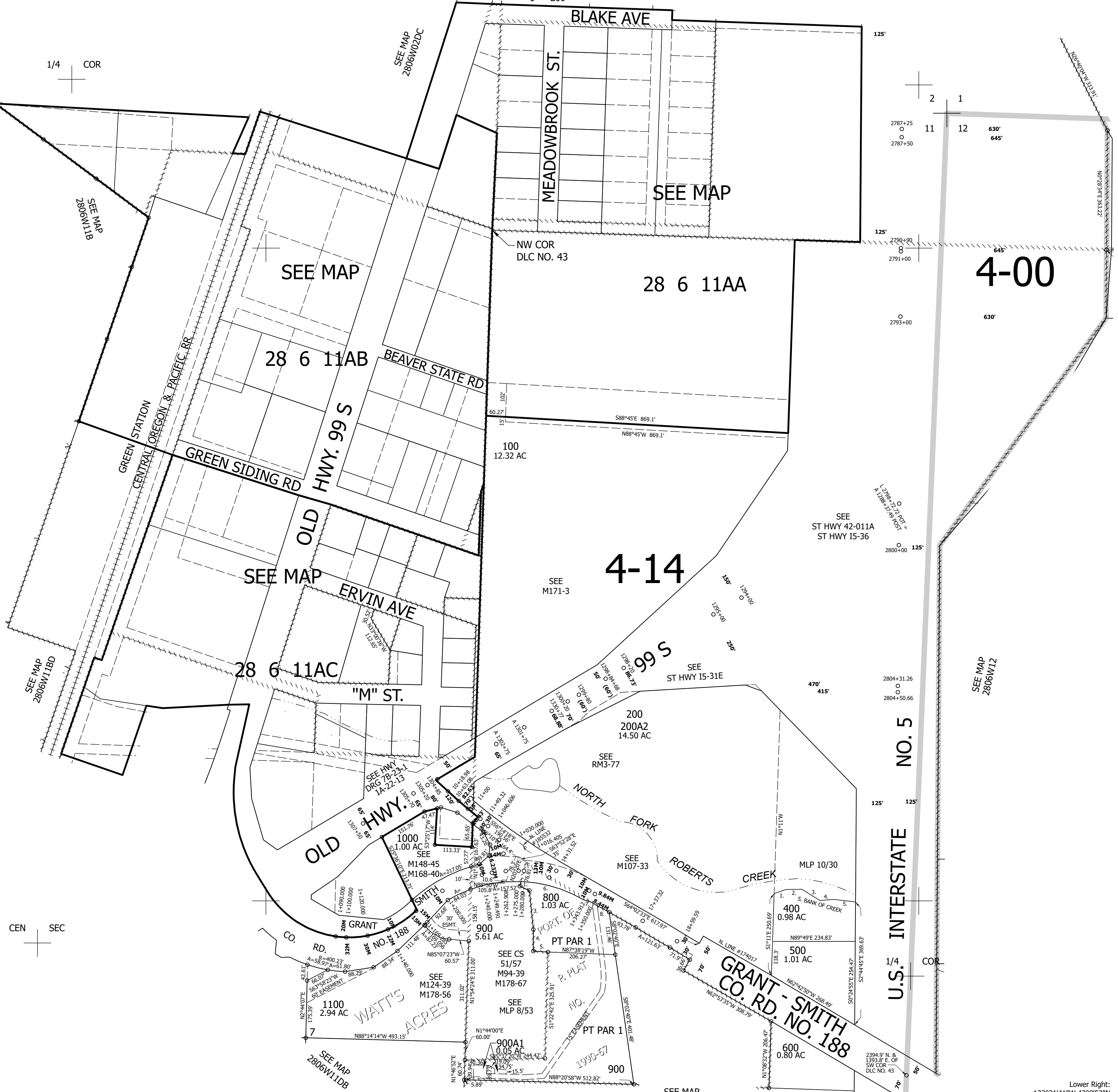
Date Exported 2026-04-09

PARCEL 400
1. N67°15'37"E 37.71'
2. N85°44'59"E 49.07'
3. S61°11'20"E 66.02'
4. N81°43'33"E 41.3'
5. S86°26'05"E 60.81'

PARCEL 800 & 900
1. N11°10'34"E 20.07'
2. N65°54'34"W 32.15'
3. N5°40'20"W 119.97'
4. N0°35'06"E 66.42'
5. N87°29'03"W 45.24'
6. LC=S73°15'30"E 193.53'
R=410.05' A=195.57'
7. S70°38'32"E 20.35'
8. S60°41'54"E 74.34'

1/4 COR

CANCELLED NOS:
200A1 1201 300
1101 1200 1001
1102 1103 1104
801 800A1 700



SEE MAP
2806W01C

4-00

4-14

NO. 5

INTERSTATE
U.S.

280611A

Lower Right:
123°21'41"W 43°8'52"N
4157834E 552835N ft