

THIS MAP WAS PREPARED FOR ASSESSMENT PURPOSE ONLY.

SE1/4 SE1/4 SEC.10 T.28S. R.6W. W.M. DOUGLAS COUNTY

REVISED ON 3-8-21

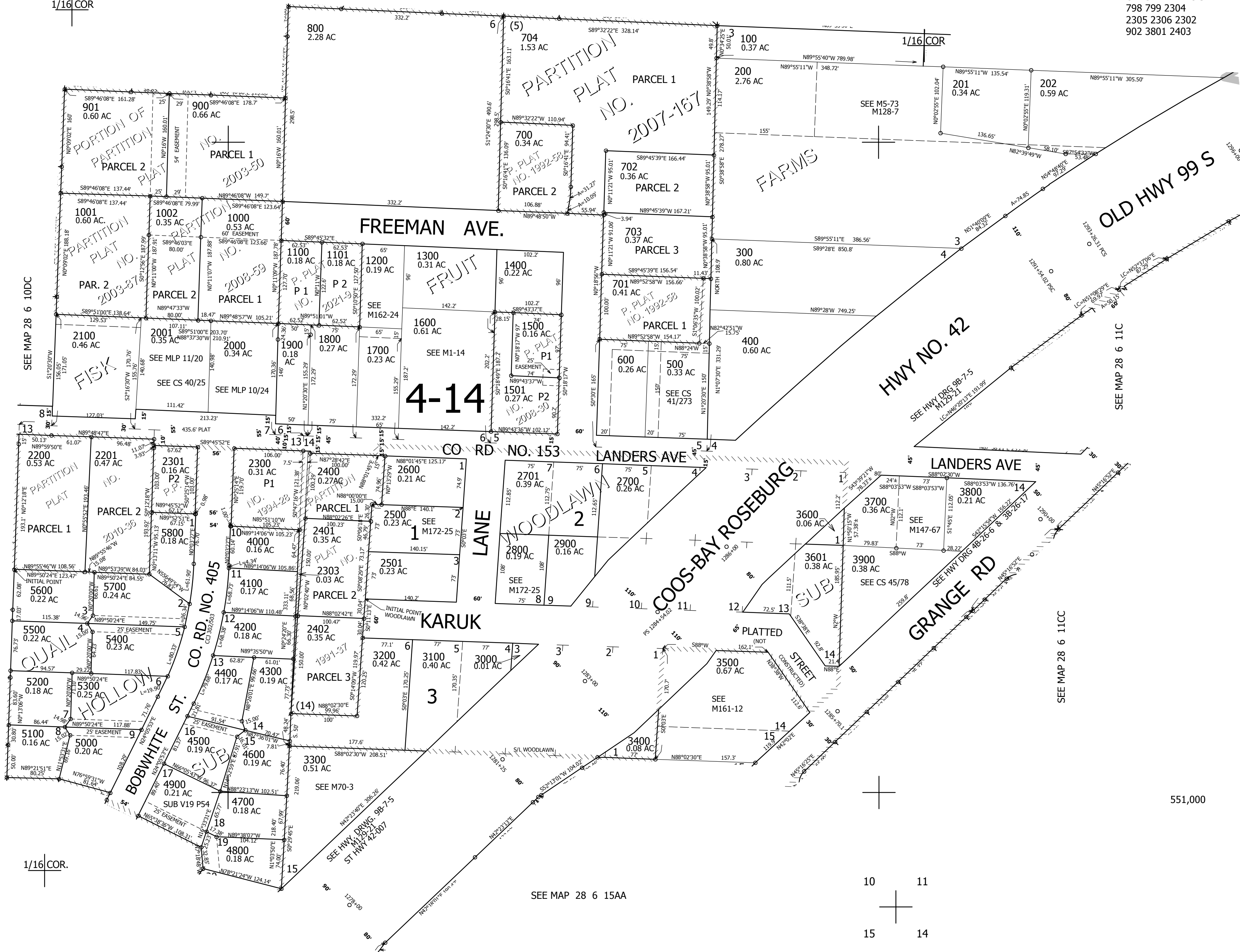
28 6 10DD

1" = 100'

SEE MAP 28 6 10DA

CANCELLED NO'S 798 799 2304 2305 2306 2302 902 3801 2403

1/16 COR



SEE MAP 28 6 15AA

10 11
15 14

4,151,500

551,000

28 6 10DD