

THIS MAP WAS PREPARED FOR ASSESSMENT PURPOSE ONLY.

Upper Left:
123°23'46"W 43°8'45"N
4148573E 552425N ft

SW1/4 SE1/4 SEC.10 T.28S. R.06W. W.M. DOUGLAS COUNTY

Date Exported 2023-11-28

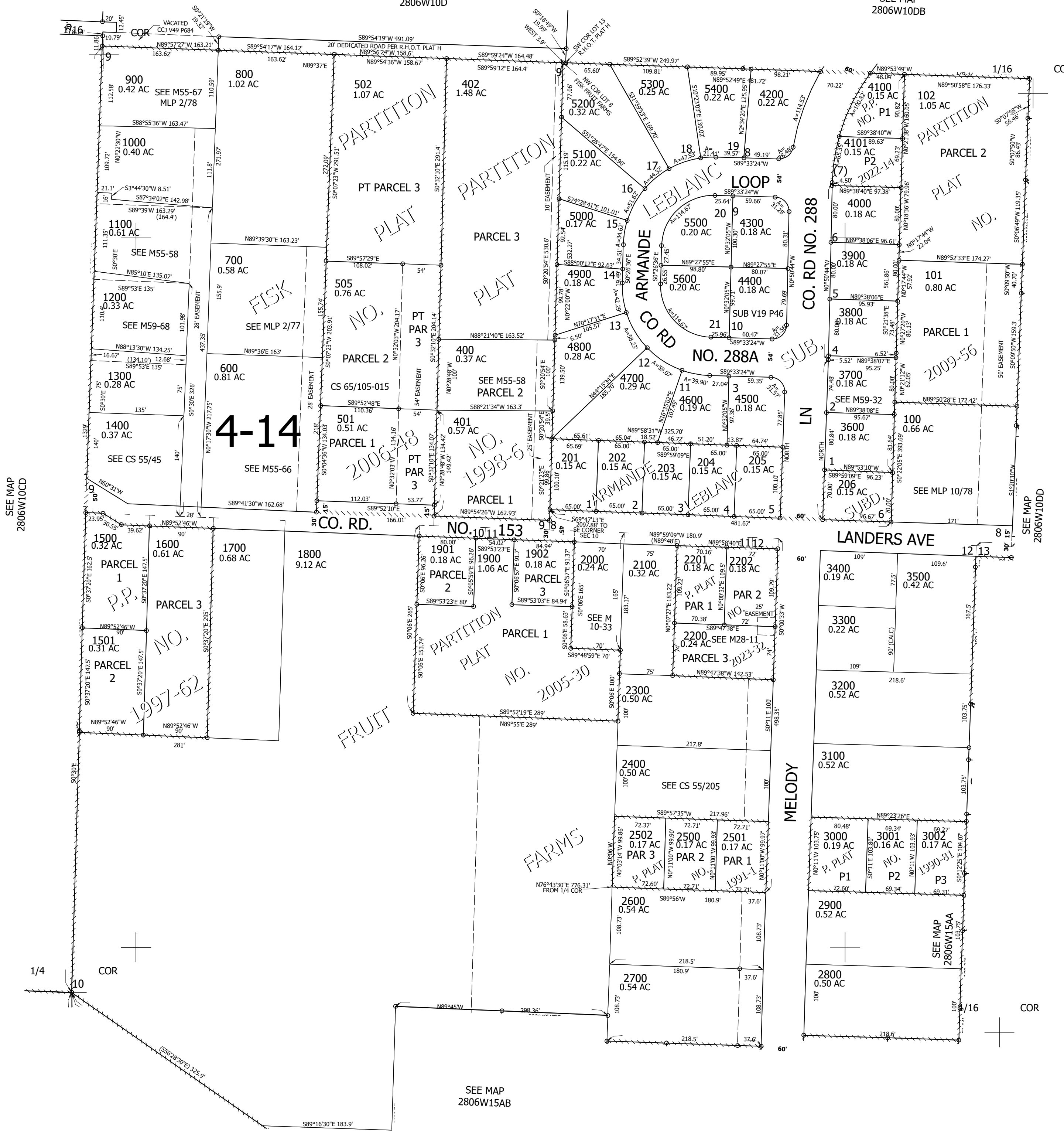
280610DC

SEE MAP
2806W10D

1" = 100'

SEE MAP
2806W10DB

CANCELLED NOS:
200 300 1001
207 503 504
500



SEE MAP
2806W10CD

SEE MAP
2806W10DD

SEE MAP
2806W15AB

SEE MAP
2806W15AA

280610DC

Lower Right:
123°23'18"W 43°8'28"N
4150535E 550646N ft