

THIS MAP WAS PREPARED FOR ASSESSMENT PURPOSE ONLY.

NW1/4 SE1/4 SEC.10 T.28S. R.6W. W.M.
DOUGLAS COUNTY
1" = 100'

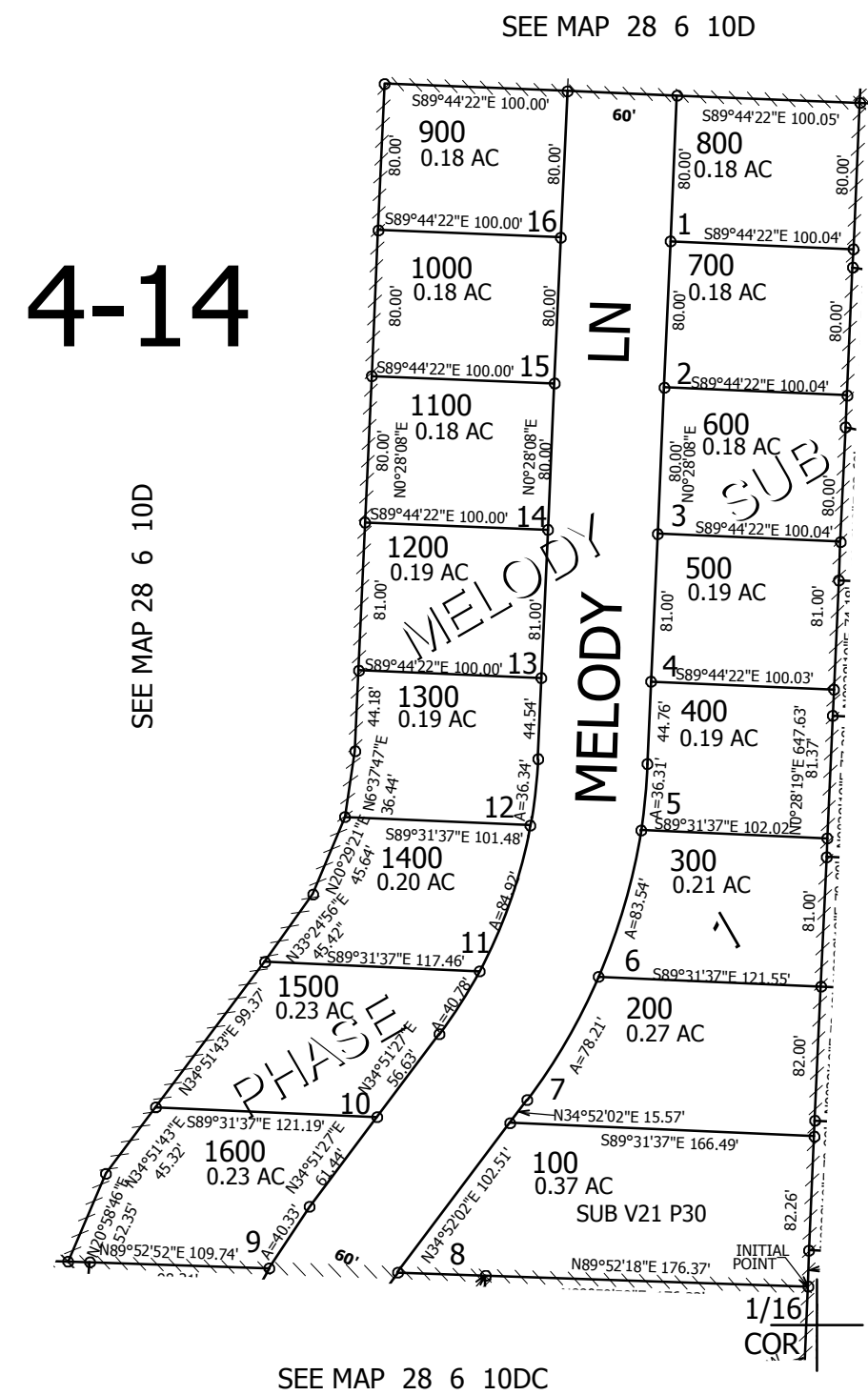
REVISED ON
12-6-11

28 6 10DB

CANCELLED NO'S

CEN|SEC

1/16|COR



1/16|COR

552,500

4,149,500

28 6 10DB