

THIS MAP WAS PREPARED FOR ASSESSMENT PURPOSE ONLY.

NE1/4 SE1/4 SEC.10 T.28S. R.6W. W.M.
DOUGLAS COUNTY
1" = 100'

REVISED ON
5-9-17

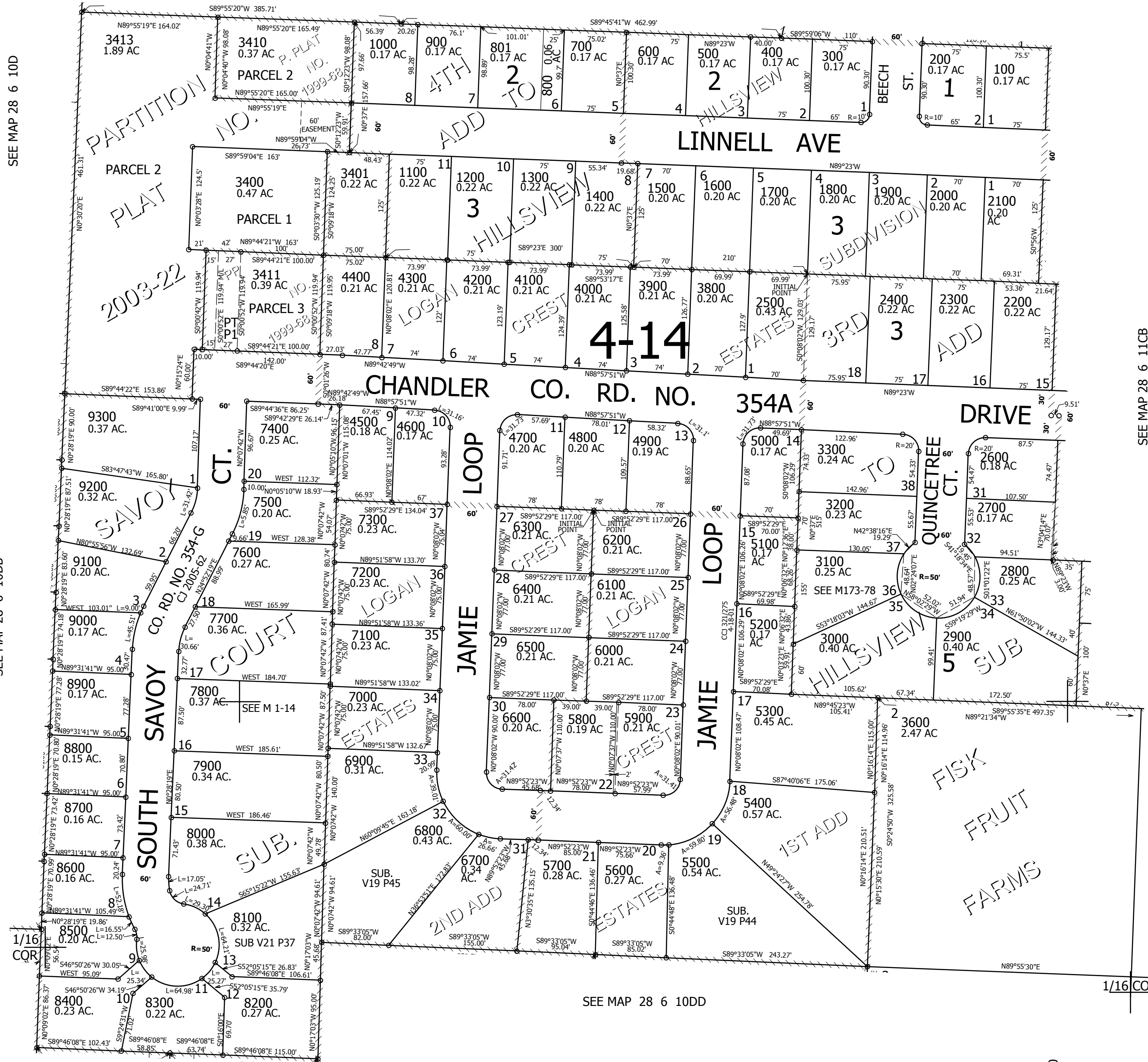
28 6 10DA

1/16 COR

1/4 COR

SEE MAP 28 6 10AD

CANCELLED NO'S
3403 3404 3405
3402 3406 3407
3408 3409 5801
3500 3415 2701
3412 3414 3700



SEE MAP 28 6 10D

SEE MAP 28 6 10DB

SEE MAP 28 6 11CB

SEE MAP 28 6 10DD

552,500

4,151,500

28 6 10DA