

THIS MAP WAS PREPARED FOR ASSESSMENT PURPOSE ONLY.

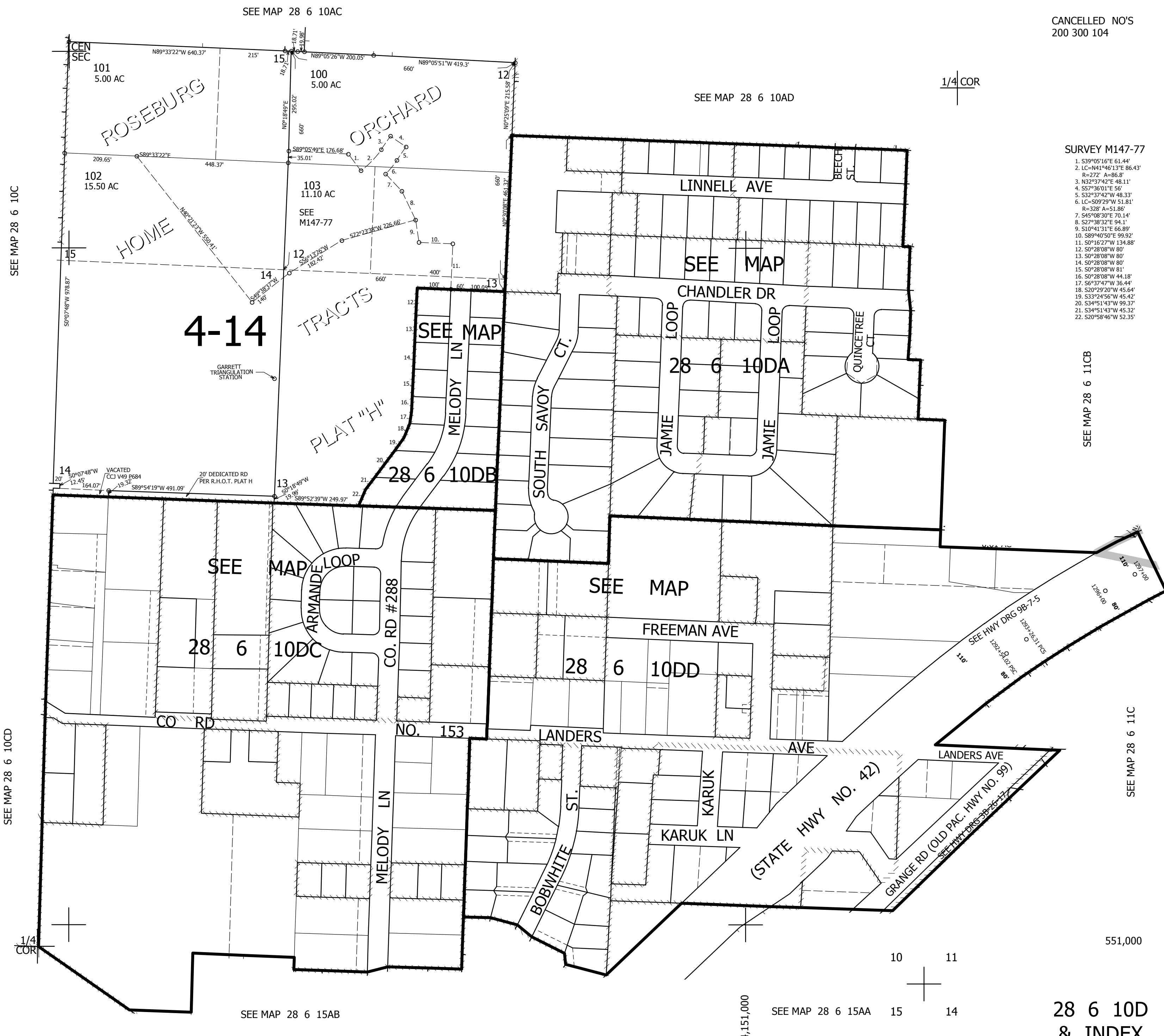
SE1/4 SEC.10 T.28S. R.6W. W.M.
DOUGLAS COUNTY

REVISED ON
2-26-14

28 6 10D
& INDEX

1" = 200'

CANCELLED NO'S
200 300 104



- SURVEY M147-77
1. S39°05'16"E 61.44'
 2. LC=N41°46'13"E 66.43'
 3. R=272' A=86.8°
 4. N32°37'42"E 48.11'
 5. S32°37'42"W 48.33'
 6. LC=S09°29'W 51.81'
 7. R=328' A=51.86°
 8. S45°08'30"E 70.14'
 9. S27°38'32"E 94.1'
 10. S10°41'31"E 66.89'
 11. S89°40'50"E 99.92'
 12. S0°38'08"W 80'
 13. S0°28'08"W 80'
 14. S0°28'08"W 80'
 15. S0°28'08"W 81'
 16. S0°28'08"W 44.18'
 17. S6°37'47"W 36.44'
 18. S20°29'20"W 45.64'
 19. S33°24'56"W 45.42'
 20. S34°51'43"W 99.37'
 21. S34°51'43"W 45.32'
 22. S20°58'46"W 52.35'

SEE MAP 28 6 10C

SEE MAP 28 6 10CD

SEE MAP 28 6 10AD

SEE MAP 28 6 11CB

SEE MAP 28 6 11C

1/4 COR

1/4 COR

SEE MAP 28 6 15AB

SEE MAP 28 6 15AA

28 6 10D
& INDEX

4,151,000

551,000

10 11

15 14