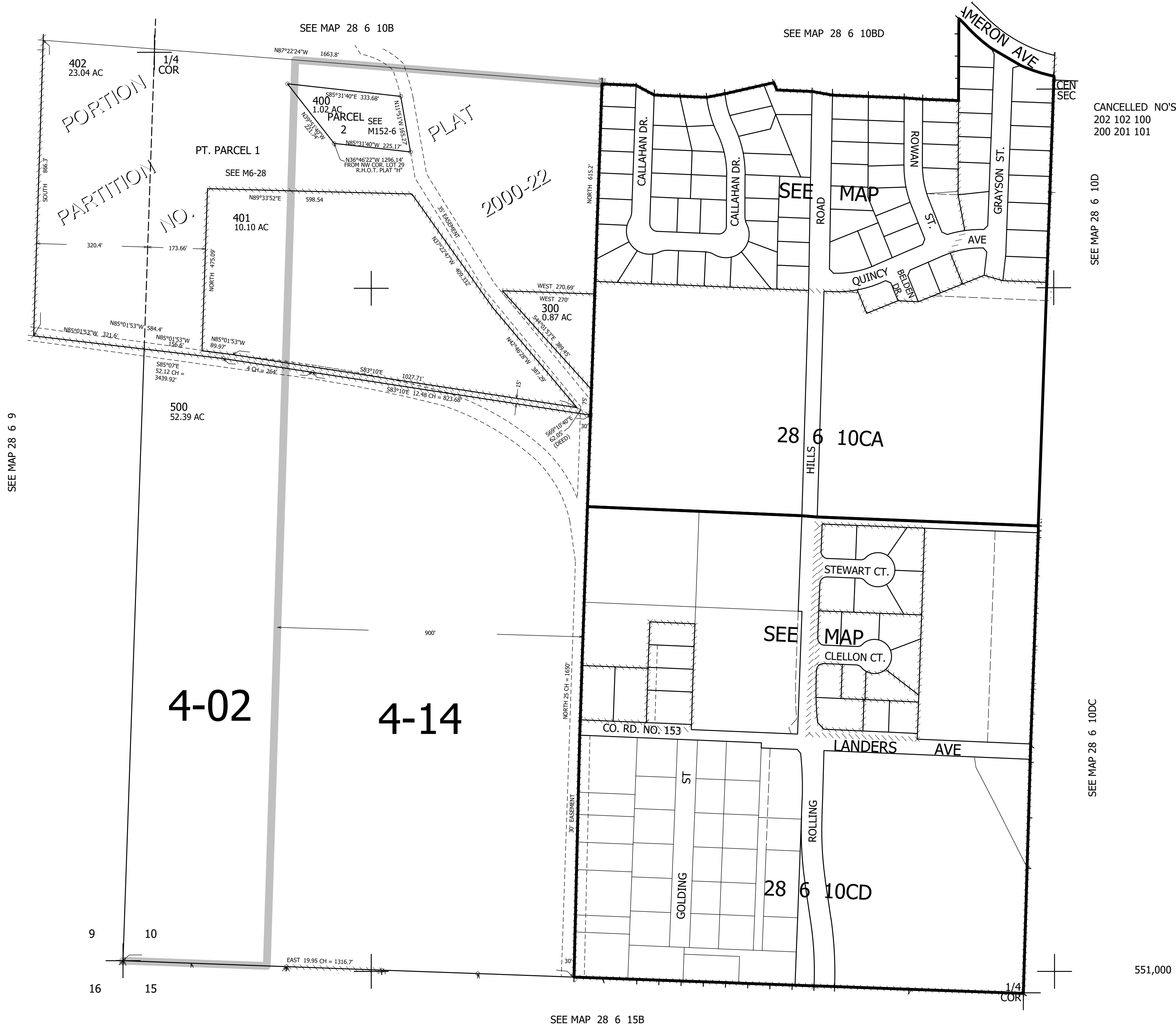


THIS MAP WAS PREPARED FOR ASSESSMENT PURPOSE ONLY.

SW1/4 SEC.10 T.28S. R.6W. W.M.
DOUGLAS COUNTY
1" = 200'

REVISED ON
2-3-22

28 6 10C
& INDEX



CANCELLED NO'S
202 102 100
200 201 101

SEE MAP 28 6 9

SEE MAP 28 6 10D

SEE MAP 28 6 10DC

SEE MAP 28 6 15B

551,000

4,149,000

28 6 10C
& INDEX