

THIS MAP WAS PREPARED FOR ASSESSMENT PURPOSE ONLY.

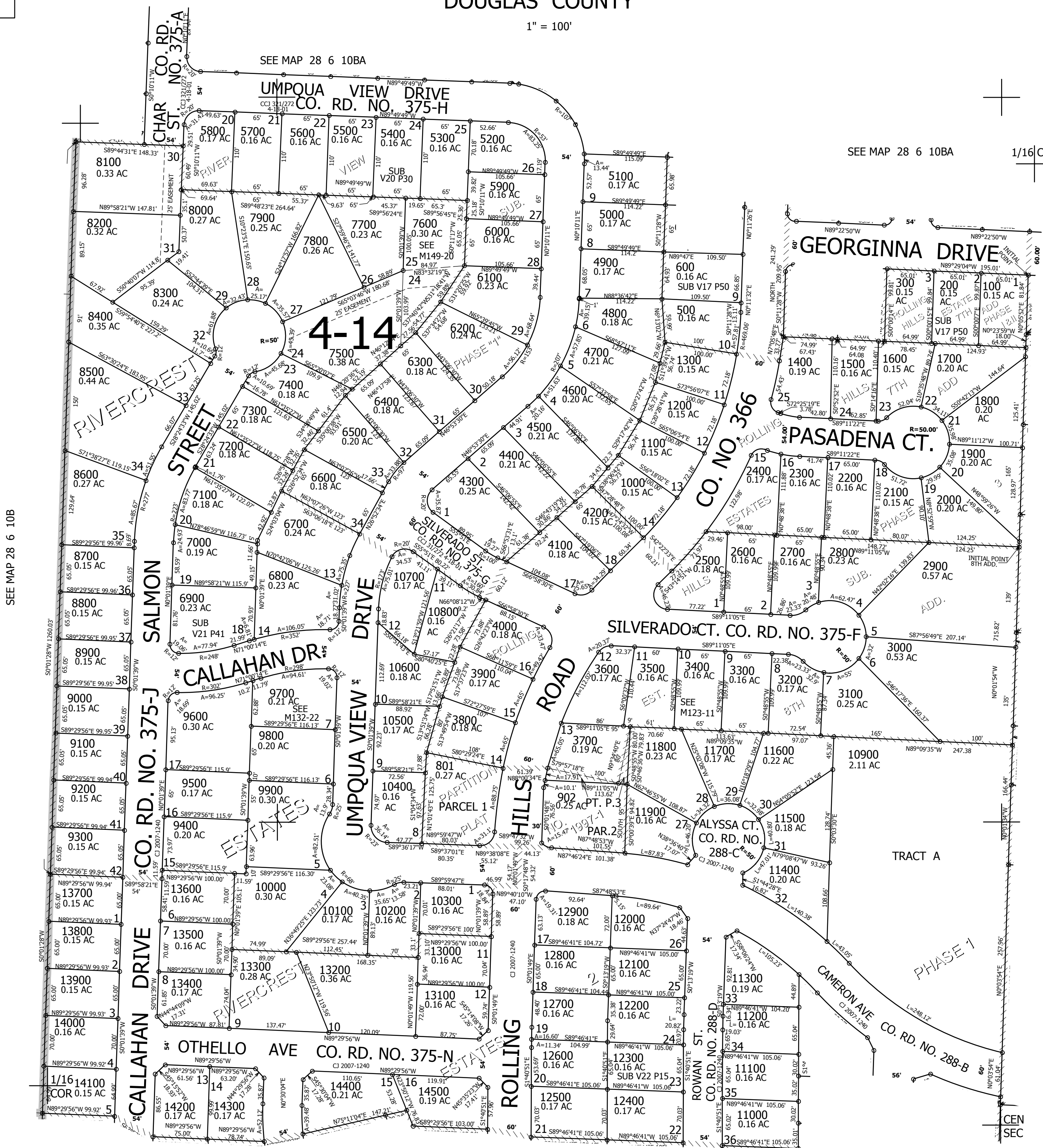
SE1/4 NW1/4 SEC.10 T.28S. R.6W. W.M. DOUGLAS COUNTY

REVISED ON 6-11-12

28 6 10BD

1" = 100'

CANCELLED NO'S 400 901 700 800 803 THRU 807 7501 802 900



SEE MAP 28 6 10B

SEE MAP 28 6 10BA

1/16 COR

SEE MAP 28 6 10AC

554,000

SEE MAP 28 6 10CA

4,149,000

28 6 10BD