

THIS MAP WAS PREPARED FOR ASSESSMENT PURPOSE ONLY.

NE1/4 NW1/4 SEC.10 T.28S. R.6W. W.M. DOUGLAS COUNTY

REVISED ON 2-3-22

28 6 10BA

1/16 COR

1" = 100'

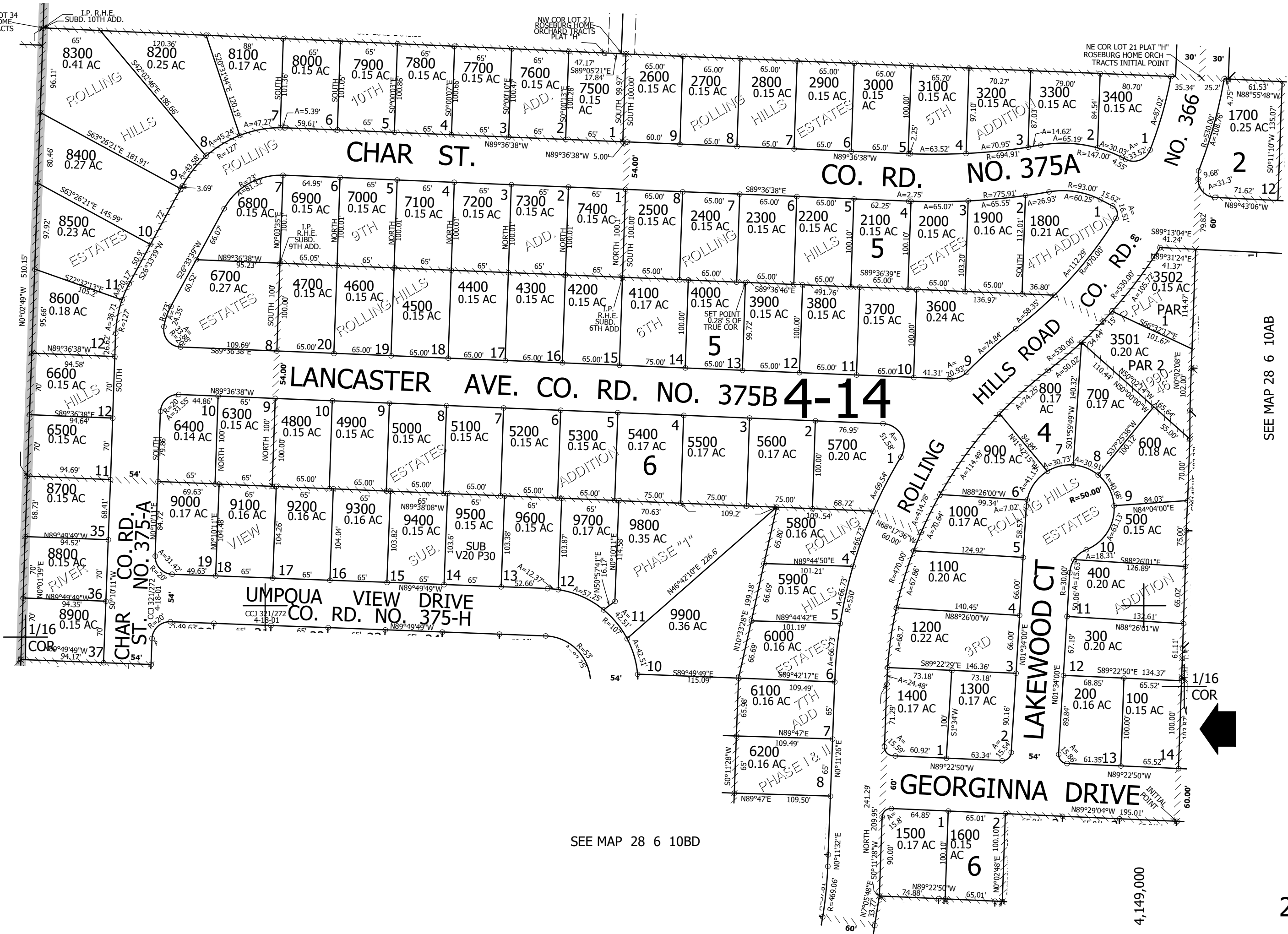
1/4 COR

CANCELLED NO'S 3503 3500

SEE MAP 28 6 10B

SEE MAP 28 6 10B

SEE MAP 28 6 10AB



SEE MAP 28 6 10BD

555,000

4,149,000

28 6 10BA