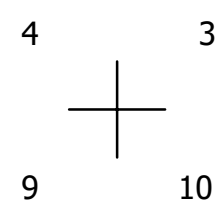
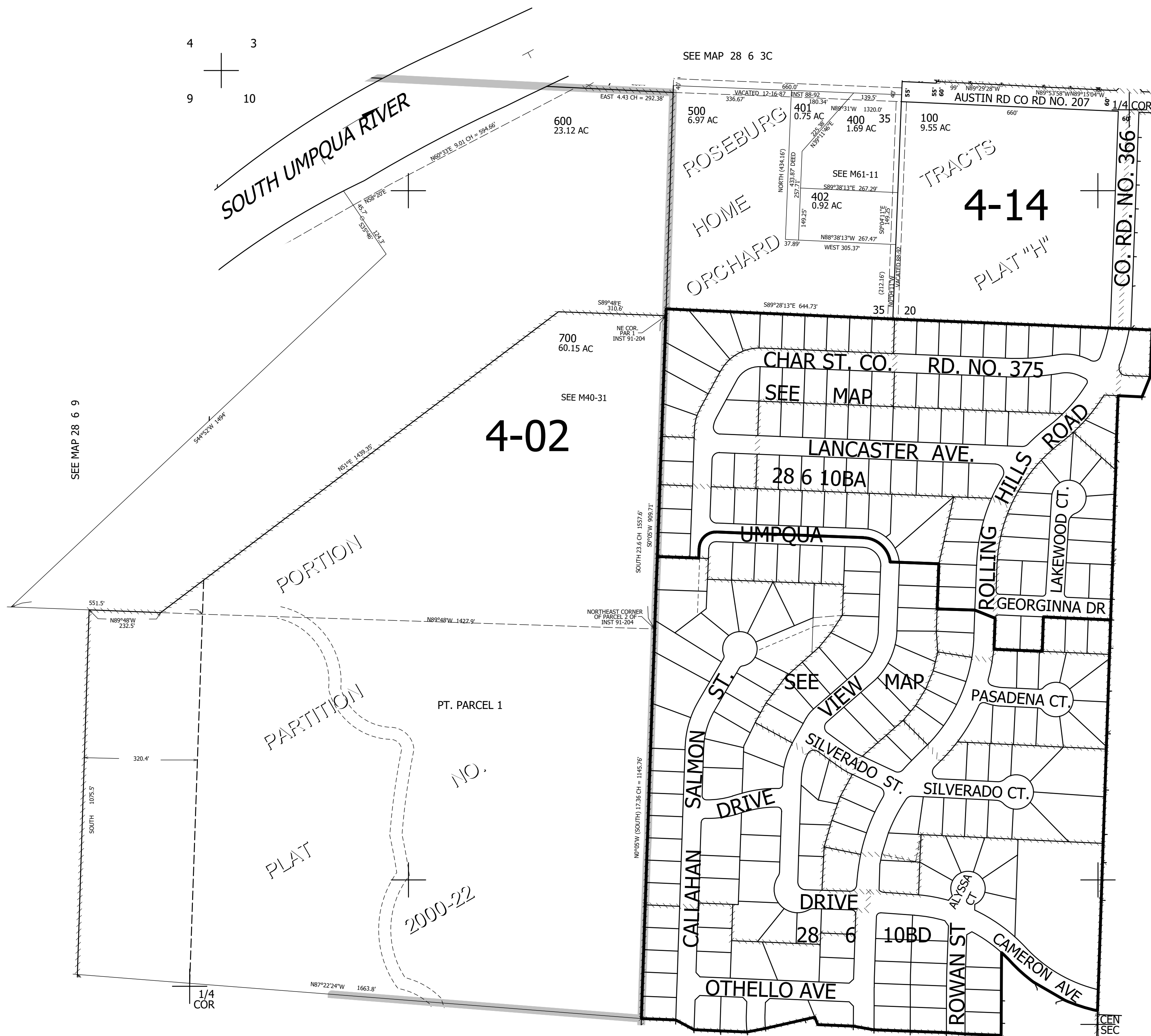


THIS MAP WAS PREPARED FOR ASSESSMENT PURPOSE ONLY.

NE1/4 SEC.10 T.28S. R.6W. W.M.
DOUGLAS COUNTY
1" = 200'

REVISED ON
2-2-22

28 6 10B
& INDEX



SEE MAP 28 6 9

SEE MAP 28 6 3C

SEE M40-31

4-02

CHAR ST. CO. RD. NO. 375

SEE MAP

LANCASTER AVE.

28 6 10BA

UMPQUA

SEE VIEW MAP

GEORGINNA DR

PASADENA CT.

SILVERADO ST.

SILVERADO CT.

DRIVE

28 6 10BD

OTHELLO AVE

ROWAN ST

CAMERON AVE

4,149,000

CANCELLED NO'S
201 203 200
202 300 600A1
301

SEE MAP 28 6 10AB

SEE MAP 28 6 10AC

554,000

SEE MAP 28 6 10C

28 6 10B
& INDEX