

THIS MAP WAS PREPARED FOR ASSESSMENT PURPOSE ONLY.

Upper Left:  
123°23'45"W 43°9'11"N  
4148725E 555111N ft

SW1/4 NE1/4 SEC.10 T.28S. R.06W. W.M.  
DOUGLAS COUNTY

1" = 100'  
SEE MAP  
2806W10AB

Date Exported 2023-11-07

280610AC

- ESTATES SUB.
1. N42°18'52"E C=18.91' L=19.02'
  2. N3°22'53"E C=47' L=48.92'
  3. N47°36'27"W C=39' L=40.06'
  4. S89°33'40"W C=34' L=34.69'
  5. S49°03'52"W C=35.22' L=35.99'
  6. S6°43'44"W C=37' L=37.9'
  7. S34°01'E C=32.61' L=33.21'

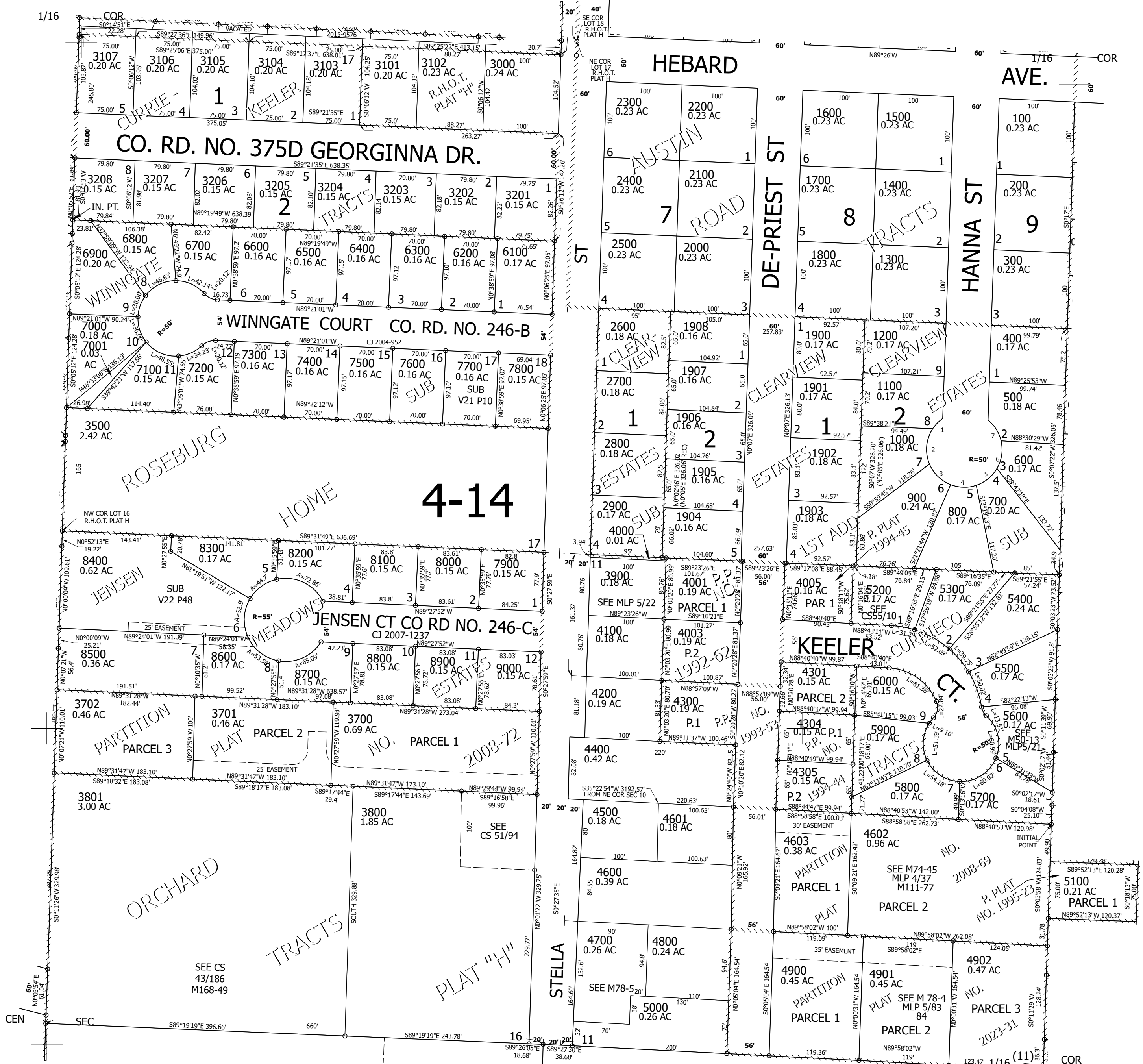
CANCELLED NOS:  
3100 4303 3200  
4302 4004 4002  
3300 3400 3600

SEE MAP 2806W10BA

SEE MAP 2806W10BD

SEE MAP 2806W10D

SEE MAP 2806W10AD



280610AC

Lower Right:  
123°23'18"W 43°8'55"N  
4150687E 553372N ft