

THIS MAP WAS PREPARED FOR ASSESSMENT PURPOSE ONLY.

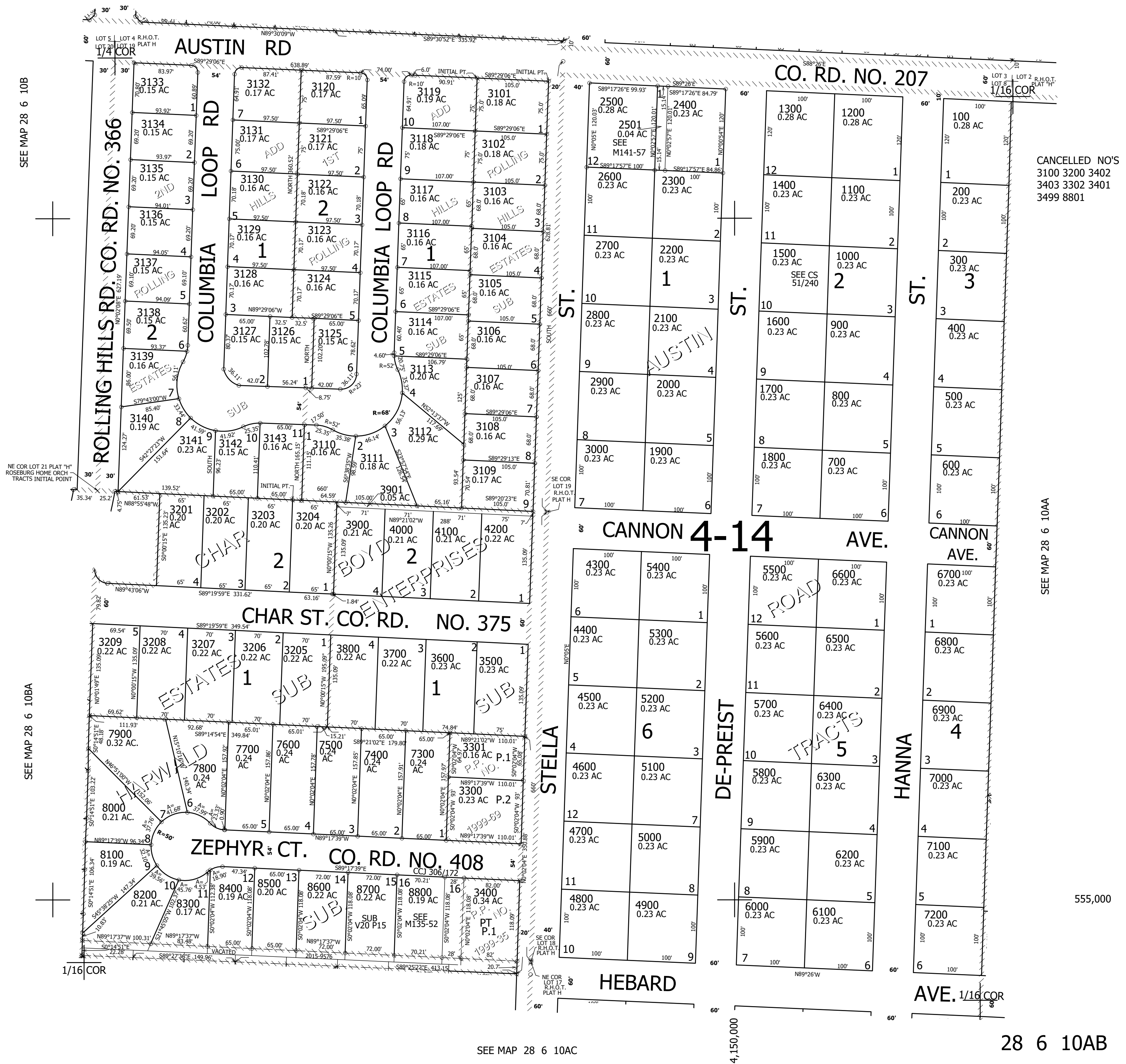
NW1/4 NE1/4 SEC.10 T.28S. R.6W. W.M. DOUGLAS COUNTY

REVISED ON 2-2-22

28 6 10AB

1" = 100'

SEE MAP 28 6 3DC



SEE MAP 28 6 10B

SEE MAP 28 6 10BA

SEE MAP 28 6 10AA

SEE MAP 28 6 10AC

28 6 10AB