

THIS MAP WAS PREPARED FOR ASSESSMENT PURPOSE ONLY.

Upper Left:
123°25'49"W 43°10'22"N
4139819E 562601N ft

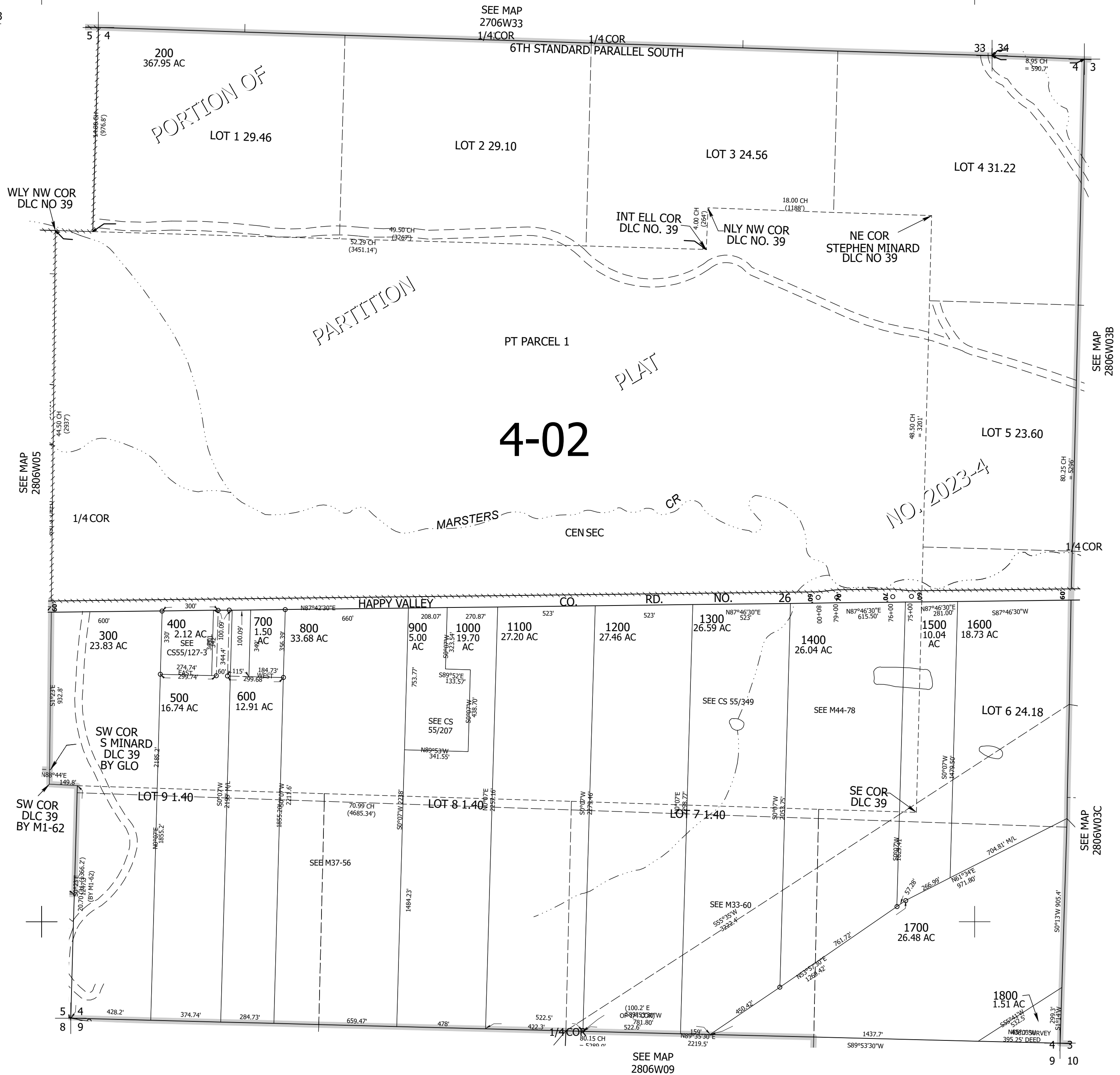
SEC.04 T.28S. R.06W. W.M.
DOUGLAS COUNTY
1" = 400'

Date Expired: 2/23/2023 8:40 AM

280604 &

CANCELLED NOS:
1300M1 100

32 33



SEE MAP 2806W03B

SEE MAP 2806W03C

SEE MAP 2806W09

Lower Right:
123°24'1"W 43°9'16"N
4147572E 555579N ft

280604 &