

THIS MAP WAS PREPARED FOR ASSESSMENT PURPOSE ONLY.

NE1/4 SE1/4 SEC.3 T.28S. R.6W. W.M. DOUGLAS COUNTY

REVISED ON 3-10-16

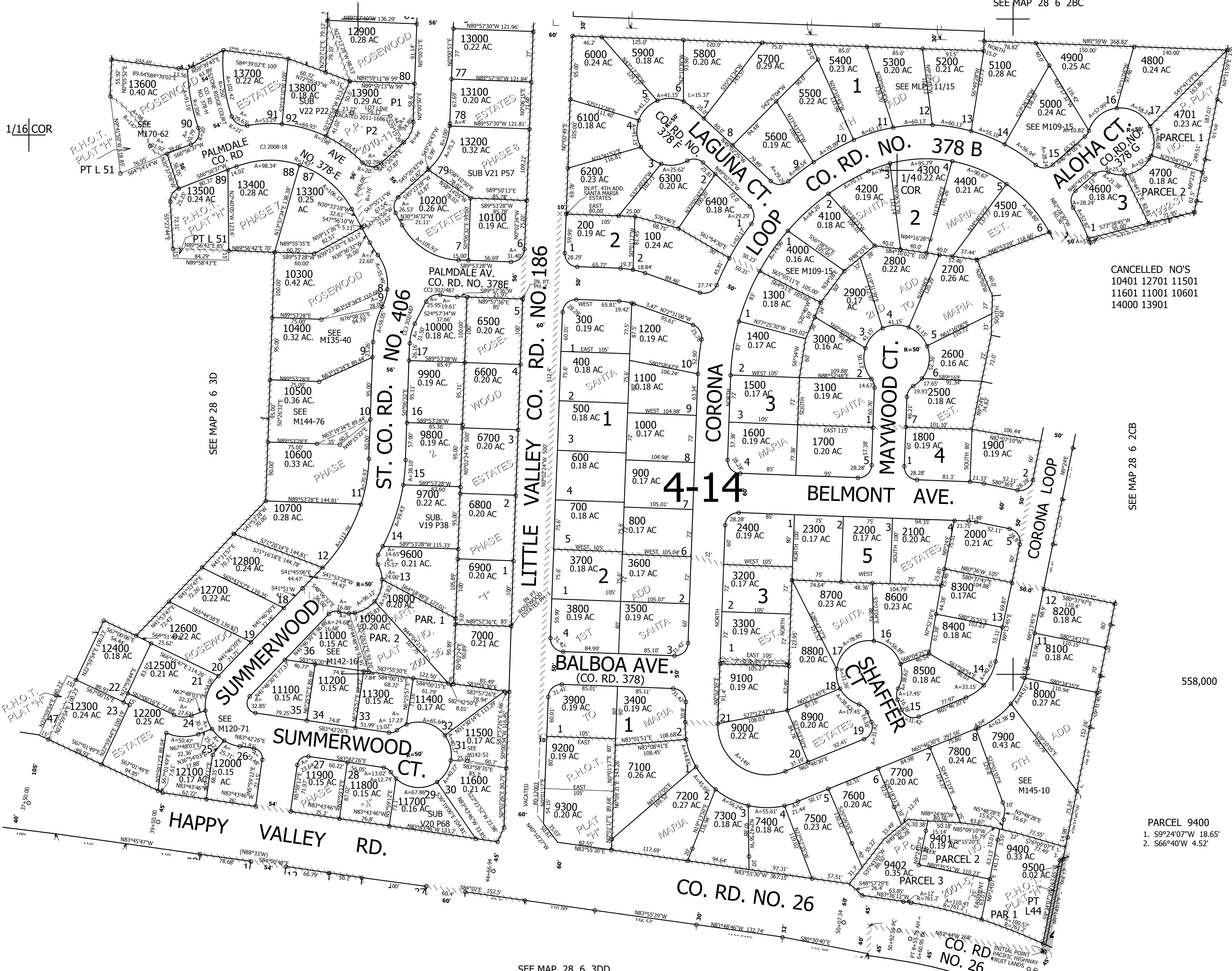
28 6 3DA

1" = 100'

SEE MAP 28 6 3AD

SEE MAP 28 6 2BC

1/16 COR



CANCELLED NO'S
 10401 12701 11501
 11601 11001 10601
 14000 13901

SEE MAP 28 6 2CB

558,000

PARCEL 9400
 1. S9°24'07"W 18.65'
 2. S66°40'W 4.52'

SEE MAP 28 6 3DD

SEE MAP 28 6 2CC

1/16 COR

4,151,000

1/16 COR

28 6 3DA