

THIS MAP WAS PREPARED FOR ASSESSMENT PURPOSE ONLY.

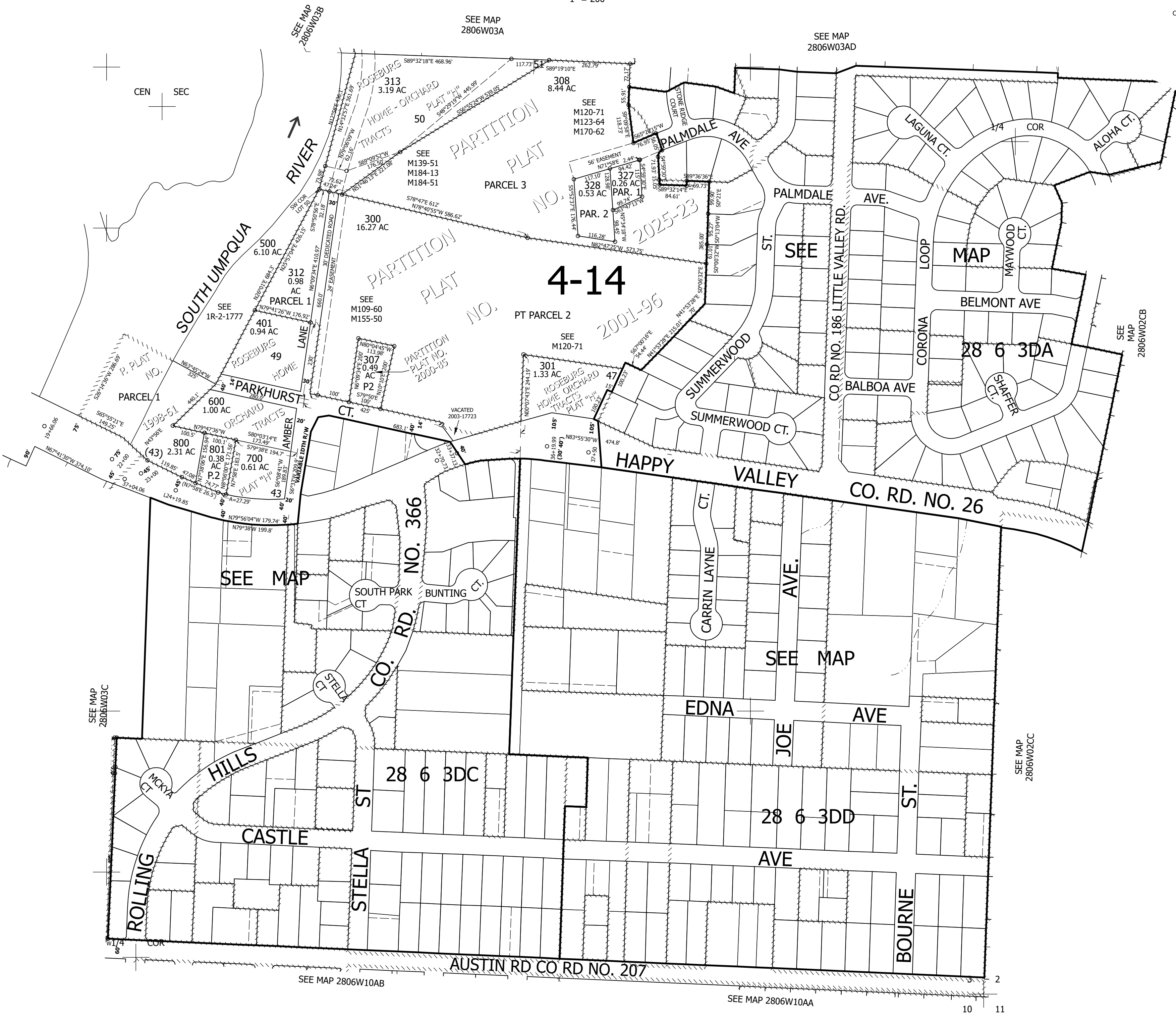
Upper Left:  
123°23'49"W 43°9'54"N  
4148538E 559380N ft

SE1/4 SEC.03 T.28S. R.06W. W.M.  
DOUGLAS COUNTY  
1" = 200'

Date Exported 2025-10-21

280603D  
& INDEX

CANCELLED NOS:  
201 302 205  
207 202 303  
208 100 203  
304 101 204  
200 206 305  
306 309 310  
400 311 315  
316 314 317  
320 321 319  
322 318 323  
324 325 326



280603D  
& INDEX

Lower Right:  
123°22'55"W 43°9'19"N  
4152465E 555780N ft