

THIS MAP WAS PREPARED FOR ASSESSMENT PURPOSE ONLY.

Upper Left:
123°24'23"W 43°10'16"N
4146161E 561746N ft

NW1/4 SEC.03 T.28S. R.06W. W.M.
DOUGLAS COUNTY

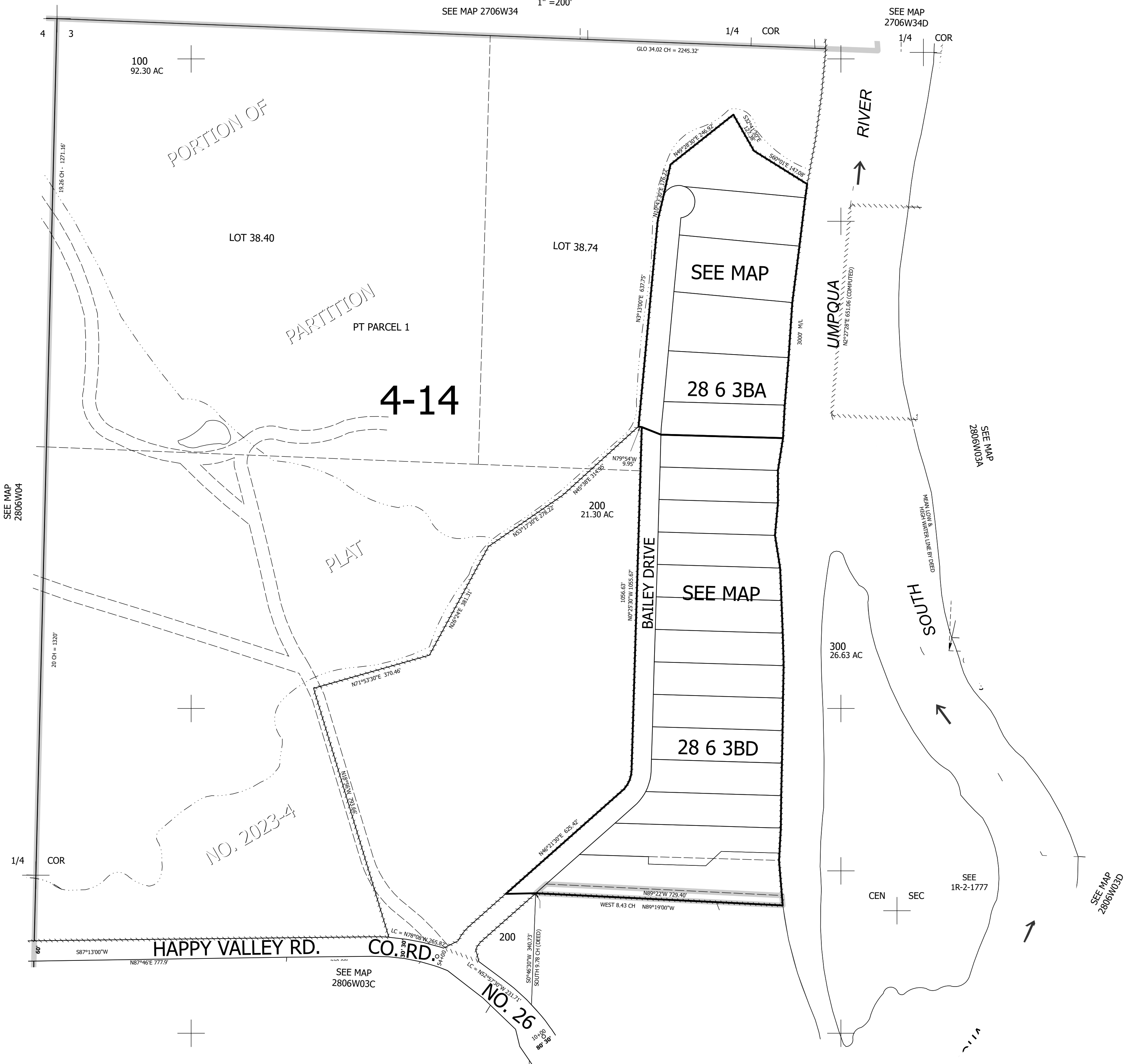
SEE MAP 2706W34

1" = 200'

Date Exported 2025-03-13

280603B
& INDEX

CANCELLED NOS:



280603B
& INDEX

Lower Right:
123°23'28"W 43°9'43"N
4150086E 558268N ft