

THIS MAP WAS PREPARED FOR ASSESSMENT PURPOSE ONLY.

Upper Left:
123°23'53"W 43°10'20"N
4148395E 562050N ft

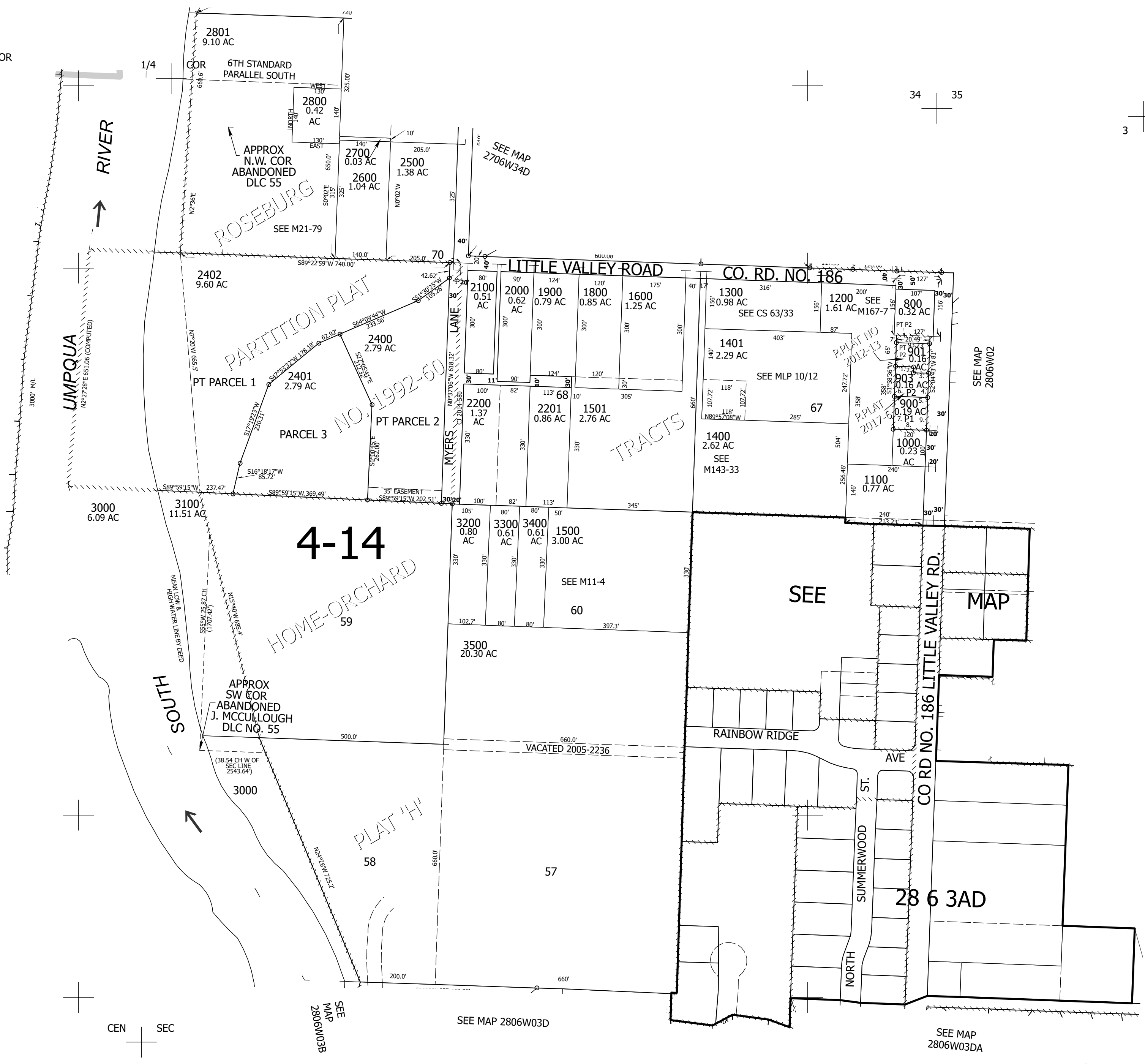
NE1/4 SEC.03 T.28S. R.06W. W.M.
DOUGLAS COUNTY
1" = 200'

Date Expired 2024-08-05

280603A
& INDEX

- PP 2017-6
- 1. S87°55'55"E 51.11'
- 2. S2°04'43"W 16'
- 3. S87°55'55"E 42'
- 4. S2°04'43"W 66.52'
- 5. N87°55'55"W 92.96'
- 6. N1°58'36"E 82.51'
- 7. S1°58'36"W 90'
- 8. N87°55'55"W 92.8'
- 9. N2°04'43"E 90'

- CANCELLED NOS:
- 1700 2900 203
 - 1402 206 200
 - 201 202 204
 - 205 207 208
 - 209 210 300
 - 400 500 600
 - 700 902 2300



1/4 COR

280603A
& INDEX

Lower Right:
123°22'58"W 43°9'47"N
4152319E 558573N ft