

THIS MAP WAS PREPARED FOR ASSESSMENT PURPOSE ONLY.

NE1/4 SE1/4 SEC.2 T.28S. R.6W. W.M.
DOUGLAS COUNTY
1" = 100'

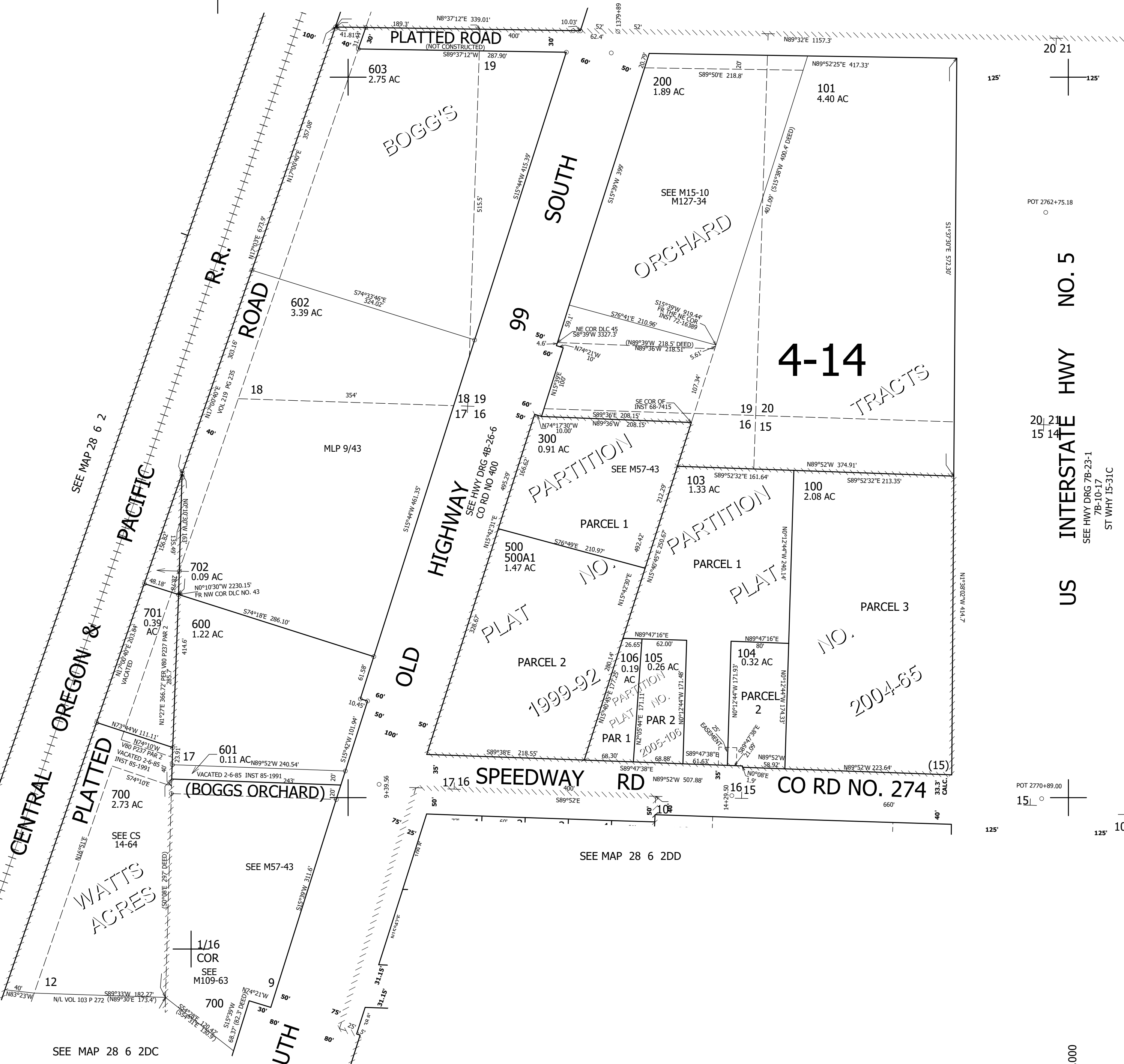
REVISED ON
3-29-22

28 6 2DA

SEE MAP 28 6 2AD

1/16 COR

1/4 COR



CANCELLED NO'S
102 201 400

POT 2762+75.18

POT 2770+89.00

557,500

US INTERSTATE HWY NO. 5

SEE HWY DRG 7B-23-1
7B-10-17
ST WHY I5-31C

SEE MAP 28 6 1C

SEE MAP 28 6 2

SEE MAP 28 6 2DC

SEE MAP 28 6 2DD

4,157,000

28 6 2DA