

THIS MAP WAS PREPARED FOR ASSESSMENT PURPOSE ONLY.

NW1/4 SW1/4 SEC.2 T.28S. R.6W. W.M.
DOUGLAS COUNTY

REVISED ON
2-2-22

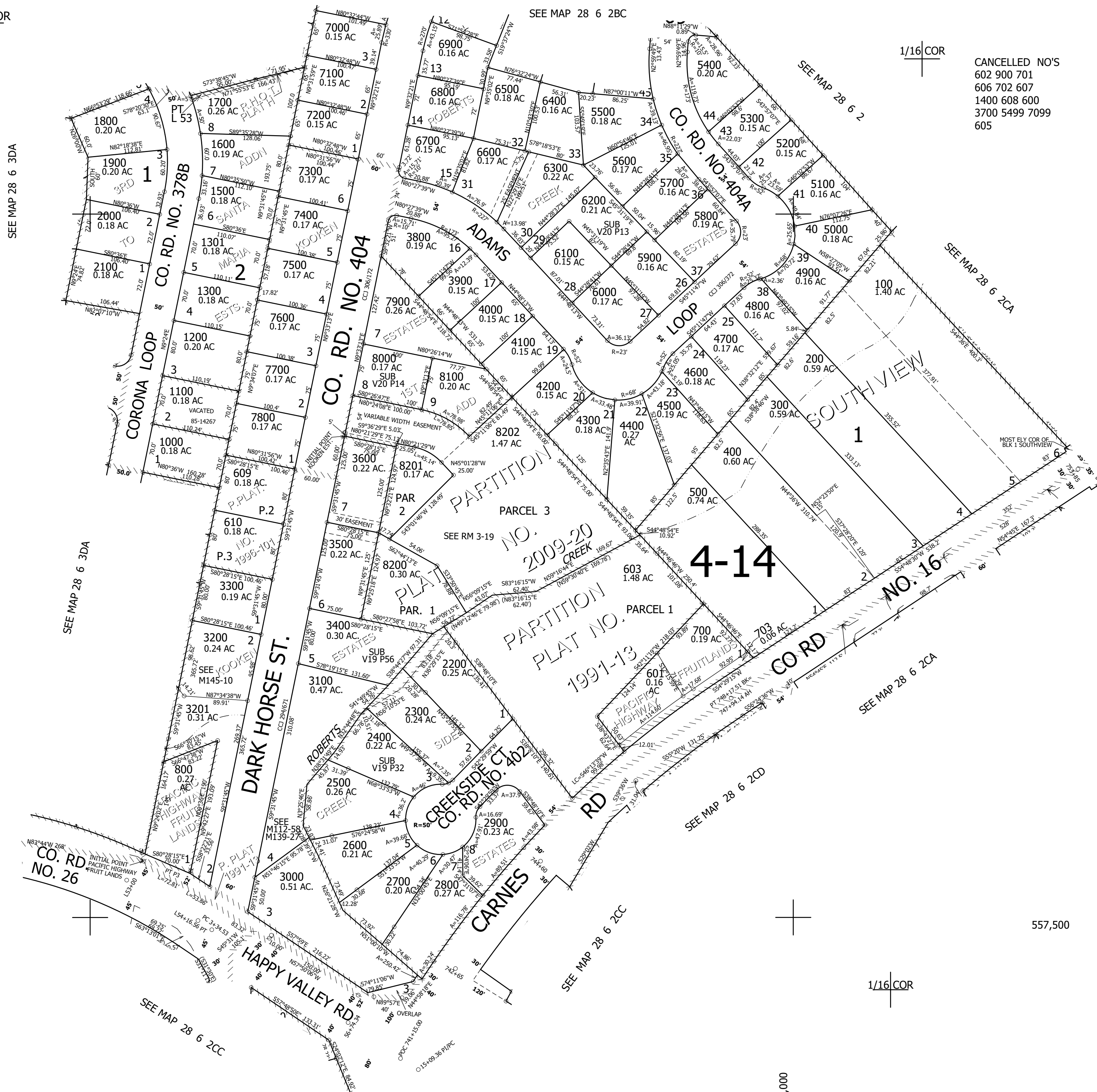
28 6 2CB

1" = 100'

1/4 COR

1/16 COR

CANCELLED NO'S
602 900 701
606 702 607
1400 608 600
3700 5499 7099
605



1/16 COR

1/16 COR

557,500

4,153,000

28 6 2CB