

NE1/4 SW1/4 SEC.2 T.28S. R.6W. W.M.  
DOUGLAS COUNTY

28 6 2CA

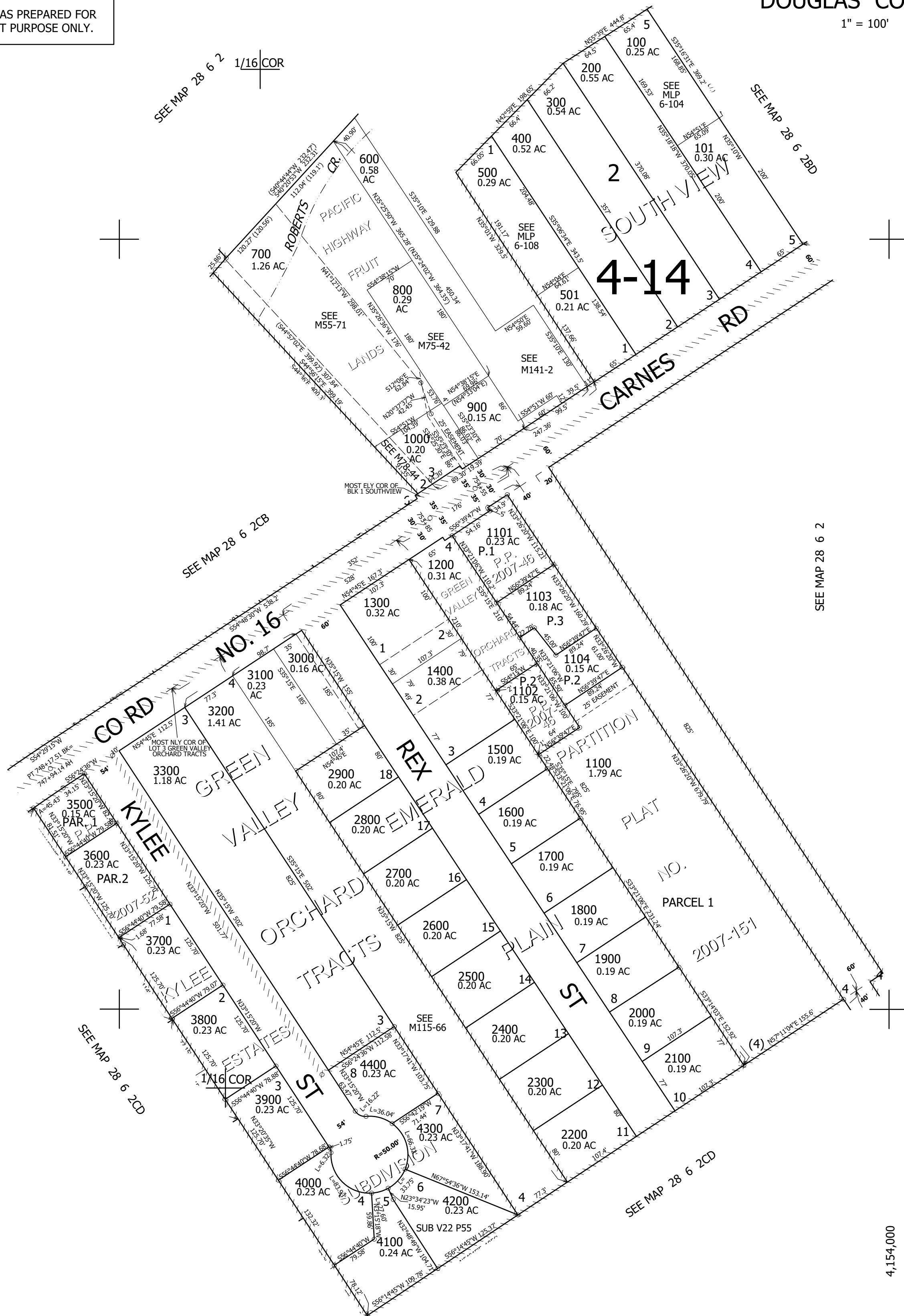
1" = 100'

REVISED ON  
8-4-16

THIS MAP WAS PREPARED FOR  
ASSESSMENT PURPOSE ONLY.

CEN|SEC

CANCELLED NO'S  
3400 3099



SEE MAP 28 6 2

557,500

1/16 COR

4,154,000

28 6 2CA