

THIS MAP WAS PREPARED FOR ASSESSMENT PURPOSE ONLY.

# SE1/4 NW1/4 SEC.2 T.28S. R.6W. W.M. DOUGLAS COUNTY

REVISED ON  
11-15-11

28 6 2BD

1/16 COR

1" = 100'

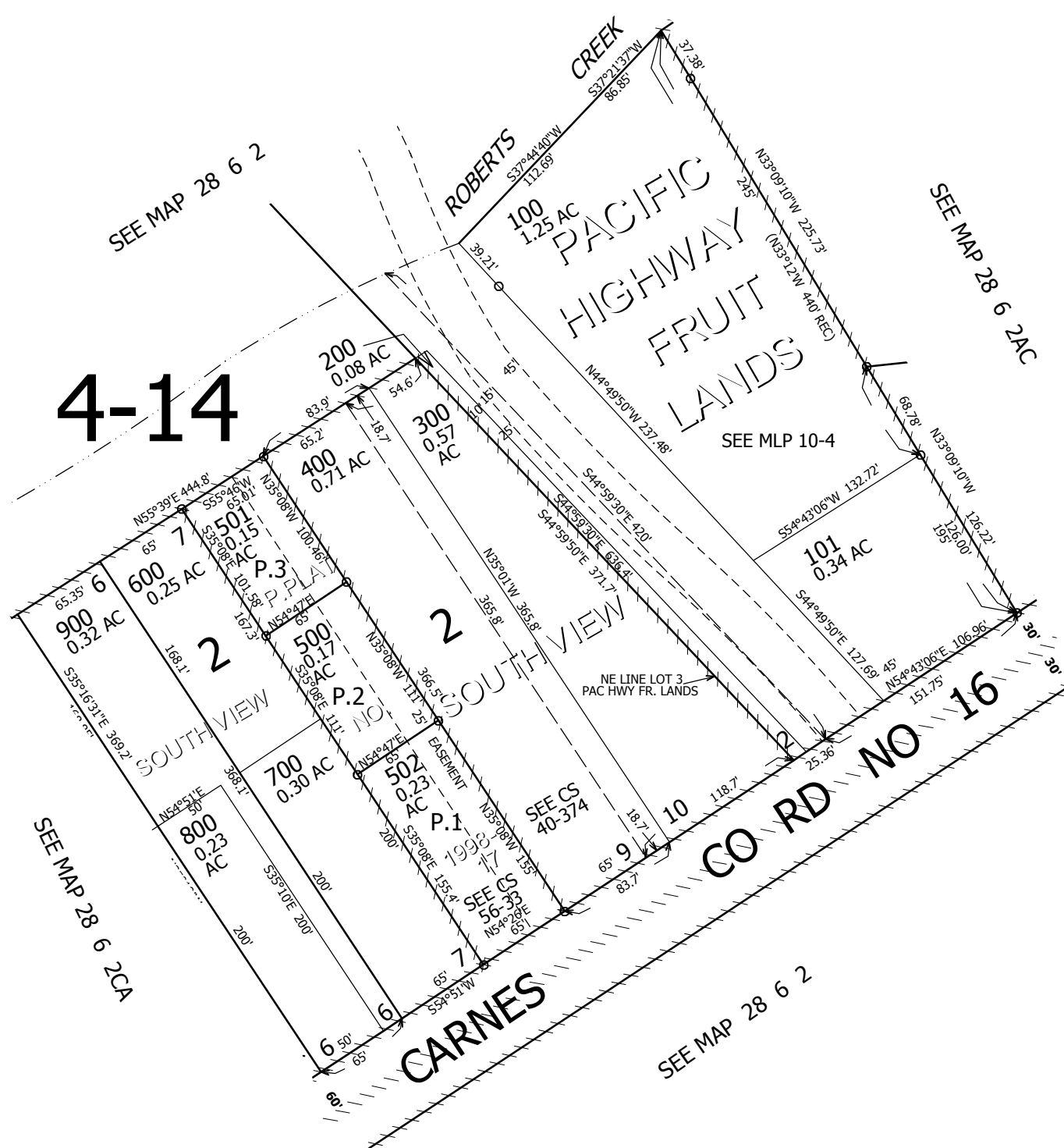
1/16 COR

CANCELLED NO'S

1/16 COR

559,000

CEN SEC



4,154,000

28 6 2BD