

THIS MAP WAS PREPARED FOR ASSESSMENT PURPOSE ONLY.

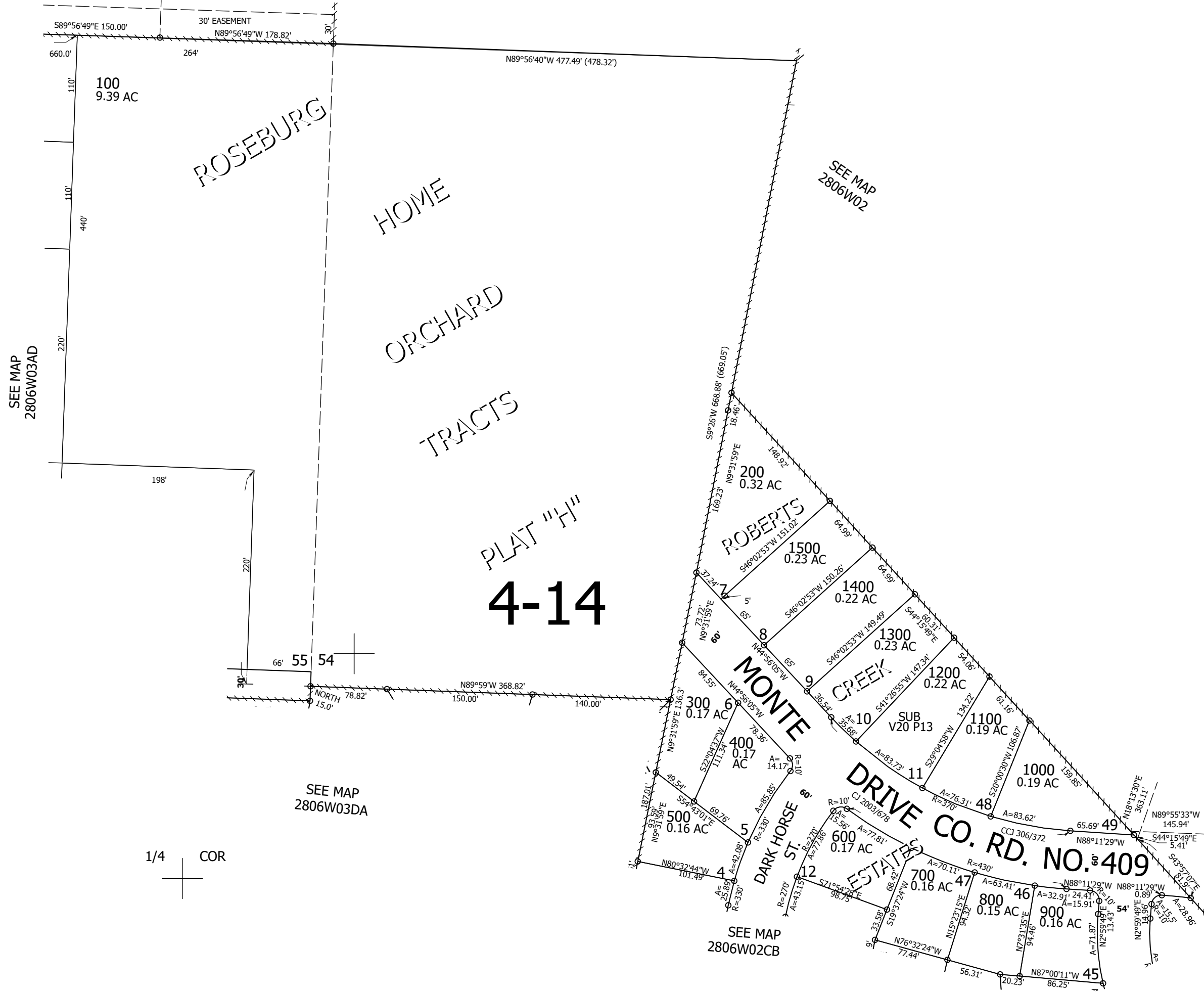
Upper Left:  
123°23'12"W 43°10'1"N  
4151304E 560033N ft

SW1/4 NW1/4 SEC.02 T.28S. R.06W. W.M.  
DOUGLAS COUNTY  
1" = 100'

Date Exported 2026-05-21

280602BC

CANCELLED NOS:  
299



SEE MAP  
2806W03AD

SEE MAP  
2806W02

SEE MAP  
2806W03DA

SEE MAP  
2806W02CB

1/4 COR

1/16 COR

280602BC

Lower Right:  
123°22'45"W 43°9'44"N  
4153276E 558294N ft