

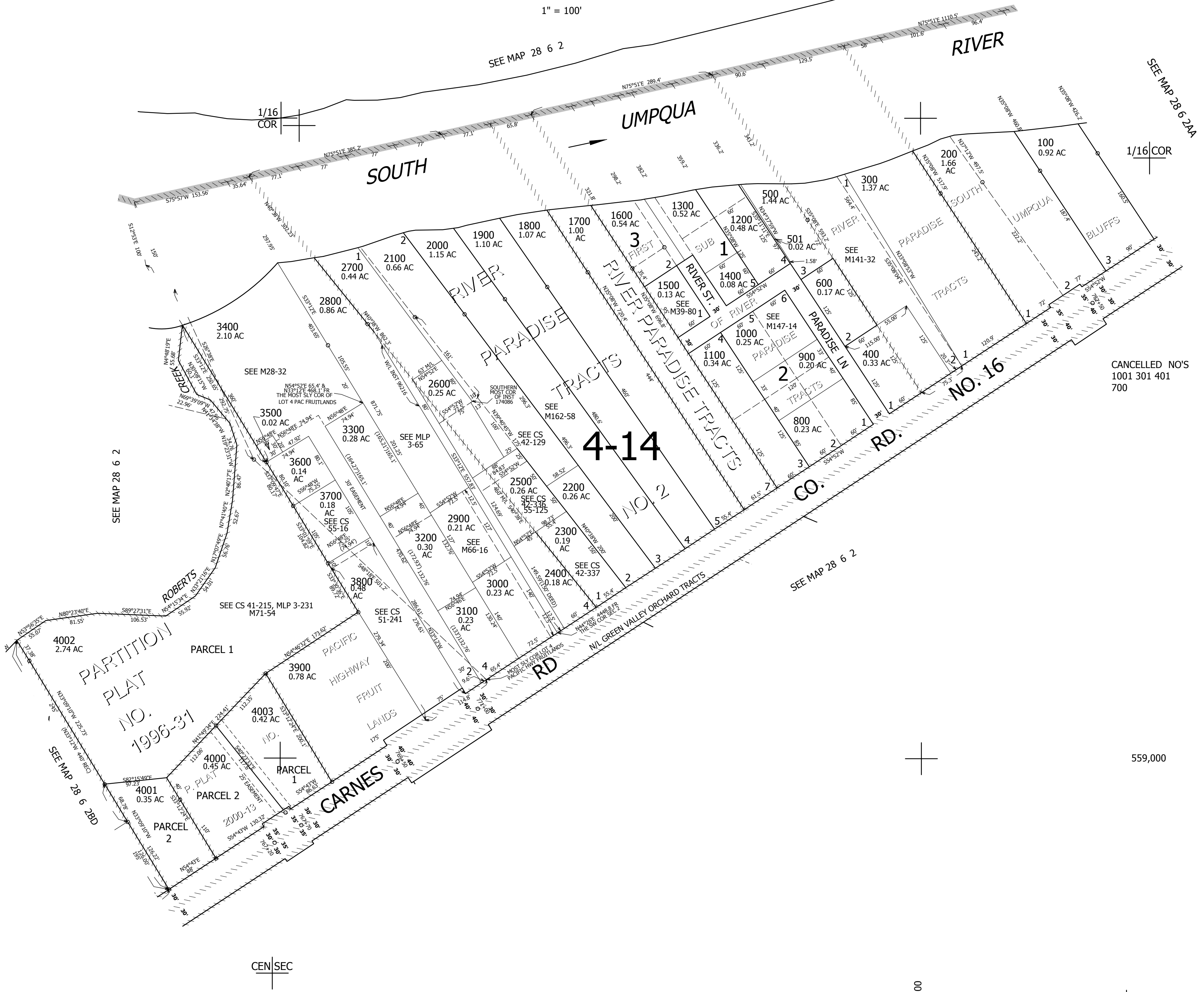
THIS MAP WAS PREPARED FOR ASSESSMENT PURPOSE ONLY.

SW1/4 NE1/4 SEC.2 T.28S. R.6W. W.M. DOUGLAS COUNTY

REVISED ON 12-19-19

28 6 2AC

1" = 100'



CANCELLED NO'S
1001 301 401
700

559,000

CEN|SEC

4,155,500

1/16 COR

28 6 2AC