

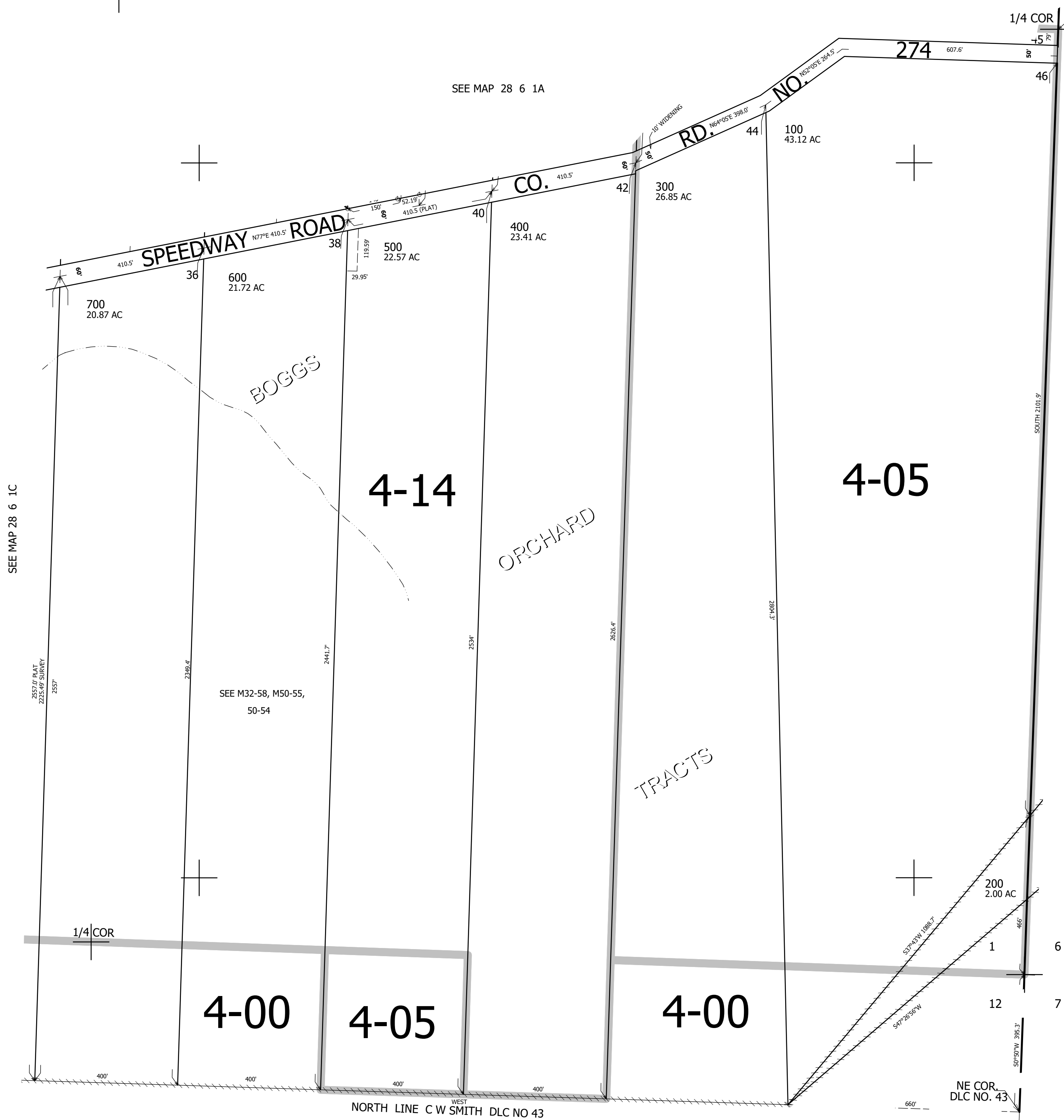
THIS MAP WAS PREPARED FOR ASSESSMENT PURPOSE ONLY.

SE1/4 SEC.1 T.28S. R.6W. W.M.
DOUGLAS COUNTY
1" = 200'

REVISED ON
2-2-22

28 6 1D

CEN SEC



CANCELLED NO'S

SEE MAP 28 6 12

28 6 1D