

THIS MAP WAS PREPARED FOR ASSESSMENT PURPOSE ONLY.

Upper Left:
123°22'5"W 43°9'50"N
4156277E 558752N ft

SW1/4 SEC.01 T.28S. R.06W. W.M.
DOUGLAS COUNTY
1" = 200'

Date Exported 2025-03-13

280601C
& INDEX

CANCELLED NOS:
700M1 799 701

SEE MAP 2806W02

SEE MAP 2806W02DA

SEE MAP 2806W02DD

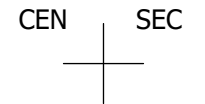
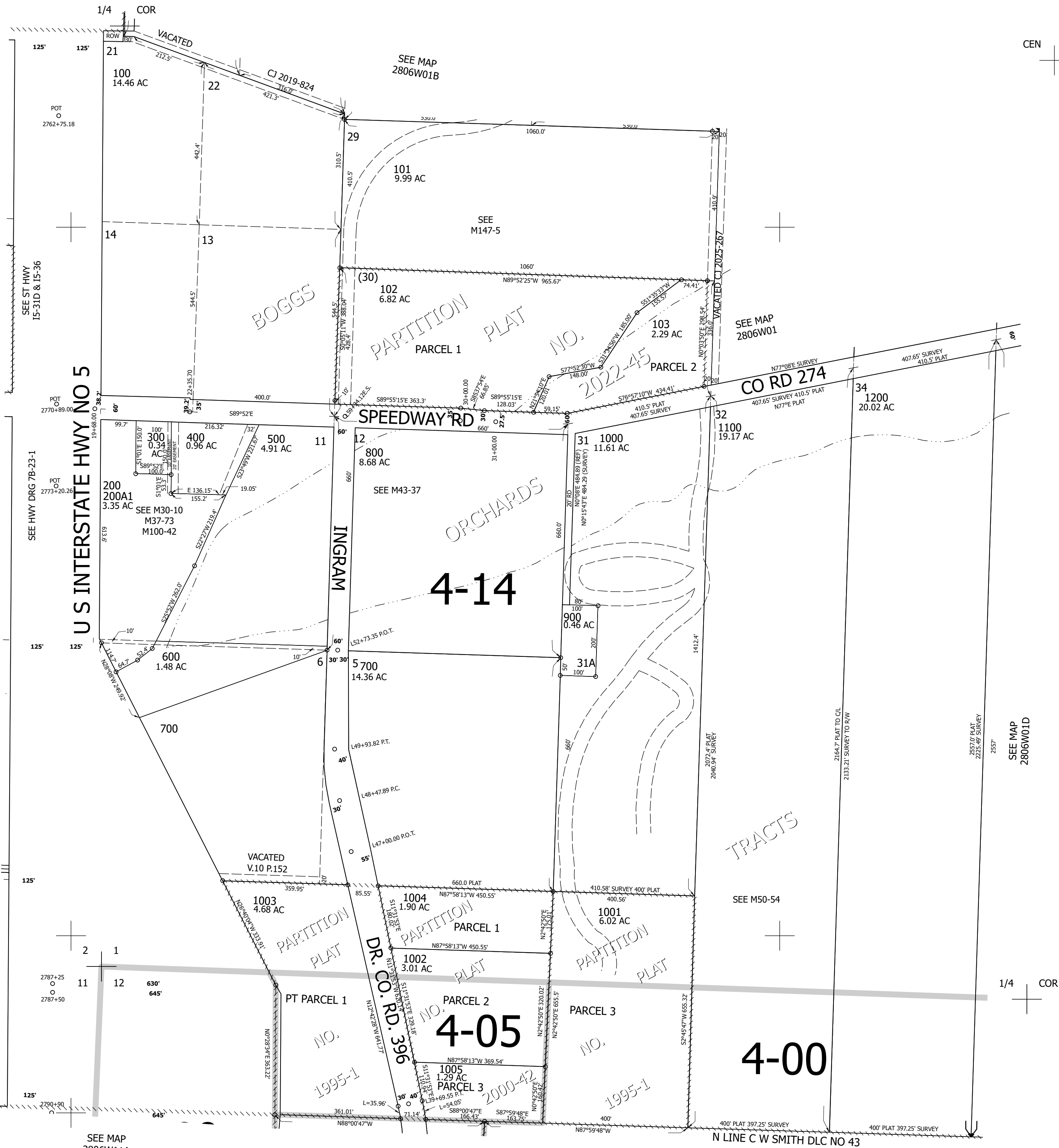
SEE MAP 2806W11AA

SEE MAP 2806W11A

SEE MAP 2806W12

SEE MAP 2806W01

SEE MAP 2806W01D



1/4 COR

Lower Right:
123°21'10"W 43°9'17"N
4160202E 555275N ft

280601C
& INDEX