

THIS MAP WAS PREPARED FOR ASSESSMENT PURPOSE ONLY.

Upper Left:
123°22'9"W 43°10'17"N
4156039E 561542N ft

NW1/4 SEC.01 T.28S. R.06W. W.M.
DOUGLAS COUNTY
1" = 200'

Date Exported 2025-03-13

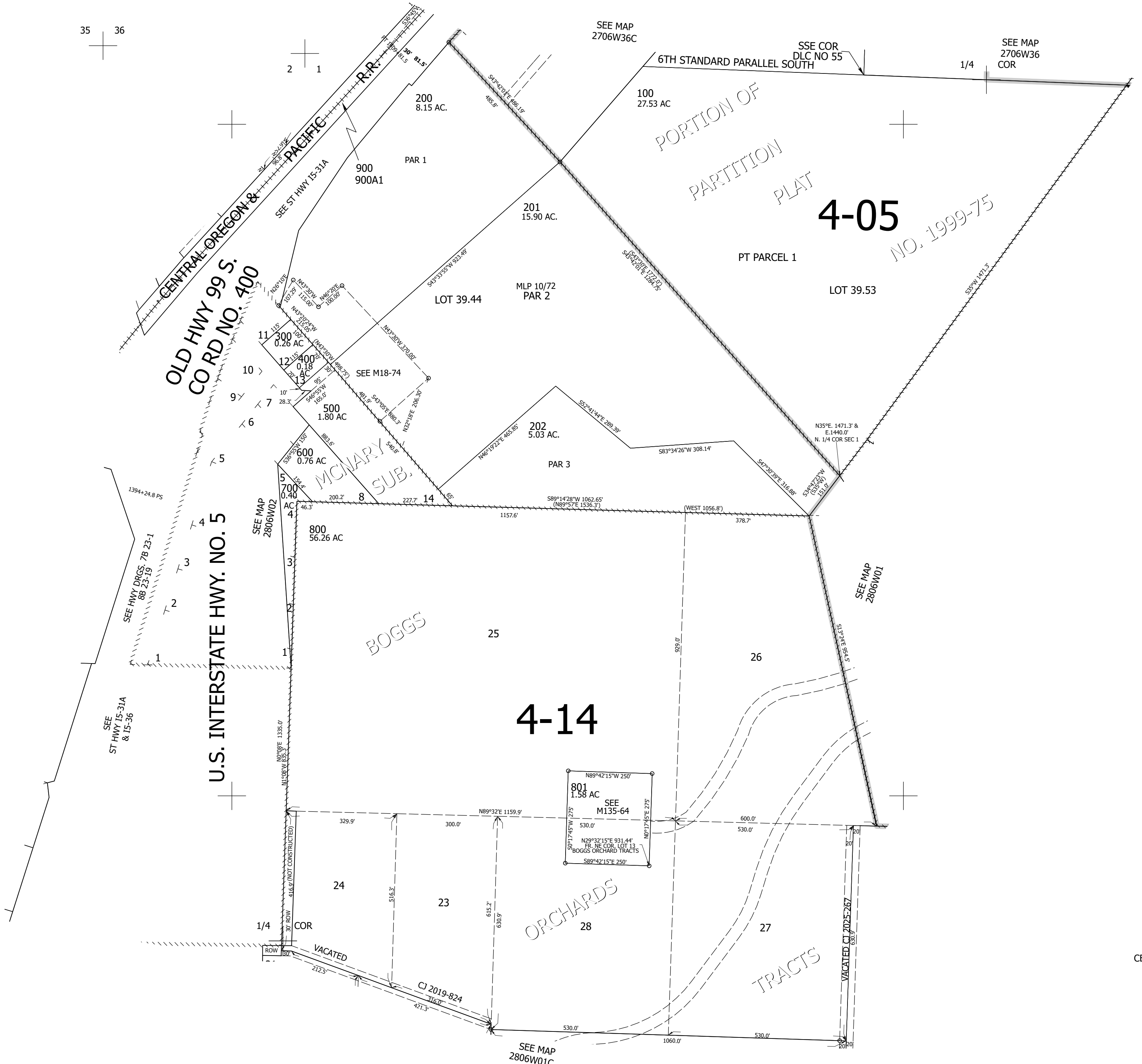
280601B

CANCELLED NOS:
101

35 36

2 1

1/4



SEE
ST HWY 15-314
& 15-36

U.S. INTERSTATE HWY. NO. 5

SEE HWY DIRS. 7B 23-1
8B 23-19

OLD HWY 99 S.
CO RD NO. 400

BOGGS

4-14

801
1.58 AC
SEE
M135-64

ORCHARDS

TRACTS

PORTION OF
PARTITION
PLAT

4-05

NO. 1999-75

PT PARCEL 1

CEN SEC

280601B

Lower Right:
123°21'15"W 43°9'44"N
4159964E 558064N ft