

1/4 COR

THIS MAP WAS PREPARED FOR ASSESSMENT PURPOSE ONLY.

# NE1/4 SEC.1 T.28S. R.6W. W.M. DOUGLAS COUNTY

1" = 200'

36 31

1 6

28 6 1A

REVISED ON 2-2-22

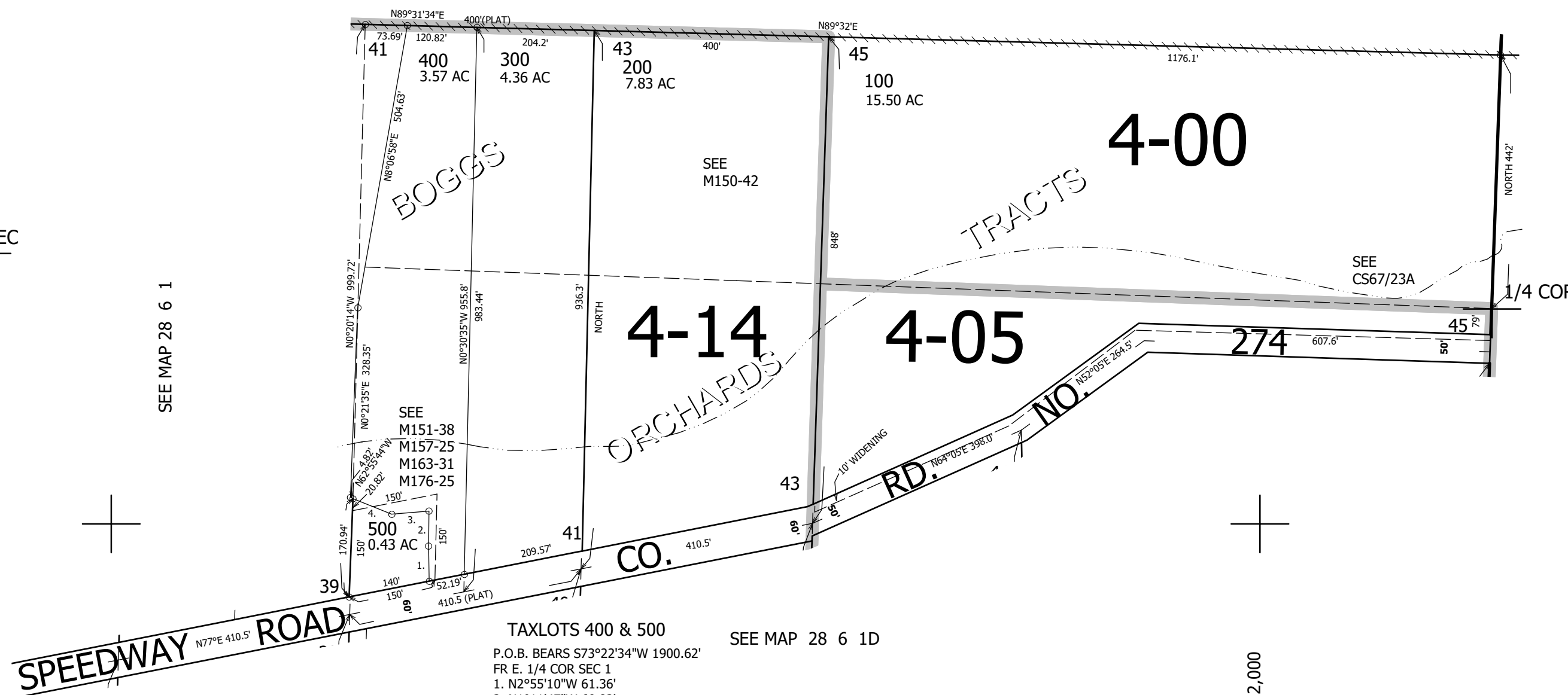
CANCELLED NO'S 401 501 402

SEE MAP 28 6 1

CEN SEC

SEE MAP 28 6 1

SEE MAP 28 5 6



TAXLOTS 400 & 500  
 P.O.B. BEARS S73°22'34"W 1900.62'  
 FR E. 1/4 COR SEC 1  
 1. N2°55'10"W 61.36'  
 2. N1°11'47"W 60.82'  
 3. S83°20'06"W 65.16'  
 4. N70°01'09"W 72.69'

SEE MAP 28 6 1D

4,162,000

558,000

28 6 1A