

THIS MAP WAS PREPARED FOR ASSESSMENT PURPOSE ONLY.

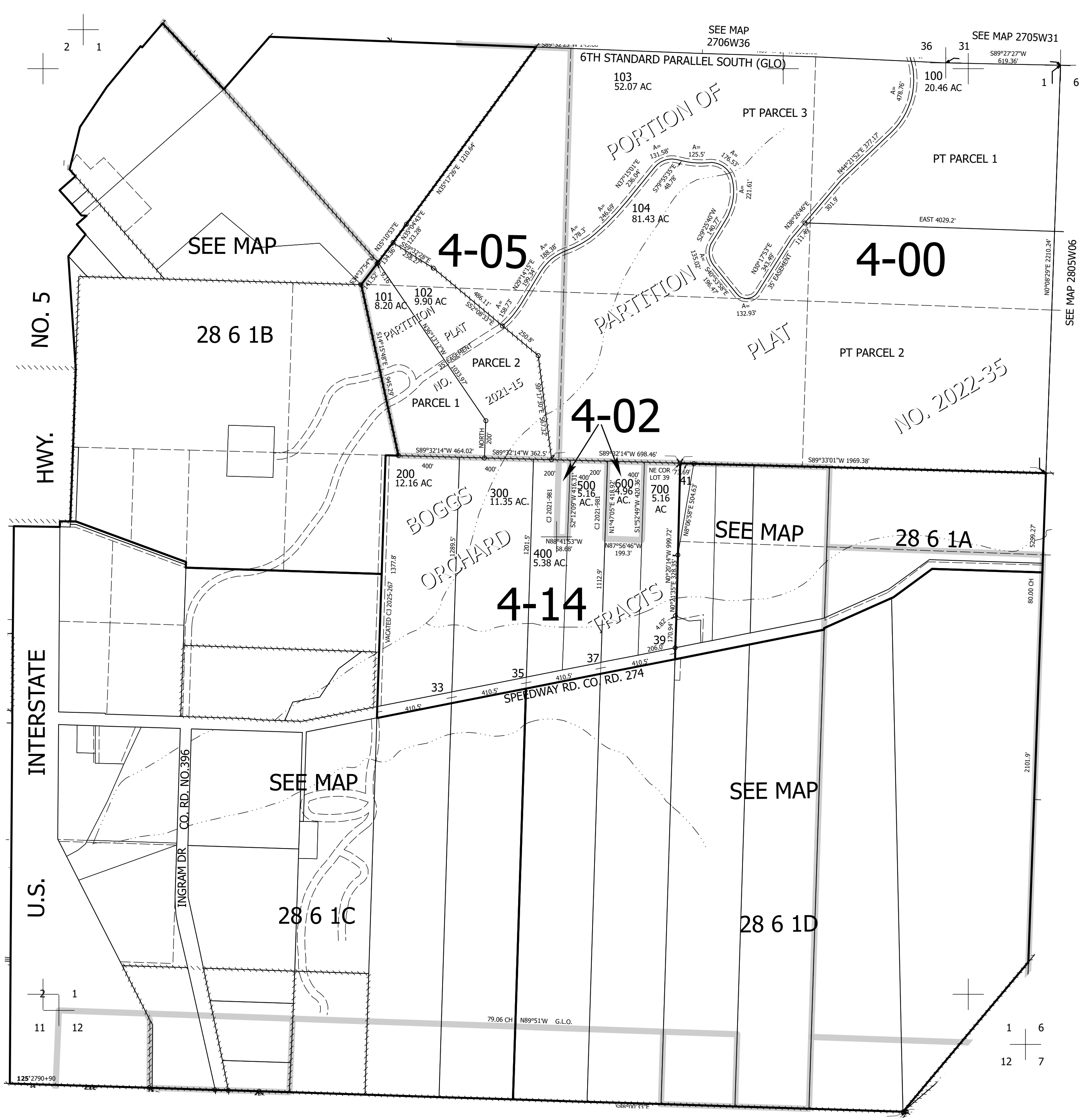
Upper Left:
123°22'13"W 43°10'20"N
4155748E 561787N ft

SEC.01 T.28S. R.06W. W.M.
DOUGLAS COUNTY
1" = 400'

Date Exported 2025-03-13

CANCELLED NOS:
701

35 36



1 6
12 7

125°27'90+90

Lower Right:
123°20'24"W 43°9'14"N
4163597E 554831N ft