

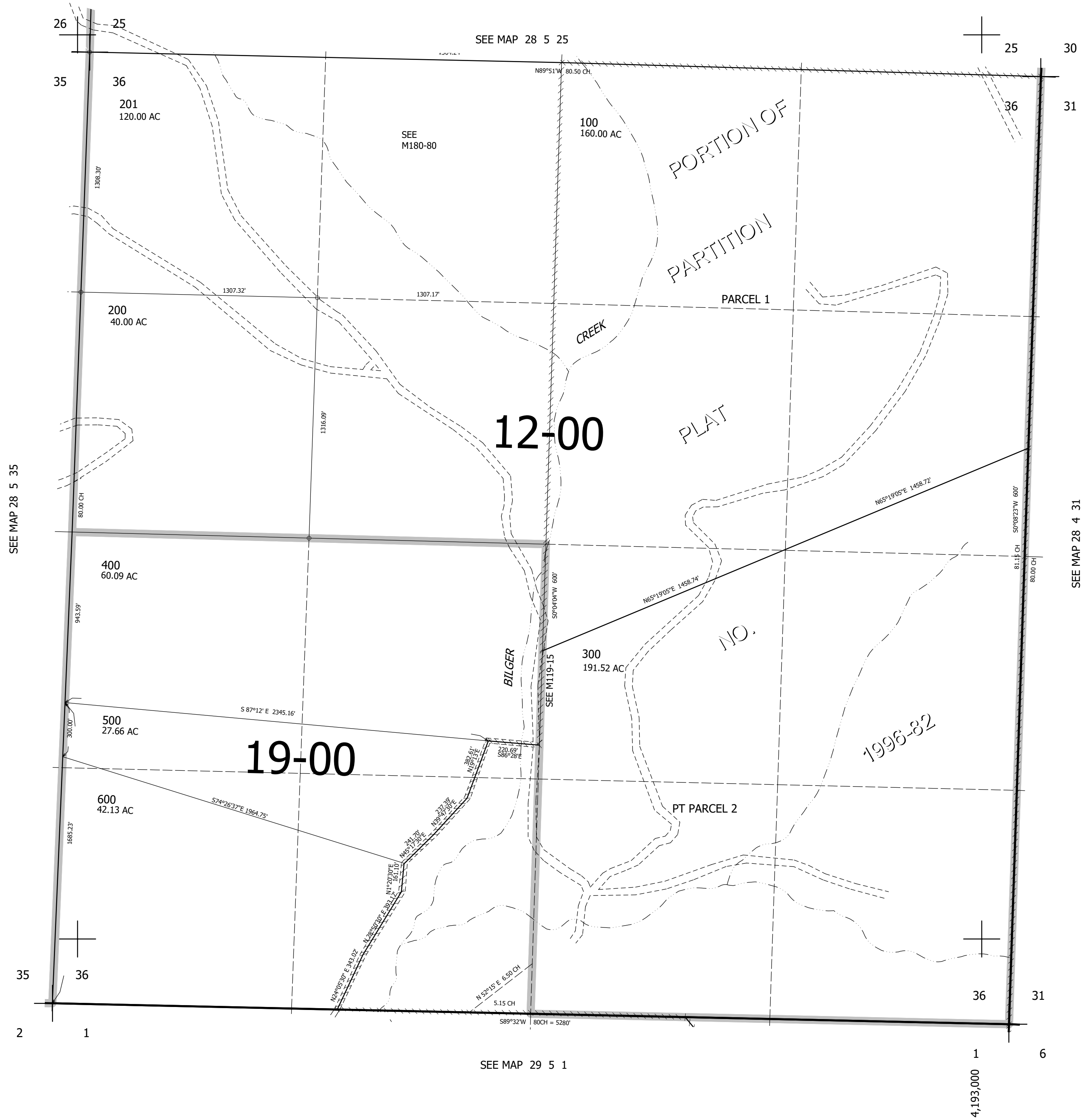
THIS MAP WAS PREPARED FOR ASSESSMENT PURPOSE ONLY.

SEC.36 T.28S. R.5W. W.M.
DOUGLAS COUNTY

REVISED ON
7-5-16

28 5 36

1" = 400'



CANCELLED NO'S
700 101 301

529,000

28 5 36

1
4,193,000
6