

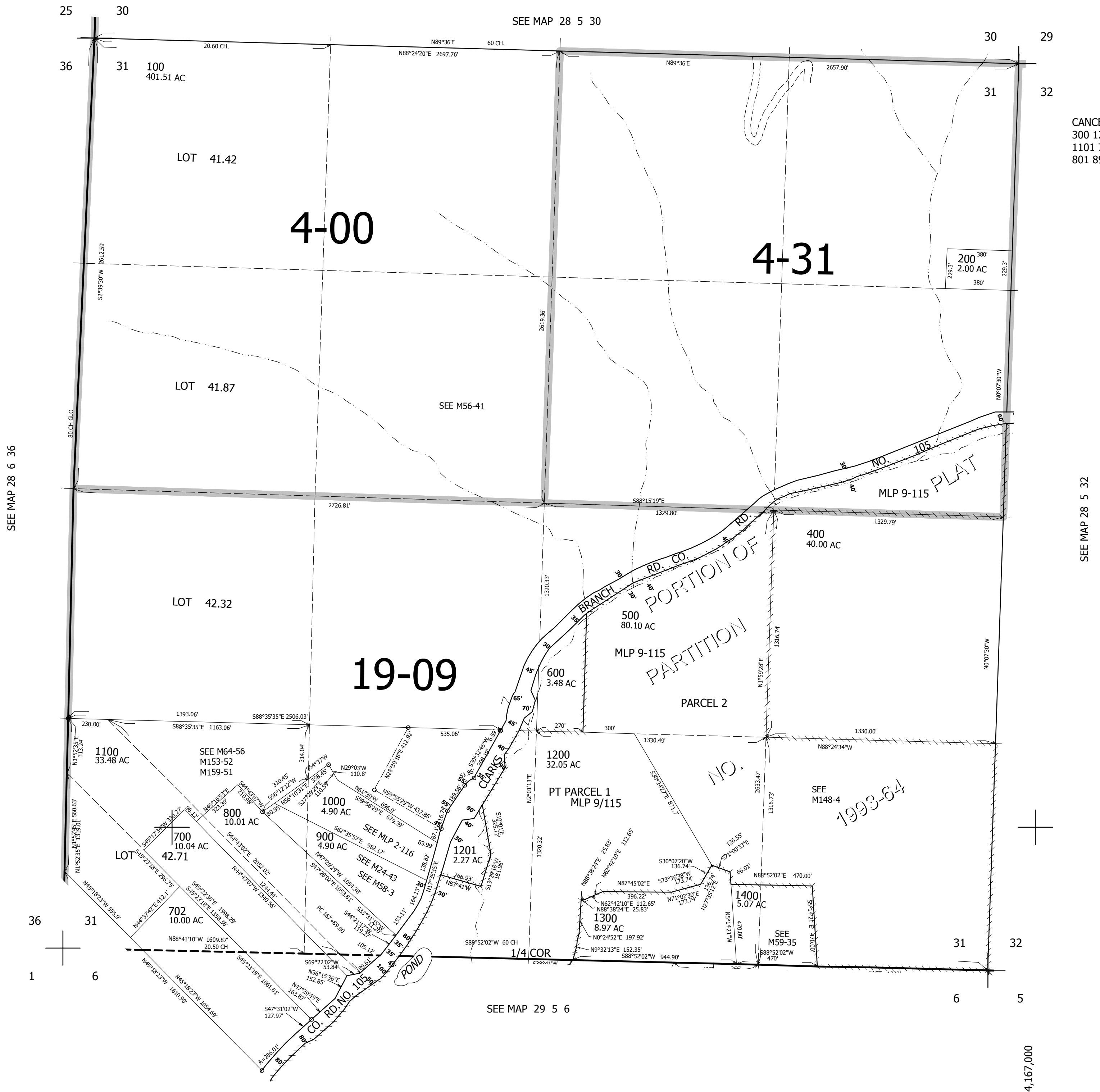
THIS MAP WAS PREPARED FOR ASSESSMENT PURPOSE ONLY.

SEC.31 T.28S. R.5W. W.M. DOUGLAS COUNTY

1" = 400'

REVISED ON 6-6-19

28 5 31



CANCELLED NO'S  
300 1202 701  
1101 703 704  
801 899

530,000

4,167,000

28 5 31