

THIS MAP WAS PREPARED FOR ASSESSMENT PURPOSE ONLY.

SEC.26 T.28S. R.5W. W.M.
DOUGLAS COUNTY

REVISED ON
1-13-22

28 5 26

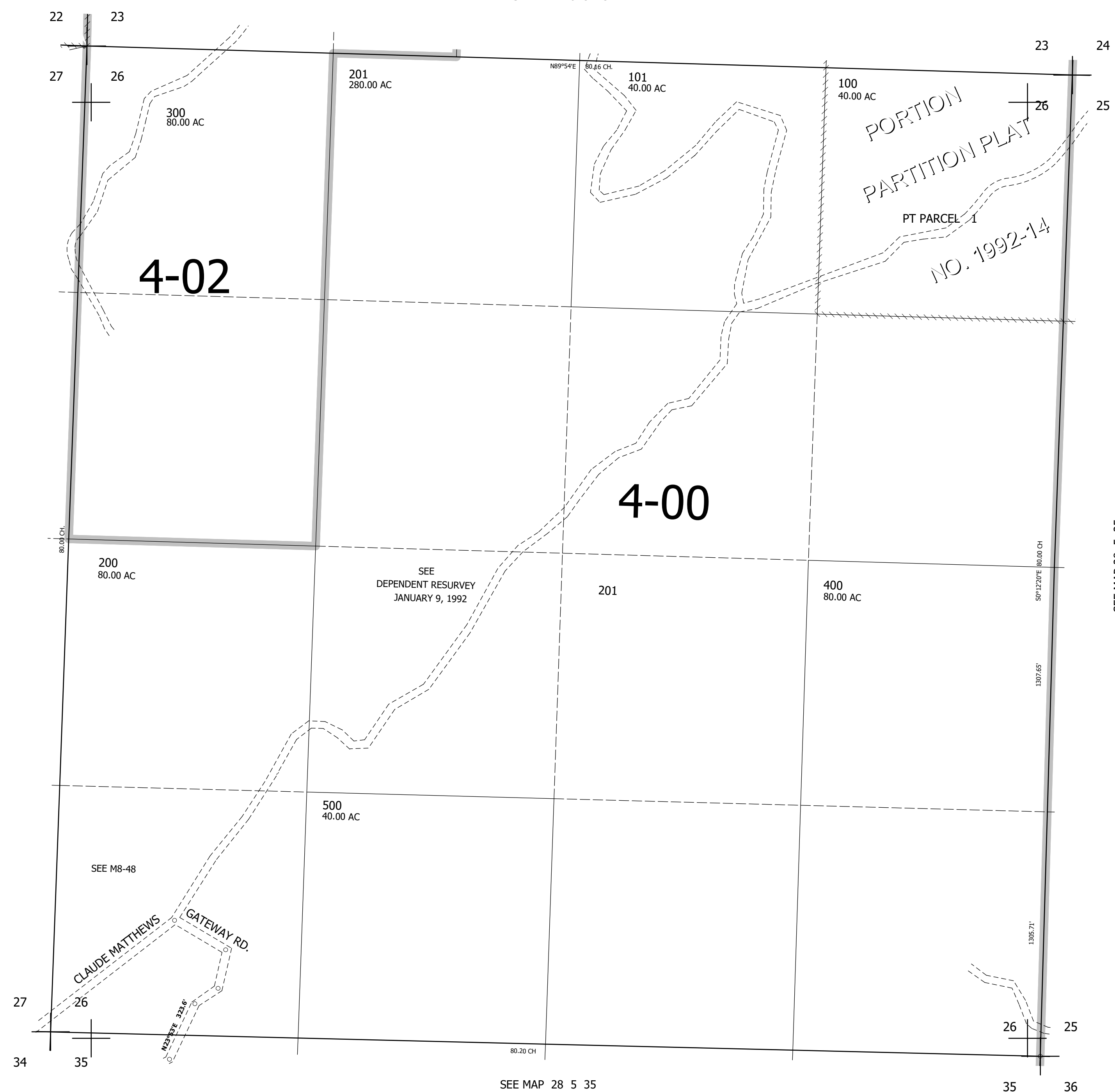
1" = 400'

CANCELLED NO'S

SEE MAP 28 5 23

SEE MAP 28 5 27

SEE MAP 28 5 25



534,000

SEE MAP 28 5 35

4,188,000

28 5 26