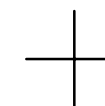
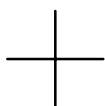


THIS MAP WAS PREPARED FOR ASSESSMENT PURPOSE ONLY.

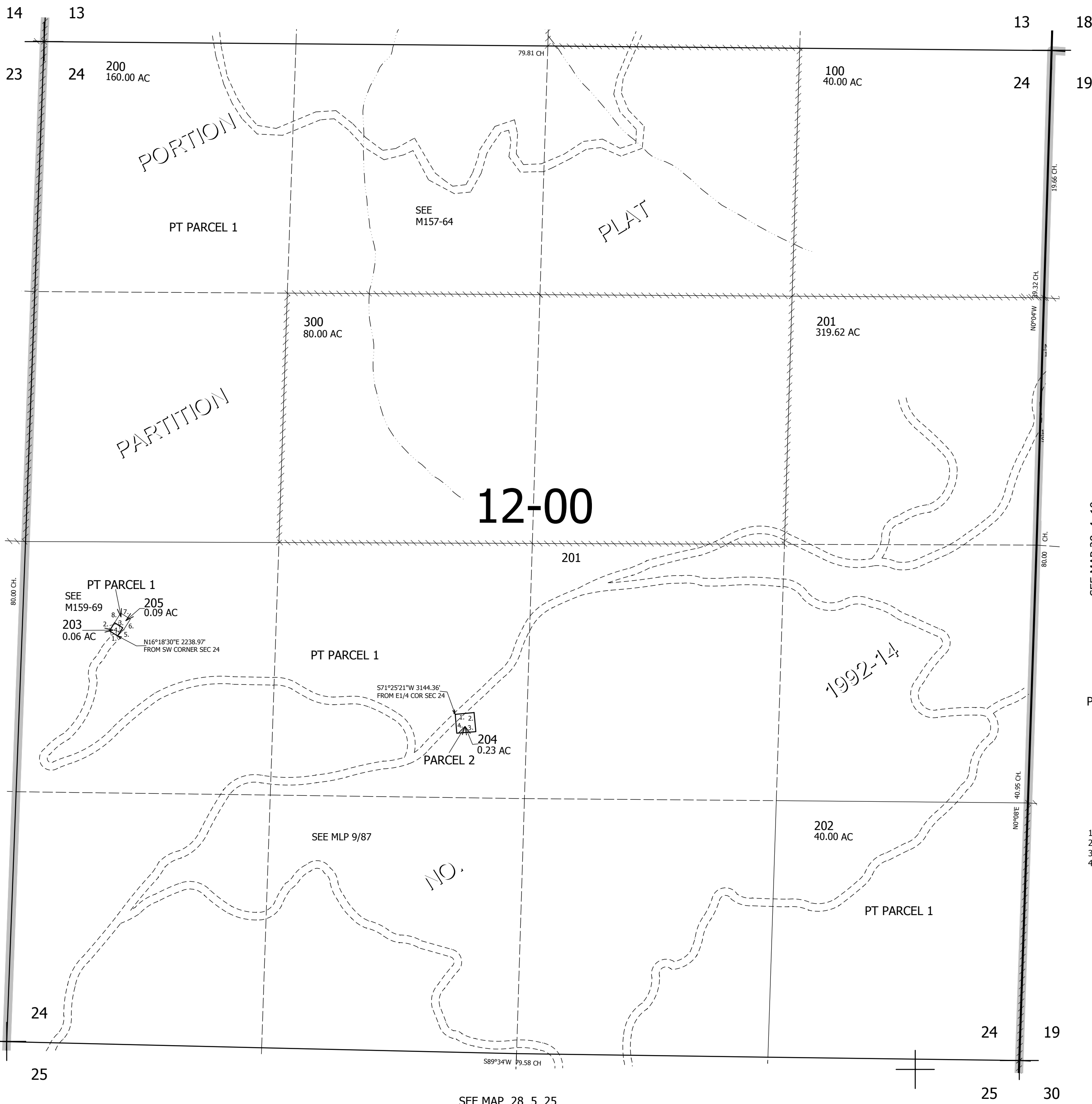
SEC.24 T.28S. R.5W. W.M.
DOUGLAS COUNTY
1" = 400'

REVISED ON
11-7-13

28 5 24



SEE MAP 28 5 13



CANCELLED NO'S
100M1 300M1 203A1

SEE MAP 28 4 19

- PARCELS 203 & 205
1. N56°45'W 50'
 2. N33°15'E 50'
 3. S56°45'E 50'
 4. S33°15'W 50'
 5. S44°33'36"W 50.99'
 6. S33°15'W 50'
 7. S56°45'W 50'
 8. N33°15'E 50'

- PARCEL 204
1. N83°10'42"E 99.97'
 2. S6°47'01"E 99.93'
 3. S83°14'04"W 100'
 4. S6°45'56"E 99.84'

SEE MAP 28 5 23

SEE MAP 28 5 25

539,000

4,193,000

28 5 24