

THIS MAP WAS PREPARED FOR ASSESSMENT PURPOSE ONLY.

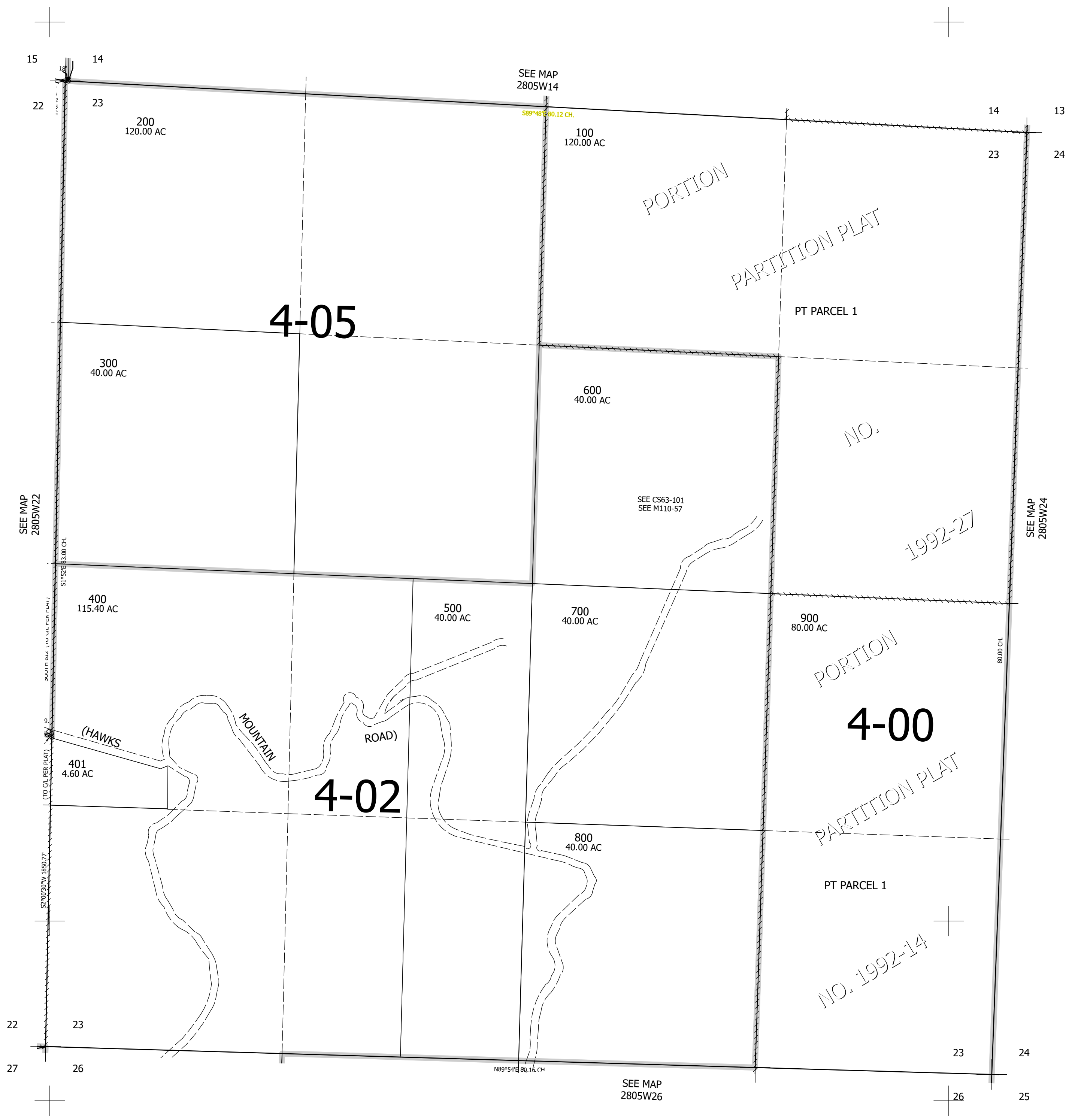
Upper Left:  
123°16'15"W 43°7'47"N  
4181782E 545429N ft

SEC.23 T.28S. R.05W. W.M.  
DOUGLAS COUNTY  
1" = 400'

Date Exported 2023-06-13

280523

CANCELLED NOS:



280523

Lower Right:  
123°14'26"W 43°6'41"N  
4189632E 538474N ft