

THIS MAP WAS PREPARED FOR ASSESSMENT PURPOSE ONLY.

Upper Left:
123°17'29"W 43°7'47"N
4176265E 545576N ft

SEC.22 T.28S. R.05W. W.M.
DOUGLAS COUNTY
1" = 400'

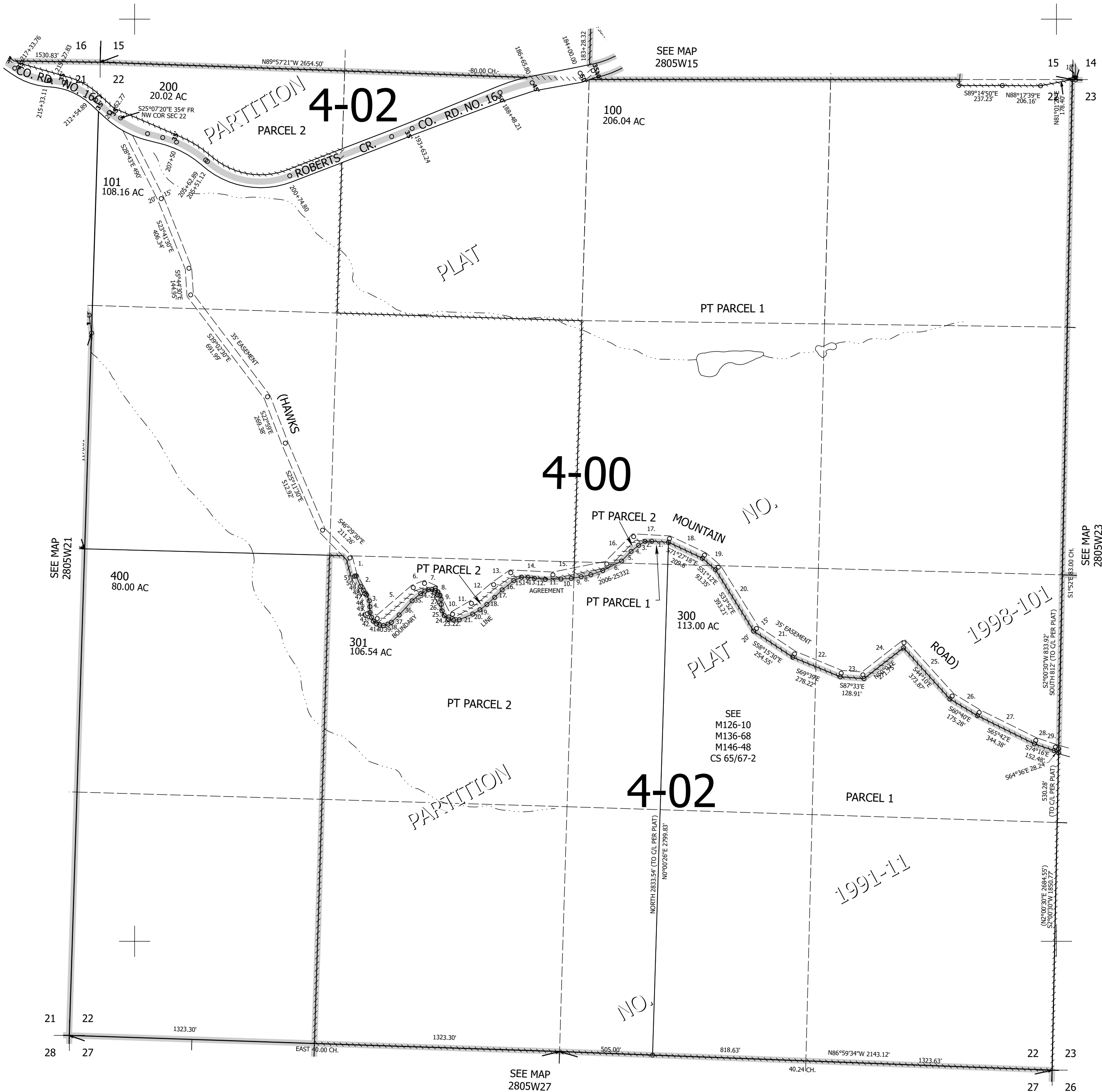
Date Exported 2026-03-31

280522

CANCELLED NOS:
102 103 104 302 303

- BLA 2006-25332
P.O.B. BEARS N86°59'34"W
2143.12' & N0°00'26"E 2799.83'
FROM SE COR SEC 22
1. N87°41'46"W 90.85'
 2. S87°12'31"W 36.85'
 3. S56°51'02"W 40.47'
 4. S49°38'52"W 52.3'
 5. S43°34'07"W 36.87'
 6. S42°56'45"W 36.72'
 7. S61°42'24"W 114.89'
 8. S69°12'53"W 68.51'
 9. S77°09'42"W 53.52'
 10. S79°30'52"W 54.42'
 11. S84°48'56"W 55.75'
 12. S87°29'04"W 85.31'
 13. N86°28'W 58.41'
 14. N82°07'23"W 36.11'
 15. S88°43'43"W 34.75'
 16. S65°36'47"W 45.74'
 17. S49°55'16"W 80.45'
 18. S43°30'20"W 57.38'
 19. S46°28'41"W 57.06'
 20. S50°38'29"W 47.5'
 21. S57°47'32"W 45.85'
 22. S65°46'35"W 79.03'
 23. S84°55'20"W 30.93'
 24. N80°18'11"W 28.59'
 25. N50°42'06"W 30.56'
 26. N25°18'46"W 26.85'
 27. N8°57'25"W 35.66'
 28. N3°49'58"W 26.72'
 29. N16°20'28"W 23.52'
 30. N33°49'30"W 20.75'
 31. N56°14'52"W 16.29'
 32. N77°38'29"W 18.64'
 33. S85°07'38"W 21.13'
 34. S66°42'57"W 19.93'
 35. S56°58'59"W 26.34'
 36. S48°34'53"W 60.52'
 37. S41°03'26"W 103.9'
 38. S45°16'34"W 58.26'
 39. S59°44'29"W 21.2'
 40. S71°31'41"W 25.51'
 41. N83°32'51"W 20.81'
 42. N71°03'50"W 18.21'
 43. N51°13'01"W 22.25'
 44. N26°59'18"W 23.65'
 45. N18°23'38"W 27.38'
 46. N2°48'45"W 31.15'
 47. N7°20'30"W 32.15'
 48. N26°16'38"W 35.11'
 49. N35°49'52"W 29.48'
 50. N38°06'27"W 26.98'
 51. N23°29'01"W 61.53'

- C/L 35' EASEMENT (HAWKS MOUNTAIN ROAD) PER PP 1991-11
1. S16°35'30"E 102.56'
 2. S35°30'30"E 109.98'
 3. S9°13'30"E 109.93'
 4. S65°54'30"E 59.27'
 5. N47°24'30"E 257.25'
 6. N67°24'E 65.21'
 7. S67°46'E 63.9'
 8. S22°02'E 36.13'
 9. S28°54'E 136.18'
 10. N52°01'E 24.5'
 11. N58°05'E 118.22'
 12. N47°55'E 157.42'
 13. N53°11'E 113.26'
 14. S89°09'E 228.7'
 15. N76°37'E 298.22'
 16. N42°30'30"E 207.76'
 17. S88°47'30"E 194.23'
 18. S66°47'E 210'
 19. S51°12'E 99.14'
 20. S33°52'E 391.94'
 21. S58°15'30"E 248.23'
 22. S69°39'E 273.8'
 23. S87°33'E 118'
 24. N50°03'E 282.57'
 25. S44°10'E 389.55'
 26. S60°40'E 171.5'
 27. S65°42'E 342'
 28. S74°16'E 152.67'
 29. S64°36'E 20'



280522

Lower Right:
123°15'40"W 43°6'40"N
4184114E 538620N ft