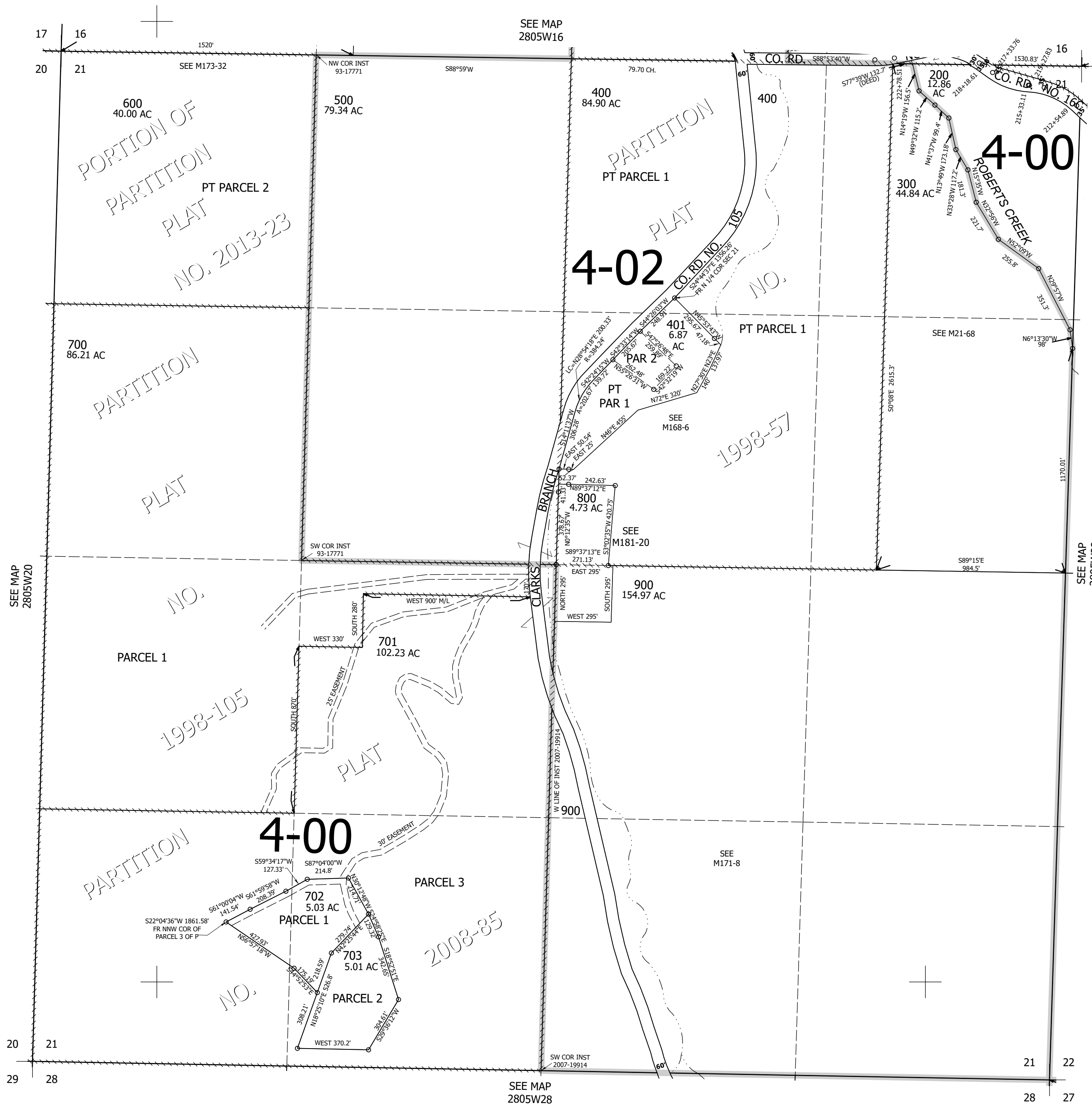


THIS MAP WAS PREPARED FOR ASSESSMENT PURPOSE ONLY.

Upper Left:
123°18'38"W 43°7'46"N
4171164E 545704N ft

SEC.21 T.28S. R.05W. W.M.
DOUGLAS COUNTY
1" = 400'

CANCELLED NOS:
201 500M1 700M1
100 402 403
404



Lower Right:
123°16'49"W 43°6'40"N
4179013E 538749N ft