

THIS MAP WAS PREPARED FOR ASSESSMENT PURPOSE ONLY.

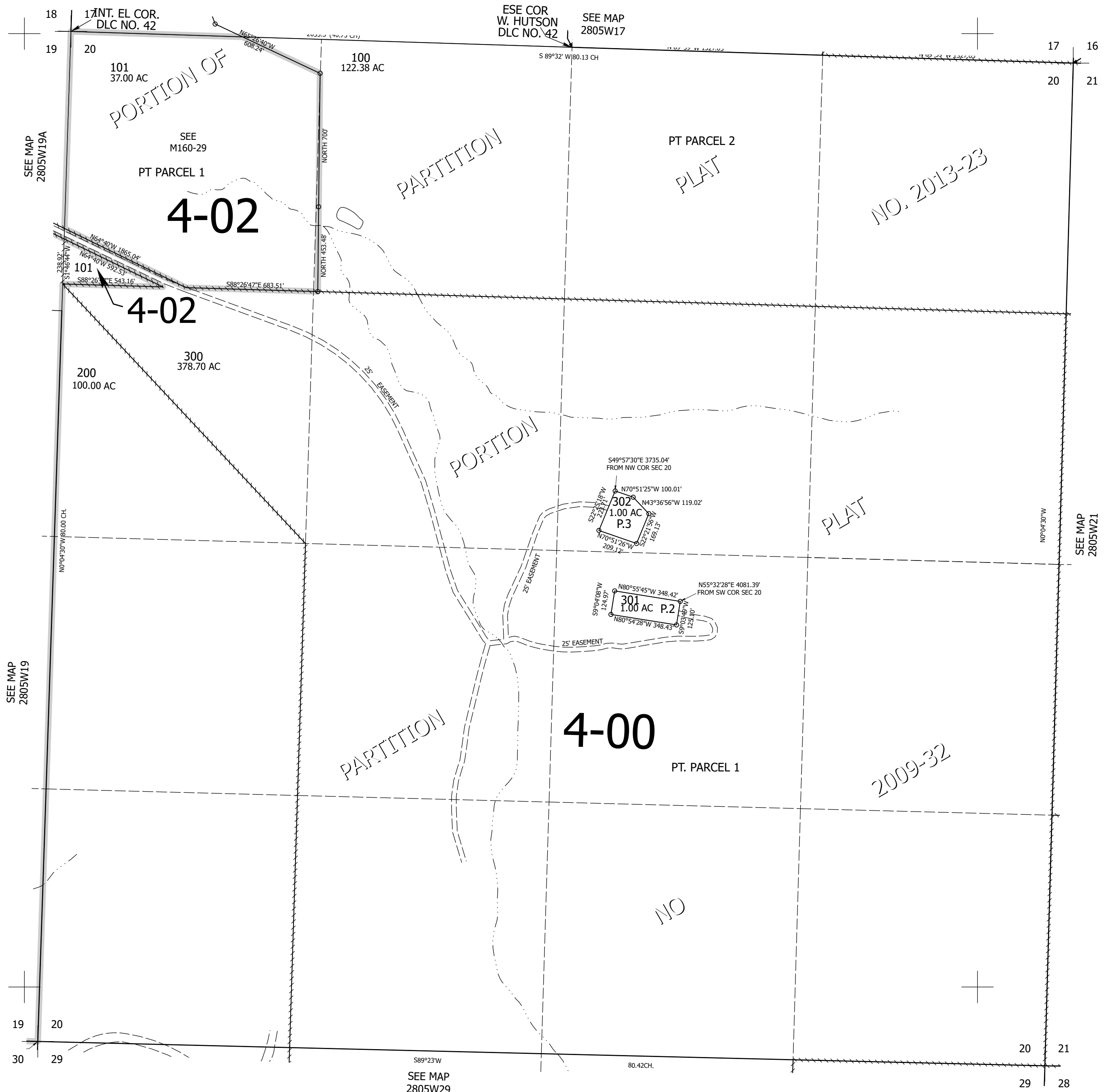
Upper Left:
123°19'50"W 43°7'46"N
4165852E 545842N ft

SEC.20 T.28S. R.05W. W.M.
DOUGLAS COUNTY
1" = 400'

Date Exported 2026-03-26

280520

CANCELLED NOS:
102



280520

Lower Right:
123°18'1"W 43°6'40"N
4173701E 538887N ft