

THIS MAP WAS PREPARED FOR ASSESSMENT PURPOSE ONLY.

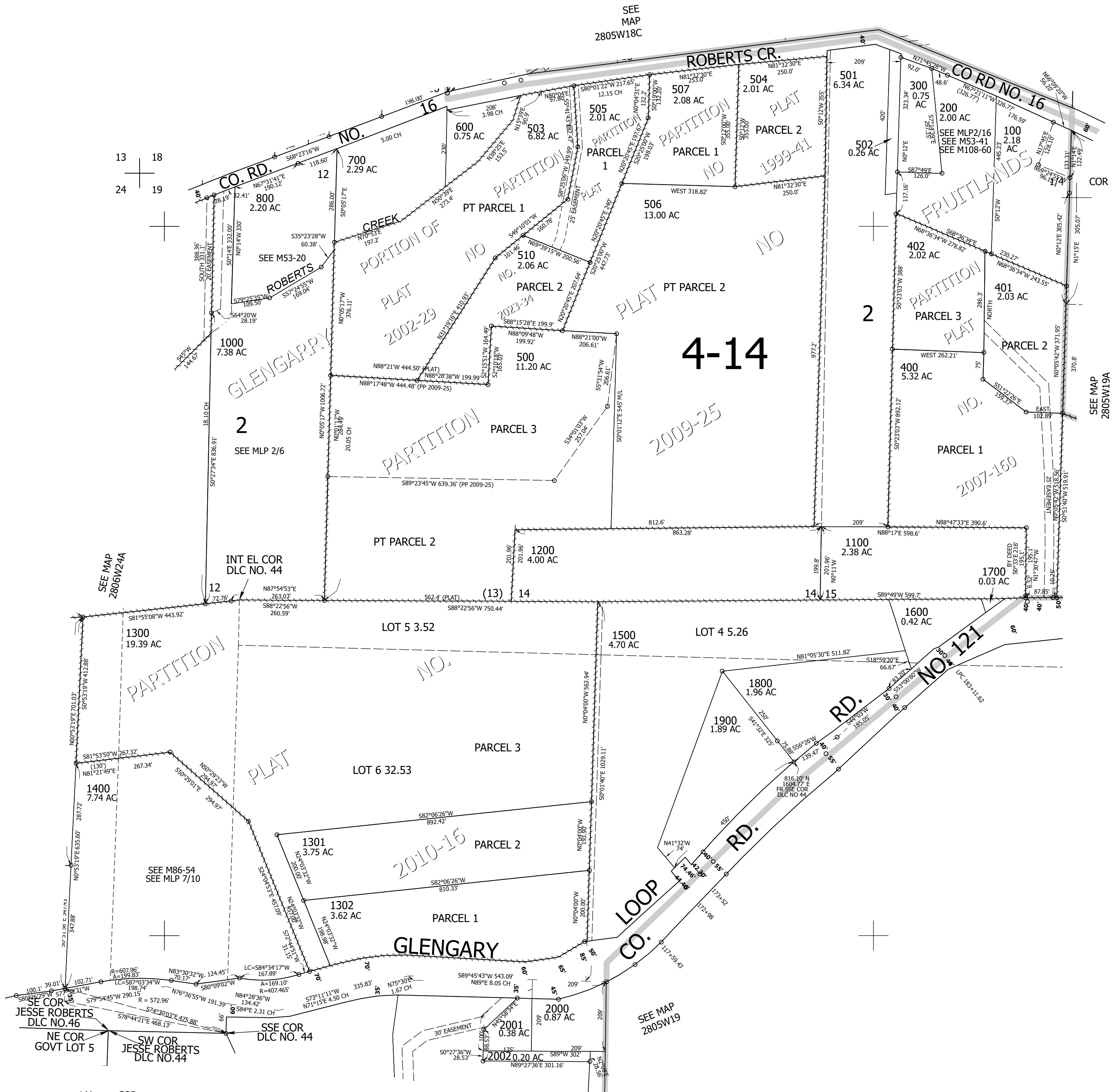
Upper Left:  
123°20'53"W 43°7'44"N  
4161153E 545792N ft

NW1/4 SEC.19 T.28S. R.05W. W.M.  
DOUGLAS COUNTY  
1" = 200'

Date Exported 2025-02-05

280519B

CANCELLED NOS:  
201 900 508  
509



1/4 COR

CEN SEC

280519B

Lower Right:  
123°19'59"W 43°7'11"N  
4165078E 542314N ft